

QualityWindow

The continuous improvement software



QW DataHub 6.1.72

Release Notes

April 13, 2026

Table of Contents

Overview QW DataHub Release Notes.....	3
Previous Builds	5
Release 6.1.58 - May 01 st , 2025	5
Resolved Issues	5
New Features and Improvements	6
Resolved Issues	6
Release 6.1.55 - April 16 th , 2025.....	6
New Features and Improvements	6
Resolved Issues	7

Overview QW DataHub 6.1.72 Release

This release introduces a major architectural update to DataHub along with a new client experience and improved deployment flexibility.

DataHub now runs as a Windows service, improving reliability and removing dependency on user sessions. A new desktop client, QW DataHub Explorer, replaces the previous viewer and provides enhanced visibility into DataHub operations and tag data.

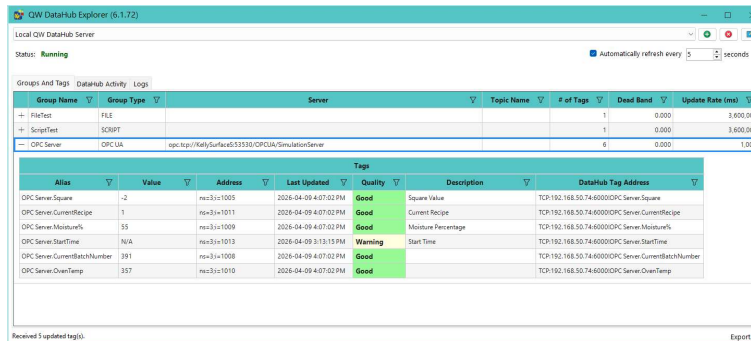
The installer has also been redesigned to support both client-only and full deployments, along with flexible runtime options to better align with different IT environments.

Review our [Admin guide](#) for full details.

New Features and Improvements

QW DataHub Explorer (Client)

A new desktop client has been introduced to monitor and interact with DataHub servers.



Group Name	Group Type	Server	Topic Name	# of Tags	Dead Band	Update Rate (ms)
FileTest	FILE			1	0.000	3,600,000
ScriptTest	SCRIPT			1	0.000	3,600,000
CPC Server	CPC/UA	opc.tcp://KalyiSurface0325580/CPC/UA/SimulationServer		6	0.000	1,000

Alias	Value	Address	Last Updated	Quality	Description	DataHub Tag Address
CPC Server.Square	-2	opc3://1005	2024-04-09 4:07:02 PM	Good	Square Value	TCP-192.168.50.74:60000/CPC Server.Square
CPC Server.CurrentRecipe	1	opc3://1011	2024-04-09 4:07:02 PM	Good	Current Recipe	TCP-192.168.50.74:60000/CPC Server.CurrentRecipe
CPC Server.Moisture%	55	opc3://1009	2024-04-09 4:07:02 PM	Good	Moisture Percentage	TCP-192.168.50.74:60000/CPC Server.Moisture%
CPC Server.StartTime	N/A	opc3://1013	2024-04-09 3:11:15 PM	Warning	Start Time	TCP-192.168.50.74:60000/CPC Server.StartTime
CPC Server.CurrentBatchNumber	391	opc3://1008	2024-04-09 4:07:02 PM	Good		TCP-192.168.50.74:60000/CPC Server.CurrentBatchNumber
CPC Server.OverTemp	337	opc3://1010	2024-04-09 4:07:02 PM	Good		TCP-192.168.50.74:60000/CPC Server.OverTemp

New QW Datahub Explorer Client

QW DataHub Explorer provides a streamlined interface for:

- Connecting to one or more DataHub servers
- Browsing tag groups and inspecting live tag values
- Viewing tag quality, timestamps, and addresses
- Copying tag addresses for use in other applications

The client also introduces:

- DataHub server activity log viewing
- Client-side diagnostic logs
- Auto-refresh with configurable intervals
- Export of tag data to CSV

QW DataHub 6.1.72 - Release Notes

- Support for multiple server connections
- Automatic detection of local DataHub servers
- Command Line Interface (CLI)

QW DataHub Explorer can be installed as a standalone client or included as part of the full DataHub installation.

Updated Installer and Deployment Options

A redesigned installer introduces more flexible deployment models.

Installation Scope Options

- Client Tools Only — install the DataHub Explorer on client devices
- Full Installation — install the DataHub service along with administrative and client tools

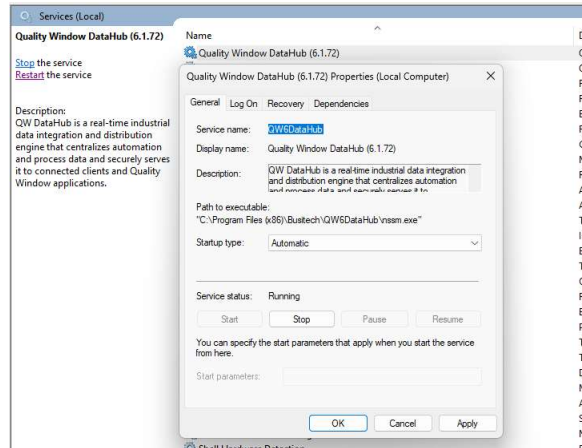
Installer Types

- Framework-Dependent (FD) Installer (Default)
 - Installs required .NET runtime components during setup
 - Uses the system runtime for ongoing operation
 - Receives updates through standard Windows servicing
- Self-Contained (SC) Installer
 - Includes all required runtime components
 - Does not rely on system-installed dependencies
 - Runtime updates are delivered through future DataHub releases

DataHub Runs as a Windows Service

DataHub now operates as a Windows service, improving system reliability and deployment consistency.

QW DataHub 6.1.72 - Release Notes



QW DataHub Service

This change ensures:

- Automatic startup with the system
- Continued operation through user logouts and reboots
- Independence from workstation user sessions

This aligns DataHub with standard server deployment practices and improves stability in production environments.

Previous Builds

6.1.59 - May 7, 2025

Resolved Issues

A critical defect was resolved where QW DataHub failed to retrieve values from additional OPC UA groups beyond the first. Sites using multiple OPC UA groups to interface with distinct data sources or scan rates were affected, as only the first group would successfully transmit tag values to QW DataHub clients.

6.1.58 - May 01st, 2025

Resolved Issues

Multiple OPC UA Groups - Resolved an issue that prevented QW DataHub from retrieving tag values from all configured OPC UA groups. Previously, only the first defined OPC UA group would be processed, leading to data gaps when multiple groups were defined for separate servers, nodes, or

tag sets. QW DataHub now properly handles and collects data from all active OPC UA group definitions.

New Features and Improvements

Improved Error Logging – Application logging has been enhanced for CALC, FILE, and SCRIPT group types, providing clearer diagnostics and making it easier to troubleshoot scripting and data update issues.

New Default Configuration – Fresh installations of QW DataHub now include default group and tag configurations to simplify initial connectivity testing with Quality Window. This includes a fully functional script example. Refer to the QW DataHub Admin Guide for usage details.

Improved Write-Back Handling – Tag values written back to QW DataHub are now immediately reflected in the interface and value cache, eliminating previous delays and improving the real-time feedback experience during testing.

Resolved Issues

CALC Script Issues – Resolved a bug where CALC tags were not functioning correctly when processed through the `Value` script function.

Removed Case Sensitivity – Fixed an issue where incoming tag requests were incorrectly treated as case-sensitive. All tag access is now fully case-insensitive for improved reliability.

6.1.55 - April 16th, 2025

New Features and Improvements

OPC UA Support – QW DataHub now supports OPC UA ([Unified Architecture](#)), enabling secure, modern communication with a wide range of industrial devices and platforms.

New Icons – Refreshed icons help distinguish QW DataHub components within the Quality Window product family.



QW DataHub Icon



QW DataHub Admin Icon

New Installer – A new MSI-based installer improves installation reliability, Windows compatibility, and upgrade path management.

Improved File Log Engine – Logging now uses the NLog framework, making logs compatible with common log viewers and improving long-term supportability.

Modernized Configuration File Storage – Application settings are now stored using current Windows best practices, improving portability and IT compliance.

Improved Error Handling – Errors are now logged more consistently and clearly, leveraging the new logging engine for better troubleshooting.

Service Actions in Interface – Restart, shutdown, and administrative access options are now available directly from the main interface, removing the need to use the system tray.

Buttons for Item Management – The Manage Items dialog now includes explicit Add and Remove buttons to improve usability when editing tag lists.

Resolved Issues

Activity Log Count – Fixed an issue where the Activity Log was not displaying the correct number of entries based on user-defined settings.