

QualityWindow

The continuous improvement software



Quality Window 6.1.400

Release Notes

June 17, 2026

[Table of Contents](#)

Overview Quality Window 6.1.4005

New Features and Improvements5

Resolved Issues6

Previous Builds.....6

2026-04-28 | Quality Window 6.1.3776

 New Features and Improvements (6.1.352).....7

 Major Update: Improved Rules and Alarms Workflow7

 Other Features and Improvements8

 Resolved Issues 6.1.377 10

 Resolved Issues 6.1.376 10

 Resolved Issues 6.1.365 11

 Resolved Issues 6.1.364 11

 Resolved Issues 6.1.358 11

 Resolved Issues 6.1.357 12

 Resolved Issues 6.1.352 12

2025-10-28 | Build 6.1.271 & 6.1.273 13

 New Features and Improvements 13

 Report Document Improvements..... 13

 Resolved Issues 17

 Resolved Issues in 6.1.273 17

 New Features and Improvements 18

 Resolved Issues 19

2025-07-31 | Build 6.1.254..... 19

 New Features and Improvements 19

 Report Documents (Certificate of Analysis) Improvements 21

 Resolved Issues 22

2025-06-10 | Build 6.1.234..... 23

 New Features and Improvements 23

 Popup Improvements 24

 Security and Traceability Improvements 24

 Other QW Administrator Improvements 25

 QW Workstation Improvements 26

Quality Window 6.1.400 - Release Notes

Resolved Issues	27
Previous Builds	28
2025-04-07 Build 6.1.208	28
New Features and Improvements	28
Resolved Issues	28
Previous Builds	29
2025-02-10 Build 6.1.174	29
Resolved Issues	29
2025-02-04 Build 6.1.172 New Features and Improvements	29
Resolved Issues	31
2025-01-14 Build 6.1.161	32
New Features and Improvements	32
Resolved Issues	32
2025-01-09 Build 6.1.160	33
New Features and Improvements	33
Resolved Issues	34
2024-12-04 Build 6.1.144	34
Resolved Issues	34
2024-11-23 Build 6.1.142	35
New Features and Improvements	35
Resolved Issues	35
2024-10-28 Build 6.1.120	36
New Features and Improvements	36
Resolved Issues	37
Resolved Issues	38
Fixes for Scripts	38
2024-08-02 Build 6.1.83	39
Resolved Issues	39
Fixes for Views	39
QW Administrator Fixes	39
2024-06-27 Build 6.1.78	39
New Features and Improvements	39
Improved Integration with QW License Server	39

Quality Window 6.1.400 - Release Notes

QW Admin40

QW Workstation.....41

Resolved Issues42

 QW Workstation.....42

2024-05-14 | Build 6.1.4743

 Introducing Seamless Quality Window 5 support43

 What does this mean for existing Quality Window 6 customers?43

 New Features43

 Email Notifications for Rule Violations43

 QW Workstation Improvements44

 QW Admin45

 Resolved Issues50

 QW Workstation.....50

 QW Admin52

 QW Installer Fixes53

2024-01-30 | Build 6.00.73553

2024-01-08 | Build 6.00.73456

Overview Quality Window 6.1.400

This release adds new security controls for protected field overrides and alarm acknowledgements, along with improved audit visibility through the new Security Audit Log Viewer and added transaction audit context. It also includes updates to the Grid View editor, license registration access, external data loading, alarm handling, formatting consistency, and other reliability improvements across Quality Window.

New Features and Improvements

Protected Field Override Capability – Quality Window now supports authorized override of protected fields. When the **Allow authorized users to override Protected Fields** option is enabled, users with the **Allow Override Protected Field** permission can edit a protected field by entering authorized credentials. Protected field overrides are recorded in the transaction audit log and security log, including the user who performed the override. See the [Can Authorized Users Override Protected Variables?](#) article for setup details.

Alarm Acknowledgement Permissions – Quality Window now supports permission-based alarm acknowledgements. Administrators can require alarm acknowledgements to be completed only by users with the **Allow Alarm Acknowledgement** permission. If acknowledgement is required and the current user does not have permission, Quality Window prompts for credentials from an authorized user. This allows the alarm to be acknowledged without requiring the current workstation user to log out and back in. See the [Can Alarm Acknowledgements Be Restricted to Authorized Users?](#) article for setup details.

Security Audit Log Viewer – Security administrators can now review security-related events in Quality Window, including user account changes and user security events. See the [Security Audit Log section of the Security Guide](#) for more information.

Deleting the Currently Logged-In User Automatically Logs Out the User – The Security Administrator console now automatically logs out a user if they delete their own account. A warning is shown before the action is completed. This prevents users from continuing to work in the console without valid credentials.

Transaction Audit Trail Now Contains View Name – The transaction audit trail now records the loaded view name when a transaction is completed. This provides additional context for changes recorded in the audit log.

Improved Grid View Editor – In QW Admin, the Grid View editor now more clearly identifies read-only cells that are not relevant to the variable in that row by displaying them with a grey background. Values that do not apply to the variable, such as rule values for text variables, are no longer shown. This improves readability and makes the Grid View editor easier to review.

Resolved Issues

Prevent Scroll Wheel from Changing Security Values – An issue was resolved where values in the User property grid in the Security Administrator console could change when the scroll wheel was used in some cases. This could result in unnoticed value changes.

Popup Editor Accepting Newline Characters in Data – An issue was resolved where pasting newline characters into the Popup Editor could cause QW Workstation to crash.

Apps Not Loading All Data When Accessing External Data – In some cases, QW Applications that load data from an external data source on open did not load all data when opened again in the same QW Workstation session. This issue has been resolved.

Spaces Allowed in Security User Details – An issue was resolved where the Full Name, User Name, and Logon Domain fields could store leading or trailing spaces. This could make it difficult for users to log in. Leading and trailing spaces are now removed from these fields.

Audit Log Entries Using Mixed Date and Time Formats – Prior to this version, transaction audit log entries used the date and time format from the computer executing the transaction. This could cause inconsistencies across different Windows configurations. Audit log date and time values now use the QWQ standard format.

Limit Decimal Format Not Consistent – Some areas of the product displayed spec limits with inconsistent decimal places. Spec limits now display consistently with one more decimal place than the variable format in reports, variable details, and the Add screen.

Grid View Selection Lost When Right-Clicking Cells – An issue was resolved where a multi-cell selection in the Grid View editor could be lost if the user right-clicked a cell other than the last highlighted cell.

License Registration Inaccessible – An issue was resolved where the license management screen could become stuck behind a splash screen after a temporary license expired, making it difficult to access.

Irrelevant Alarm Re-Trigger on Edit – An issue was resolved where alarms could re-trigger after editing the last record, even when the value that triggered the alarm had not changed.

QWSDB Caching Causing Performance Issues – An issue was resolved where overly aggressive QWSDB operational database caching could impact performance in degraded network conditions.

Previous Builds

2026-04-28 | Quality Window 6.1.377

- **Major release:** 6.1.352 (2026-02-17)

Quality Window 6.1.400 - Release Notes

- **Subsequent builds:** 6.1.357(2026-02-25), 6.1.358(2026-03-05), 6.1.364(2026-03-13), 6.1.365(2026-03-18), 6.1.376(2026-04-24)
- **Current build:** 6.1.377

Version 6.1.352 introduced a major update focused on strengthening Rules and Alarms, improving QW Workstation performance, and refining overall system behavior.

Subsequent builds deliver fixes and improvements across the product based on ongoing use and feedback.

Installing 6.1.377 provides both the original feature updates and all subsequent fixes in a single, stable build.

New Features and Improvements (6.1.352)

Major Update: Improved Rules and Alarms Workflow

This release delivers a major improvement to how Rules and Alarms work in Quality Window, making alarms clearer, more actionable, and easier to manage for both operators and administrators.

Operators now receive immediate and unambiguous feedback when a rule violation occurs. When configured, alarms can block additional data entry until the issue is acknowledged and a comment or corrective action is provided, ensuring corrective actions are captured at the time the condition occurs. If the last record is edited and triggers a rule, the same acknowledgement requirement applies. Visual indicators clearly distinguish between informational alarms and alarms that require action, reducing confusion and missed responses.

The screenshot displays the Quality Window 6.1.340 interface. At the top, a red banner indicates "There are 5 active alarms, 1 requires your acknowledgment. Add/Edit is disabled. (Click to review)". Below this, four charts are visible: "Batch Viscosity", "Weight Lane 3 (gm)", "Conveyor Speed (fpm)", and "Oven Temp. (F)". The "Batch Viscosity" chart shows a red alarm icon and a tooltip: "USL_Notification The last point is gr... [955]". The "Weight Lane 3 (gm)" chart shows a red alarm icon and a tooltip: "LSL-Notify The last point is less than... [2.0]". The "Conveyor Speed (fpm)" chart shows a green alarm icon and a tooltip: "UCL The last point is greater than th... [215]". The "Oven Temp. (F)" chart shows a yellow alarm icon and a tooltip: "LCL The last point is less than the L... [373]".

The main panel displays details for the "Batch Viscosity" alarm:

- Rule:** USL_Notification - The last point is greater than the Upper Specification Limit. Requires Acknowledgment, Sends Email.
- Triggered at:** 2026-02-10 15:07:31 by 'kelly' on 'KELLYSURFACES'
- Value:** 955
- Record Time:** 2026-02-10 15:06:01
- Acknowledge Time:** 2026-02-10 15:08:55

Below the details is a table of recent actions:

Action Time	Logsheet Record	Value	Rule	Action	Comment
2026-02-10 15:08:55	2026-02-10 15:06:01	955	USL_Notification	Acknowledged	Contaminated
2026-02-10 15:08:03	2026-02-10 15:06:01	955	USL_Notification	NotificationFailure	Error sending notification email. Invalid TO email address. 'kelly.gault@busitec
2026-02-10 15:08:02	2026-02-10 15:06:01	955	USL_Notification	NotificationFailure	Error sending notification email. Invalid TO email address. 'kelly.gault@busitec
2026-02-10 15:07:32	2026-02-10 15:06:01	955	USL_Notification	Created	Record added by user.
2026-02-10 15:07:30	2026-02-05 09:47:42	955	USL_Notification	Cleared	Alarm automatically cleared. Reason: Record added by user.
2026-02-06 10:37:34	2026-02-05 09:47:42	955	USL_Notification	Notified	Acknowledged rule violation
2026-02-06 10:37:30	2026-02-05 09:47:42	955	USL_Notification	Acknowledged	Changed the widget
2026-02-05 09:48:48	2026-02-05 09:47:42	955	USL_Notification	Notified	New rule violation
2026-02-05 09:48:25	2026-02-05 09:47:42	955	USL_Notification	Created	Record added by user.
2026-01-26 17:42:48	2026-01-20 18:28:22	1234	UCL	Cleared	Alarm automatically cleared. Reason: Record copied by user.
2026-01-20 18:28:33	2026-01-20 18:28:22	1234	UCL	Created	Record added by user.
2026-01-20 18:28:32	2026-01-20 18:07:33	1234	UCL	Cleared	Alarm automatically cleared. Reason: Record added by user.
2026-01-20 18:07:51	2026-01-20 18:07:33	1234	UCL	Created	Record added by user.

For administrators, alarm behavior is now more predictable and configurable. Acknowledgement requirements and email notifications can be enabled independently per rule, allowing teams to

determine which conditions simply notify and which enforce workflow. Email notifications are triggered per event when configured. New tokens are available for acknowledgement events. Alarm history is preserved and available through reporting to support audits and investigations.

Overall, this update is designed to move alarms from background notification to an enforceable part of the operational workflow.

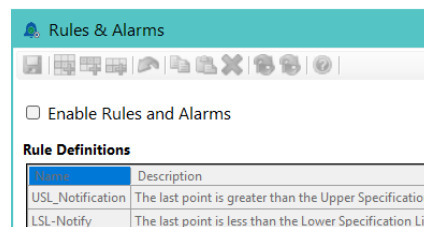
For setup details and configuration guidance, see the updated [Rules and Alarms – Administration Guide](#).

Other Features and Improvements

QW Workstation Load Performance Improvements – Performance has been improved when opening QW Workstation, QW applications, and Views in QW Workstation.

QW Workstation Progress indicator Improvements – As part of the performance updates, the QW Progress indicator has been optimized to appear more consistently during long operations and to improve visibility when opening QW applications.

Ability to Disable Alarms – Rules and Alarms can now be disabled for the entire deployment in QW Admin for customers that do not use this functionality. Disabling Rules and Alarms also disables the related enforcement behaviors introduced in this release.



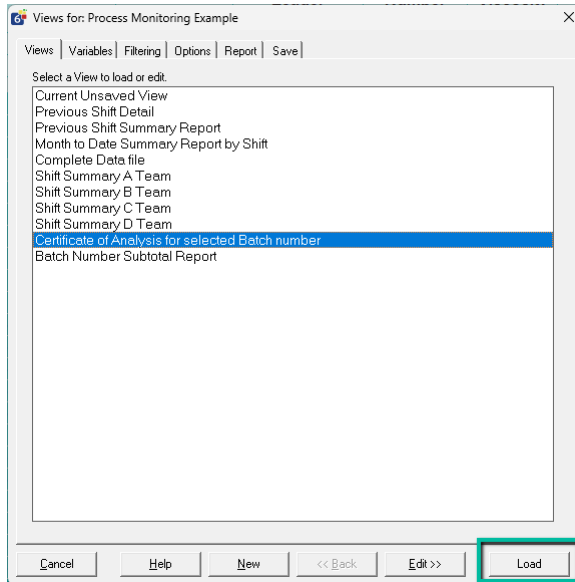
Example of Rule and Alarms being Disabled

Temporary views restrict record creation – When a View or filter has unsaved changes, Add, Insert, and Copy actions are disabled. A notification banner and status bar entry explain that the View must be reloaded to re-enable these actions, with guidance to save the View first if needed. This behavior is a direct consequence of the new alarm enforcement capability and is disabled if Rules and Alarms are disabled at the deployment level.

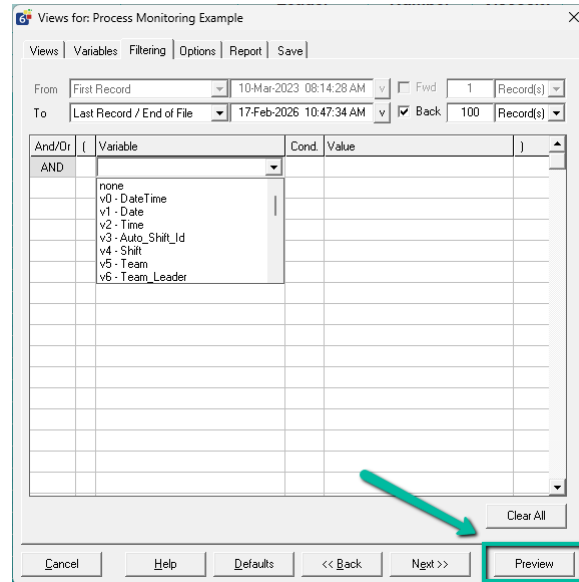
Temporary View or Filter detected - Add, Insert, and Copy are disabled. Reload required (save the view first if needed, click for help)

Updates to View Manager – The View Manager has been updated to improve clarity of operation. The Run button now displays either “Load” or “Preview” to clearly indicate the action being performed based on the current state of the View. “Load” appears when an existing View is selected, while “Preview” appears when filters or configuration have been modified.

Quality Window 6.1.400 - Release Notes

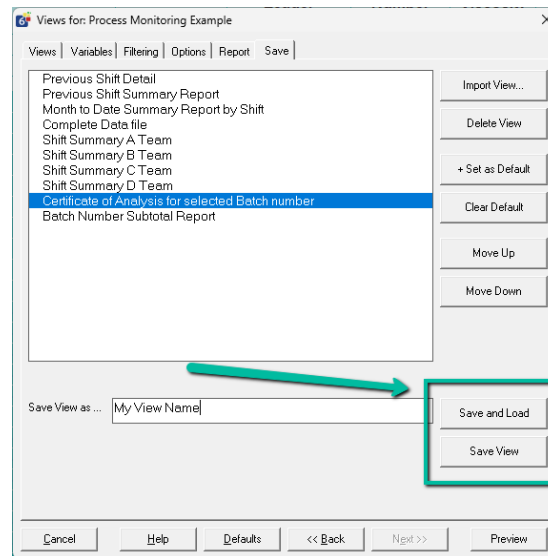


Example of Load Button when Existing View selected



Example of Preview Button when changing view/filters

Save and Load button in View Manager – To improve usability when saving and loading Views, a new Save and Load button has been added to the Save tab, allowing users to save the currently configured View and load it in a single action. The existing Save button has been preserved to allow saving without closing the View Manager, supporting the creation of multiple Views with different settings.



New background worker – This release introduces a new core component of the Quality Window platform called QW.AgentService. QW.AgentService starts automatically when QW starts and runs in the background to offload certain system tasks from the main application.

Improved Security Users Import/Export – The Import and Export file format has been updated to include a previously missing QW Admin permission and to better align with the permission labels displayed in Security Administrator. See details in the [Security Guide](#).

Resolved Issues 6.1.377

View Report Settings in Default View not respecting settings – An issue has been resolved where, if no default view was defined in the application, changes made to Report tab settings were not fully applied in generated reports. Reports now correctly reflect the configured settings even when a default view is not explicitly set.

Resolved Issues 6.1.376

Reinstated Multiple Variable Delete in QW Admin – The ability to delete multiple variables at once in QW Admin has been restored, allowing administrators to manage variables more efficiently.

QW Admin changes could break view filters – An issue has been resolved where structural changes in QW Admin, such as deleting variables or changing their positions, were not reflected in existing view filters. This could result in invalid filter references and, in some cases, cause QW Workstation to crash. Filters tied to deleted variables are now automatically removed, and remaining filters are remapped to align with updated variable positions.

Save As did not enforce proper file extensions – An issue has been resolved where using Save As in QW Admin without specifying a valid file extension could result in a failed or partial save. File extensions are now handled correctly.

New Message Log incorrectly prompted for filename – An issue has been resolved where selecting New in the Message Log incorrectly prompted the user to save a file. The action now clears the contents without prompting.

File Pack failed when Command to Execute was defined – An issue has been resolved where the File Pack utility would fail if an application included a Command to Execute reference. This scenario is now handled correctly.

Search filter did not include view names in DIR mode – An issue has been resolved where the Open Application search filter did not include view names when launching via a DIR file. Filtering now works as expected.

Corrupted limits could cause application crash – An issue has been resolved where invalid or corrupted limits could cause QW Workstation to crash on open. These conditions are now automatically corrected.

Popup field length conflicts blocked saving – An issue has been resolved where mismatched field lengths between popup definitions and referencing variables could prevent saving in QW Admin. A validation check now allows users to resolve the issue or apply an automatic correction.

Invalid characters in popup definitions caused validation loop – An issue has been resolved where certain invalid characters in popup descriptions could trigger an infinite validation loop. This behavior has been corrected.

Variable Reference Panel not showing all references – An issue has been resolved where the Variable Reference Panel did not display all references in some cases. References now display correctly.

Variable Reference Panel column headers confusing – Column headers in the Variable Reference Panel have been updated to improve clarity.

Change highlight lost after validation failure – An issue has been resolved where yellow highlights indicating unsaved changes were lost after a failed validation attempt. Highlights are now preserved.

View Min/Max incorrectly updated in some regions – An issue has been resolved where locale settings using non-period decimal separators could cause Min and Max values in views to lose decimal precision. Values are now handled correctly.

Changing variable type could break views – An issue has been resolved where changing a variable type from numeric to text could result in read-only views. Views now function correctly after such changes.

Resolved Issues 6.1.365

Double quotes in variable filter values causing view load failure – An issue was identified where views would fail to load if a variable filter contained double quotes within the filter value. This resulted in an error when attempting to open the view. This issue has been resolved, and views now load correctly when filter values include double quotes.

Resolved Issues 6.1.364

Popup Editor Crashes – This release resolves several crash scenarios reported by customers when using the Popup Editor. These issues could occur intermittently during normal editing operations and have been corrected to improve stability.

Popup Editor not prompting to save on open – When opening a popup in the Popup Editor, users were not prompted to save existing unsaved changes before another popup was opened, creating a risk of losing work. The editor now detects unsaved changes and prompts users to save before allowing another popup to be opened.

Auto Lookup mapping when connected to external data – When a QW Application was configured to retrieve data from an external data source, newly added lookup variables were not being populated correctly. This issue has been resolved.

Popup file associations – Popup file associations with the Quality Window Popup Editor were not functioning as expected. This issue has been resolved so popup files now correctly open with the Popup Editor.

Resolved Issues 6.1.358

Alarm Comment field not visible in low screen resolutions – An issue has been resolved where the comment field could become hidden when Quality Window was used at low screen resolutions and/or with large display scaling, preventing users from acknowledging alarms. This issue has been corrected. As part of this change, the minimum supported display setting for Quality Window is now 1024 × 768 resolution with up to 100% scaling.

Resolved Issues 6.1.357

Editing Last Record re-triggers Alarms – An issue has been resolved where editing the last record would re-trigger alarms even if the value that originally caused the alarm was not changed. Alarms will now only trigger on edit when the relevant value has actually changed.

Adding Text Variable in View converts it to Numeric – In some cases, adding or inserting a text variable into a View incorrectly converted the variable type to numeric, causing the View to become read-only. This issue has been resolved. Quality Window now detects this state, automatically corrects the variable type at runtime, and allows users to optionally save the View to make the correction permanent.

Read-only View Reason displaying incorrect variable number – The read-only reason message incorrectly displayed the base application variable number instead of the View-specific variable number. This has been corrected to display the appropriate variable number for the View.

Alarm Trigger Notification not being sent – In some cases, if a user acknowledged an alarm immediately after it was triggered, only the acknowledgement notification was sent and the original alarm notification was not delivered. This issue has been resolved.

Resolved Issues 6.1.352

Clearing all Variables in view results in read-only state – An issue has been resolved where clearing all variables in a View in View Manager caused the Date and Time field lengths to be incorrectly set to 10 instead of 8, resulting in the View becoming read-only.

Custom Date filters crashing QW Workstation – QW Workstation could crash in some cases when users entered a custom “where” filter using date and time fields. This issue has been resolved.

Loading Views from Views Manager can Crash – A rare issue has been resolved where loading a View in View Manager could cause Quality Window to crash.

Localization issue in QW Admin – Depending on the selected Windows region, QW Admin did not properly handle different decimal separators such as commas and would prevent saving of changes. QW Admin now correctly supports different regional numeric settings.

Rename QW Application Error – An issue was fixed in QW Admin where renaming a QW Application resulted in an error, and the transaction log file was not renamed properly.

Save View as throws error – In QW Workstation, in some cases when using the Save View As feature to save the current View as a distinct application, an error occurred preventing the QW Application from being created. This issue has been resolved.

Output file writing issue in views – When a View was loaded and a user edited a record that was not the last record in the current View, the output file was updated contrary to the intended design. This has been corrected.

SumStat Script Updated – A new version of the QWSumStat.qwx6 file has been included in this release to resolve several issues with report generation. Customers using SumStat who wish to deploy this update should contact support for guidance before replacing the file in their Shared Configuration.

Non-Fatal Exception resolved – A non-fatal exception was being written to QW error logs unnecessarily, resulting in unneeded log entries. This has been corrected.

2025-10-28 | Build 6.1.271 & 6.1.273

New Features and Improvements

Report Document Improvements

This release focused solely on customer feedback for Report Documents. Improvements were added to reduce administrator effort in designing Report Documents and to improve access for end users through a new filterable Report Document selector for QW Applications with many Report Documents defined.

Report Document Landscape Orientation – Report Documents can now be set to landscape or portrait using a new property in the Properties dialog.

New Default Font for Report Documents – Administrators can now set a default font for a Report Document, which automatically applies to all newly created elements to ensure consistent branding.

Add Images to Table Cells – Table cells can now contain either an image or text. This allows administrators to enhance the visual layout of Report Documents. Note: a single cell cannot contain both text and an image.

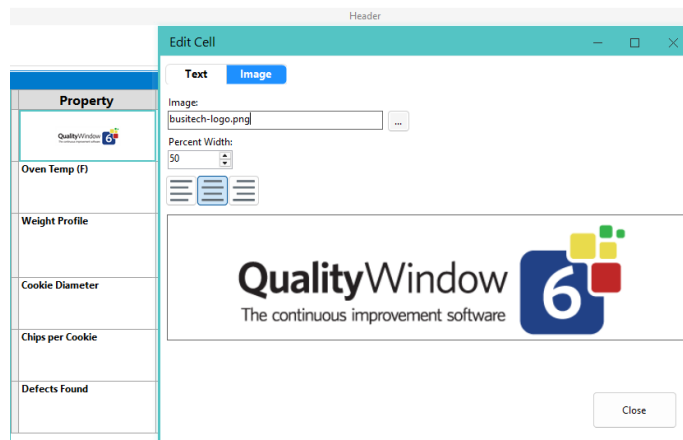
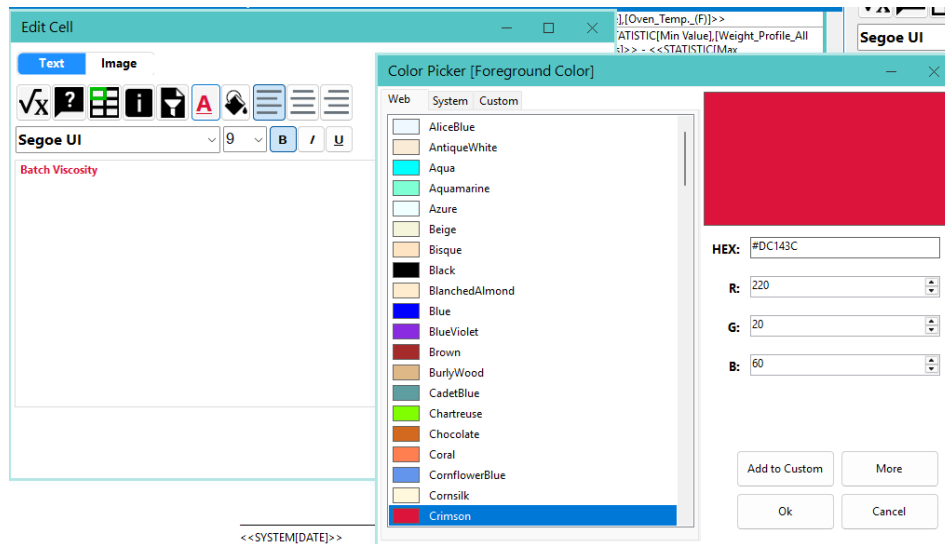


Table Cell Image or Text Options

New Formatting Experience in Report Documents – Administrators now have expanded styling controls, including a new font selection interface and support for font and background colors in text and table cell elements.



Header Column Color Control – Column header background and font colors can now be controlled independently for greater design flexibility.

Background	Foreground	
#48D1CC	#000000	F
#48D1CC	#000000	F
#48D1CC	#000000	F
#48D1CC	#000000	F
#48D1CC	#000000	F
#48D1CC	#000000	F

Header Row color options.

Column Width Settings – Columns now support two width settings: Fill and Percentage. Percentage mode allows precise column sizing, while Fill mode ensures columns automatically occupy remaining space. Multiple Fill columns share the remaining width equally.

Width	Percent
Fill	
Percentage	20
Percentage	10
Percentage	10
Percentage	20
Percentage	15

Table Width Settings

Advanced Table cell selection

The table element now supports row, column, and multi-cell selection enabling Report Document authors the following capabilities:

Bulk Styling – Apply styles and formats to multiple cells at once with a new floating toolbar enabling authors to apply text font, font size, alignment, font colors, and background colors across multiple cells, entire columns, or rows.

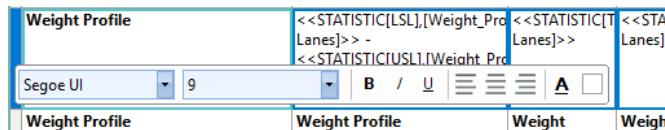


New floating formatting toolbar

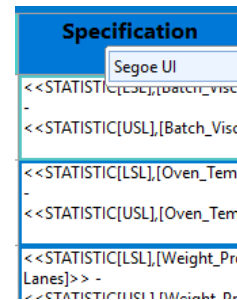
Property	Specification	Target	Batch Avg	Range (M)
Batch Viscosity	<<STATISTIC[LSL],[Batch_Viscosity]>> - <<STATISTIC[USL],[Batch_Viscosity]>>	<<STATISTIC[TGT],[Batch_Viscosity]>>	<<STATISTIC[Avg],[Batch_Viscosity]>>	<<STATISTIC[Min Value],[Batch_Viscosity]>> - <<STATISTIC[Max Value],[Batch_Viscosity]>>
Oven Temp (F)	<<STATISTIC[LSL],[Oven_Temp_(F)]>> - <<STATISTIC[USL],[Oven_Temp_(F)]>>	<<STATISTIC[TGT],[Oven_Temp_(F)]>>	<<STATISTIC[Avg],[Oven_Temp_(F)]>>	<<STATISTIC[Min Value],[Oven_Temp_(F)]>> - <<STATISTIC[Max Value],[Oven_Temp_(F)]>>
Weight Profile	<<STATISTIC[LSL],[Weight_Profile_All Lanes]>> - <<STATISTIC[USL],[Weight_Profile_All Lanes]>>	<<STATISTIC[TGT],[Weight_Profile_All Lanes]>>	<<STATISTIC[Avg],[Weight_Profile_All Lanes]>>	<<STATISTIC[Min Value],[Weight_Profile_All Lanes]>> - <<STATISTIC[Max Value],[Weight_Profile_All Lanes]>>
Cookie Diameter	<<STATISTIC[LSL],[Avg_Diameter]>> - <<STATISTIC[USL],[Avg_Diameter]>>	<<STATISTIC[TGT],[Avg_Diameter]>>	<<STATISTIC[Avg],[Avg_Diameter]>>	<<STATISTIC[Min Value],[Avg_Diameter]>> - <<STATISTIC[Max Value],[Avg_Diameter]>>

Example of multi selection triggering the floating toolbar

Selection Deletion – Easily clear the contents of multiple cells or delete entire columns or rows when selected using the row selector or column header and pressing the Delete key on the keyboard. Selecting cells and pressing Delete clears cell contents. Selecting a row by clicking the row selector on the far left deletes the entire row. Selecting a column header deletes the entire column.



Row selection



Column Selection

Column Header Deletion – Authors can now also delete columns by deleting the column header directly in the Table Properties editor.

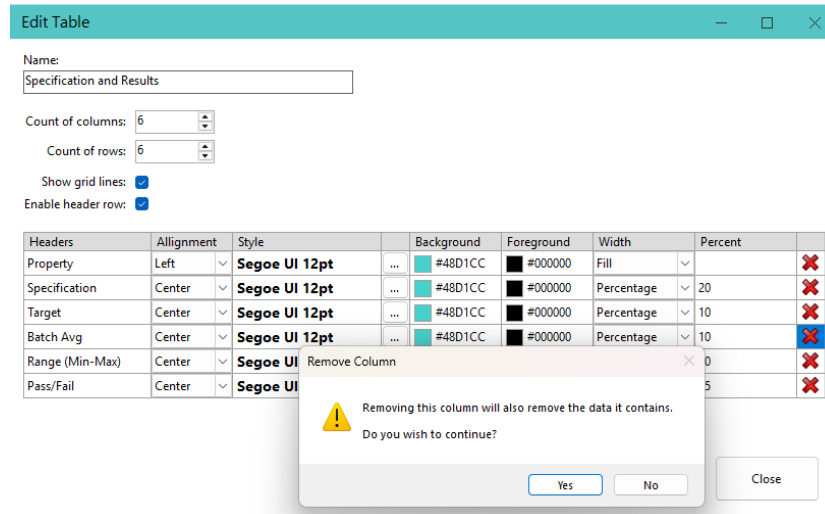


Table Header Column delete

Selection Copy, Cut, Paste – Keyboard clipboard features have been added to the table when selecting multiple cells, entire columns, or rows. At this time, clipboard menu access is not available.

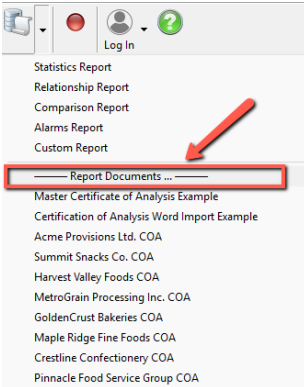
Keyboard Command	Result
CTRL + C	Copy selection and formatting into the clipboard.
CTRL + X	Cut selection and formatting into the clipboard.
CTRL + V	Paste clipboard contents into the current selection
CTRL + SHIFT + V	Paste text values only (preserves existing formatting)

Clipboard Rules:

- If the contents of the clipboard have more cells than the target selection, the contents will be pasted into adjacent cells to include all copied data.
- If the target selection is larger than the clipboard contents, the contents will repeat left-to-right and top-to-bottom.
- Formatting is always copied during Copy/Cut operations unless using CTRL + SHIFT + V.

Workstation Report Document Improvements

Report Documents List Dialogue – In this release, and in response to customers creating a large number of Report Documents for a single QW Application, a new dialog has been added, accessible through the “---- Report Documents ... ----” menu option. The first ten items continue to appear in the dropdown list, while all Report Documents are now accessible through a new filterable dialog, allowing users to quickly locate the document they need.



Updated Reports dropdown menu

Document Name	Document Type	View	Last Modified
Master Certificate of Analysis Example	QWDocument	Certificate of Analysis for selected Batch ...	2025-10-17 4:00:53 PM
Certification of Analysis Word Import Example	WordTemplate	Certificate of Analysis for selected Batch ...	2025-06-10 12:36:26 AM
Acme Provisions Ltd. COA	QWDocument	Certificate of Analysis for selected Batch ...	2025-10-17 4:01:26 PM
Summit Snacks Co. COA	QWDocument	Certificate of Analysis for selected Batch ...	2025-10-17 4:01:45 PM
Harvest Valley Foods COA	QWDocument	Certificate of Analysis for selected Batch ...	2025-10-17 4:02:06 PM
MetroGrain Processing Inc. COA	QWDocument	Certificate of Analysis for selected Batch ...	2025-10-17 4:02:25 PM
GoldenCrust Bakeries COA	QWDocument	Certificate of Analysis for selected Batch ...	2025-10-17 4:02:50 PM
Maple Ridge Fine Foods COA	QWDocument	Certificate of Analysis for selected Batch ...	2025-10-17 4:03:09 PM
Crestline Confectionery COA	QWDocument	Certificate of Analysis for selected Batch ...	2025-10-17 4:03:26 PM
Pinnacle Food Service Group COA	QWDocument	Certificate of Analysis for selected Batch ...	2025-10-17 4:03:43 PM
BlueRiver Packaging Solutions COA	QWDocument	Certificate of Analysis for selected Batch ...	2025-10-17 4:04:03 PM
Evergrain Natural Products COA	QWDocument	Certificate of Analysis for selected Batch ...	2025-10-17 4:04:28 PM

New Report Document List with Filter option

Resolved Issues

Exported Report Document Error on Edit – Resolved an issue where exporting a Report Document that referenced a view not present in the target QW Application caused an error and unexpected application closure when saving document properties.

Report Document Column Header Edit Error – Resolved an issue where editing a column header text would cause an error if a new column was added to a table element and its alignment had not been set.

Report Document System Value Dialogue Search Not Working – Resolved an issue where the search function in the System Value Dialogue was not operational.

Issue with Deleting Last Report Document – Resolved an issue in QW Admin where deleting the last Report Document in an application caused an error and unexpected closure.

Shared Configuration Auto-Creation of File Issues – Resolved an issue where missing shared configuration files were not being fully recreated when users attempted to auto-provision them.

QW Audit Log Conflict Not Working in All Conditions – Resolved an issue where, during detection of a log file location conflict, QW did not correctly copy the log file if a file already existed at the destination.

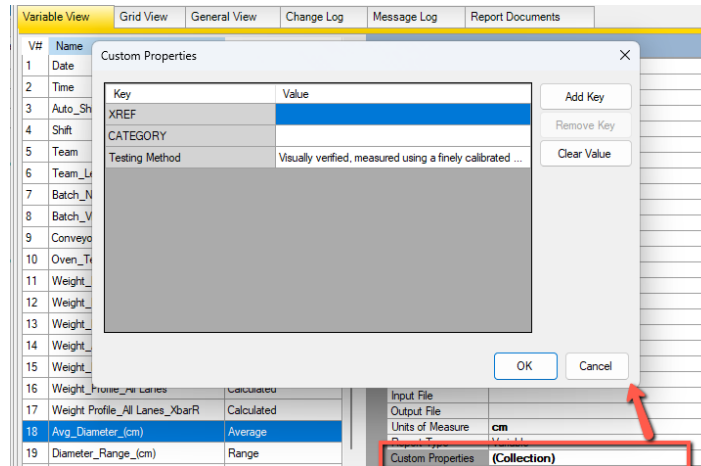
Resolved Issues in 6.1.273

SDK InsertRecord Not Inserting in the Right Location – Resolved an issue in the QW SDK where, in some cases, using the QWAccess.InsertRecord method caused records to be inserted out of order, resulting in an out-of-sequence record set.

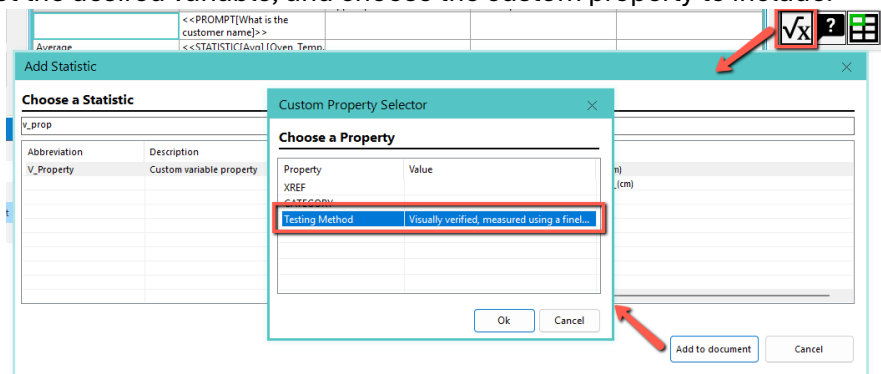
QW Admin Refresh Application Fix for Out-of-Sequence Records – Resolved an issue in QW Admin where the Refresh Application function did not properly correct out-of-sequence records in some rare cases. This feature now restores the correct record order.

New Features and Improvements

Custom Properties Update – Variable reference fields are now labeled Custom Properties, allowing administrators to define and manage custom metadata for any variable in an application. When a new property key is added, it appears automatically across all variables—no manual setup needed. The legacy XRef and Category fields are included by default and cannot be removed. Custom property keys support spaces and are case-insensitive.



Custom Property Support in Report Documents – Report Documents now support outputting custom properties, allowing standardized content generation per variable. Use the *V_Property* statistic, select the desired variable, and choose the custom property to include.



Conditional Output in Text Elements – You can now use the `<<IF>>` function in text elements to conditionally display content based on variable values, user prompts, or system values. Supports numeric and string comparisons, with modifiers like `*` upper for case-insensitive checks. Ideal for adding dynamic messages or conditional labels without needing multiple templates. [See the full Report Documents feature guide for details.](#)

```
<<IF {FIELD NAME}, {OPERATOR}, {COMPARISON VALUE}, {TRUE TEXT}, {FALSE TEXT}>>
```

Advanced Formatting via Formatting Codes – This release introduces support for advanced text formatting, including text highlighting, font attributes, and cell background colors, applied to specific parts of a report document. These features are available through formatting codes only; a user interface will be added in a future release based on customer feedback and usage patterns. [See the full Report Documents feature guide for details.](#)

Resolved Issues

Lookup Unable to Reference Calculated Fields – Resolved an issue where calculated fields could not be used as the *Variable Key to Popup File*, preventing them from driving lookup values.

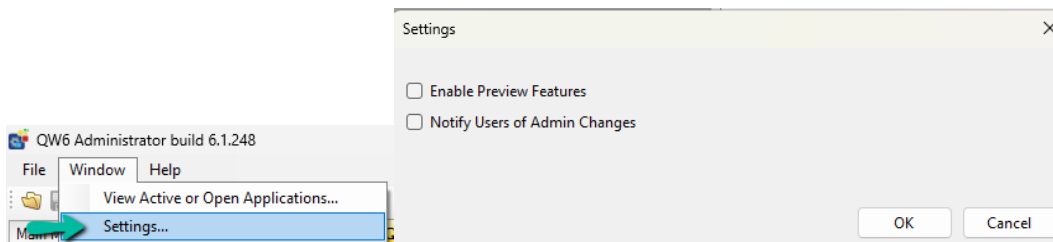
Custom Property Changes Not in Change Log – Fixed an issue where edits to custom properties (formerly reference fields) were not being recorded in the Admin change log.

QW RS-232 Admin getting locked – An issue was resolved where when a user gives focus to the find text, text box the application would become locked and not respond to user interactions.

2025-07-31 | Build 6.1.254

New Features and Improvements

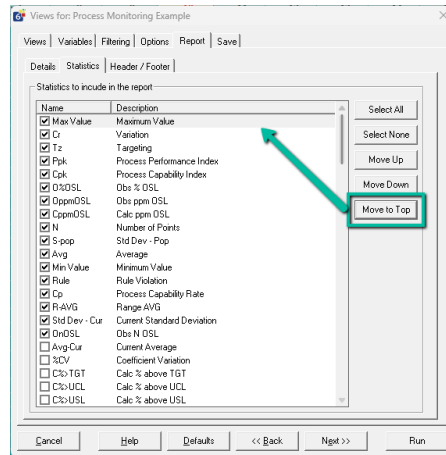
Disable Admin Change Messages – QW Admin now includes an option to disable the notification shown to users when an application is changed by an administrator. This is a global setting that affects all QW Applications. By default, it is enabled. Disabling it only affects future admin changes; any messages already queued will still be shown. You can change this setting under Window -> Settings... by unchecking Notify Users of Admin Changes.



QW Admin Setting for Admin notifications

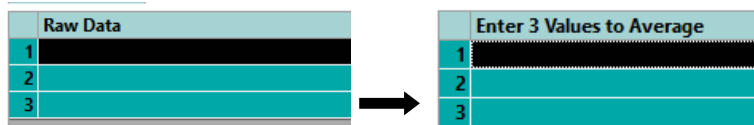
Display Length for Text Fields – Building on the existing display length support for popup and lookup fields, Text variables can now define a custom display length. This allows admins to optimize the logsheet layout. Display length must be less than or equal to the variable's total length. If a larger value is entered, it will automatically be trimmed. This update also fixes an issue where display length was previously being misapplied.

Move to Top – View Report Statistics Button – A new *Move to Top* button has been added in the View Manager, allowing users to reorder statistics in View Reports more easily by pushing a selected statistic to the top of the list.



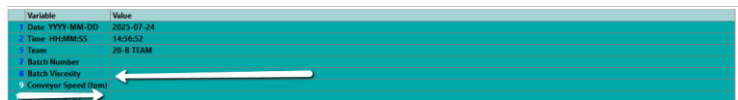
Screenshot of Move to Top button

Clearer Average Data Entry Label – The label for average variable’s data entry now more clearly prompts users by displaying: *"Enter [Count] values to Average"* instead of the generic *"Raw Data,"* improving clarity for average-type variables.



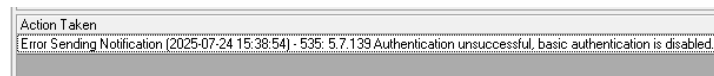
New Average Data Entry label

Auto Resize of Add Screen Columns – Data entry columns on the Add screen now auto-resize to fit available space. If the variable names are short, the columns will use less than 50% of the panel. If they’re long, the layout caps at 50% to maintain readability and usability.



Screenshot of new add screen column auto size

Alarms show Notification Errors – When an alarm fails to trigger a notification (e.g., due to an invalid address or server error), an error entry is now shown in the alarm list with details for immediate troubleshooting.



Example Notification error entry

Save Button Disabled after click – The Save button (and other Add screen controls) are now disabled once clicked, providing clear feedback that the save operation is in progress.

Contextual Add Record with Views – When adding records using a View, Quality Window now ignores input file values for variables that are not part of the View. This ensures that only the

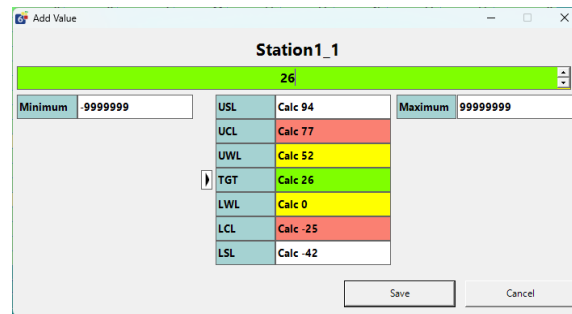
Quality Window 6.1.400 - Release Notes

variables included in the View contribute to the new record, even if other variables have input mappings defined in the application.

QWAdd.exe Supports Adding by View – The QWAdd.exe automation utility now accepts a View name as part of the template path, allowing it to collect only the variables defined in that View. This provides integrators with fine control over which data points are collected at what time during the manufacturing process.

Example: `C:\Program Files (x86)\Busitech\QW6\QW6Add.exe "C:\Busitech\My QW Application.QWT|My View Name"`

New Input Form in SDK – A new single-variable input form is now available in the SDK for custom solutions. This form enables a streamlined, single-cell editing experience. If you're interested in using this in your deployment, please contact Busitech to discuss options.



Station1_1			
26			
Minimum	9999999	USL	Calc 94
		UCL	Calc 77
		UWL	Calc 52
		TGT	Calc 26
		LWL	Calc 0
		LCL	Calc -25
		LSL	Calc -42
		Maximum	9999999

Example of the new Input Form

Report Documents (Certificate of Analysis) Improvements

We've implemented several enhancements to the new Report Documents feature based on customer feedback. For full details, refer to the updated [Report Documents Admin Guide](#).

Duplicate Document – You can now duplicate an existing document to make minor edits for different audiences without starting from scratch.

Export Documents – Share Report Documents across QW Applications with just a few clicks. Build once, reuse many times.

Macro-Enabled Word Document Support – Added support for importing and generating `.docm` (macro-enabled Word) files.

Set Default Export Format – Admins can now set the default output format (PDF or Word) for generated documents. Users can still change the format at generation time.

View Filters – Insert filter prompt values directly into the document using the new [View Filters](#) button in the editor.



And/Or	Variable	Operator	Value
And	Batch_Number	=	?

* Prompt value (?) will return users response

View Filter Value Token Chooser Dialogue

Table Header Row Editor – The table editor now includes a *Header Row Editor*, allowing you to customize header labels, alignment, and font style for each column individually.

Headers	Alignment	Style
Column 1	Left	Segoe UI 9pt
Column 2	Right	Microsoft Ya...
Column 3	Center	Maandira CD 8...
Column 4	Center	Frutiger_Script_2.056

Updated Table Header Row Editor

Resolved Issues

QW Admin performance issues – Resolved a slowdown when saving large applications containing many popup variables linked to large popup databases. Saving and updating QW Application files should now be significantly faster when these conditions exist.

Duplicate variable no longer appending incremental suffix – Fixed an issue where QW Admin stopped appending “_#” to duplicated variable names. The automatic suffixing behavior has been restored.

Filters using Beginning and End incorrectly flagged records – Fixed a bug where filters set to "From Beginning of XXX" and "To End of XXX" displayed inaccurate validation messages for records with valid datetimes. This now behaves as expected.

Filters on Date field may crash application – Resolved a crash caused by applying a variable-specific filter to a date field in Quality Window.

Quality Window 6.1.400 - Release Notes

Protected/Required fields not updating in Views – Addressed an issue where updates to "Protected" or "Required" field properties in QW Admin were not reflected in Views if the values remained the same.

Unexpected error when opening a second script – Fixed a crash that could occur when opening a second script in the same QW Admin session.

Move or Save As fails with external references – Resolved a crash when attempting to move or save a QW Application that includes an external reference (e.g., DDE, OPC, or DataHub) for input/output files.

Annotated fields not respected in Summary Views – Fixed a bug where Summary Views ignored the Annotated and X/Y Axis settings from the QW Application configuration.

Audit Log crashing when columns missing – Older audit logs missing newer columns were causing crashes in the Audit Log Viewer. This issue has been resolved.

2025-06-10 | Build 6.1.234

New Features and Improvements

New Report Documents Feature for Certificates of Analysis and More

Busitech introduces a powerful new way to generate report documents—such as Certificates of Analysis (COAs) or other Word/PDF files—that incorporate Quality Window (QW) data and industry-leading statistics. With a single click, users can now export QW data into documents without needing to configure merge codes or Word mail merge fields—though those options remain available. Learn more in the [Report Documents Feature Guide](#).

The screenshot displays the 'QW Application Editor' interface for a 'Certificate of Analysis' report. The report is titled 'Certificate of Analysis' and is for 'Terrabake Industries'. It includes a header with the company logo and name. The main content is organized into sections: 'Customer Information', 'Specifications and Results', and 'Supplier Contact'. The 'Customer Information' section includes fields for Customer ID, Batch ID, Description, Material Spec Number, Special Chemicals and Furnace Order, Supplier, Supplier Location, Production Date, and Terrabake Address. The 'Specifications and Results' section is a table with columns for Property, Specification, Target, Batch Prop, and Range (Min/Max). The 'Supplier Contact' section includes fields for Supplier Name, Supplier Address, Supplier Phone, and Supplier Email. The interface also shows a left-hand navigation pane with options like 'Add Text', 'Add Image', 'Add Table', and 'Report Document Elements'. A right-hand pane shows 'Properties' for the selected element.

New Report Documents Editor

Popup Improvements

Popup Variable Length Improvements – Popup variables now automatically set their appropriate length. A new Display Length property has been added that controls how wide the column appears in the Logsheet, helping balance field visibility and layout without risk of truncation.

Variable Details	
Variable Number	9
Variable Name	Where was this problem found?
Length	63
Display Length	30
Popup File Name	WHEREWAS
Number of questions to ask	Where was off quality found?
Which field to display in Popup	Description

Popup Display Length in QW Administrator

Popup Level Filtering – A new filter text box lets users filter the current popup level when adding or editing a record. This only filters the current level; child values still require a user selection to then filter further.

Variable Name	V30 - Culture Initials
Data Entry	Required
Data Type	Popup
Units	
Sampling Plan	0
Filter current Popup items...	
What is your initials ?	
<ul style="list-style-type: none"> 10 - NL 12 - ML 28 - BS 29 - DD 30 - MC 31 - NM 32 - BC 33 - MB 34 - JH 35 - ES 36 - CA 	

Unfiltered Popup Selection

Variable Name	V30 - Culture Initials
Data Entry	Required
Data Type	Popup
Units	
Sampling Plan	0
Filter current Popup items...	
M	
What is your initials ?	
<ul style="list-style-type: none"> 12 - ML 30 - MC 31 - NM 33 - MB 39 - KM 45 - AM 47 - KM 57 - JM 	

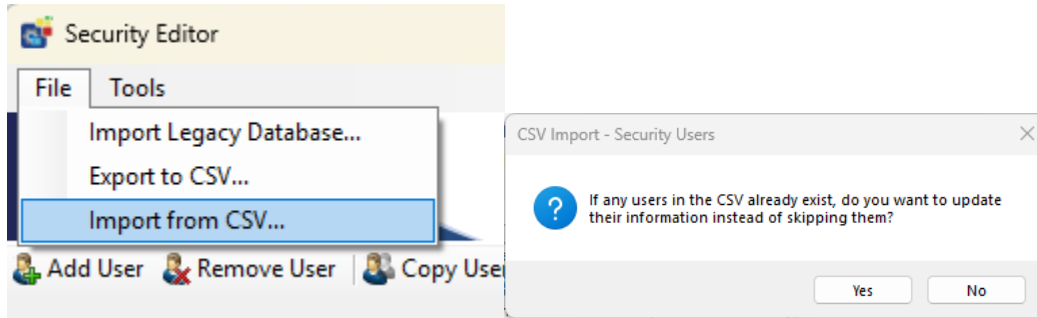
Filtered Popup Selection

Security and Traceability Improvements

Security Permission Label Update – The permission in QW Security Administration is now labeled “Allow Views Management.” This more accurately reflects its function: it governs only the ability to create, update, or delete views. It does not restrict access to filters.

Workstation Toolbar Experience Update (Views/Filter) – The Filter and Views buttons in the QW Workstation toolbar have been refined for clarity and usability. The Filter button now only shows filter options and is always accessible—it never prompts for permissions. View management functions are available only via the Views button or Views Manager sub-button.

Import Security Users – The Security Administration console now supports importing user lists from CSV files. If a user already exists, the administrator is prompted to update or skip the record.



New import feature in the Security Editor

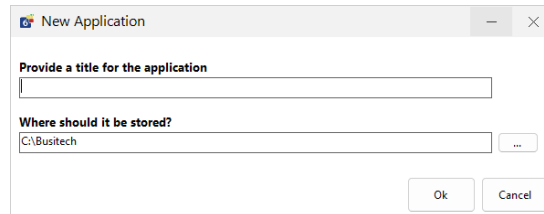
Protections Against Security Lockout – The system now prevents configurations that would lock out the security administrator. A warning appears if such a setup is detected.

Transaction Audit Log – Performance Improvements – Optimizations improve performance when viewing large record sets and editing older records. Unnecessary entries related to recalculations have been eliminated. Admins can optimize logs using the File → Refresh Application option.

Admin Log Entry for Application Creation – A log entry is now added when an admin creates a new QW application, helping track when and where it originated.

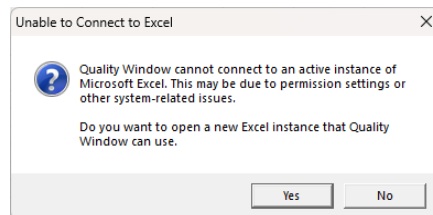
Other QW Administrator Improvements

New Application Dialogue – A redesigned interface makes it easier to name new applications and select their storage location when creating them.



Create new application dialogue

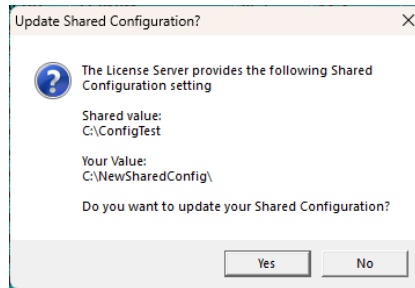
Excel to QW Importer – User Context Support – This utility can now launch Excel under the same user context as Quality Window, resolving access issues in secure or restricted environments.



New prompt for Excel connectivity issues

Shared Spec Manager Configuration – The Spec Manager’s list of applications is now stored in the shared configuration folder, allowing easy access across admin users.

Auto-Provisioning of Shared Configuration and Data Folders – When connecting to a QW License Server, users are now prompted to set shared folders if their configuration differs from the setup provided by the license server.

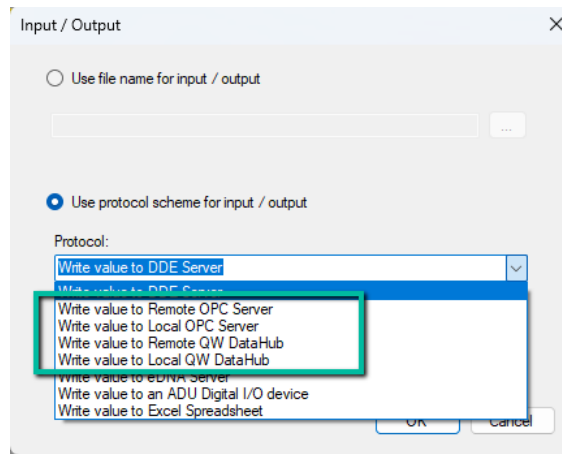


New Auto-Provision prompt

Improved Input/Output File Integration – Input/output protocol setup now supports distinct address formats for OPC Classic and renames “QWIOServer” references to QW DataHub.

Local OPC Address	OPC://{Node}/{ProgID}/{TagName}
Remote OPC Address	OPC:/{ProgID}/{TagName}

Note: OPC UA is supported only via [QW DataHub 6.1](#), not directly by Quality Window.

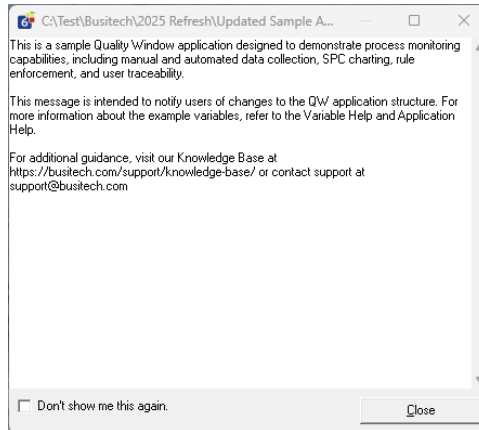


Screenshot of the new Input/Output options

QW Workstation Improvements

Insert Variable in View Manager – A new Insert button has been added to the Variables tab in the Views Manager, making it easier to add one or many variables at a specific position within a view with a single click. This allows view managers to insert variables directly where needed without relying solely on Move Left or Move Right actions.

User Message Log Improvements – The log shown after QW application changes now wraps long lines and includes a close button for easier dismissal.

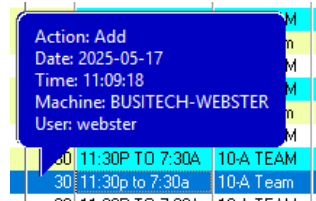


Example of the new User Message Log experience

Resolved Issues

Replace Variable in View Manager Fixed – Previously, when users used the Replace button on the Variables tab in the Views Manager, the newly selected variable would not inherit all the correct variable properties. This issue has now been resolved.

Transaction Log Viewer showing "No Transaction History" – Fixed an issue where the transaction info bubble did not show data for the selected row.



Transaction info bubble fix

Login Dialogue Missing from Start Bar – The login prompt now forces an icon to appear on the taskbar, making it easier to locate if hidden.

Root Folder Storage Error – Fixed a bug where storing a QW application at the root of a drive could cause the app to crash.

View Overflow Error – Resolved an “overflow” error that appeared with certain view configurations on load.

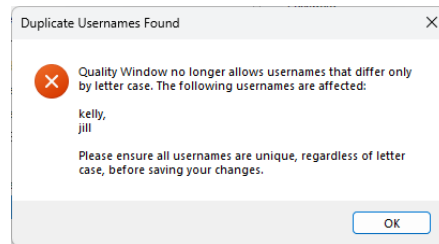
View Manager Replace Variable Specification Issue – When using the **Replace Variable** button on the Variables tab in the Views Manager, the new variable would incorrectly inherit the process limits of the variable it replaced. This issue has now been resolved.

Previous Builds

2025-04-07 | Build 6.1.208

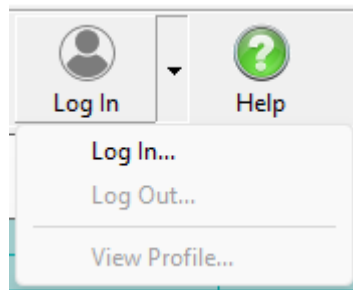
New Features and Improvements

Username are now case-insensitive – To reduce user confusion and align with security best practices, Quality Window no longer distinguishes usernames based on letter case. While duplicate usernames with different casing can still log in, administrators will be blocked from editing the security configuration until the duplicated username conflicts are resolved.

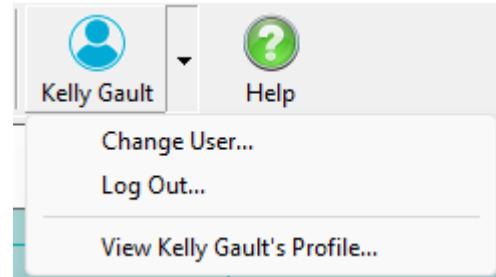


Example Administrator Message when duplicate usernames are found.

Improved login visibility – Toolbar and menu updates now provide a clearer indication of when a user is logged in. Visual cues include a distinct toolbar button color and display of the full user name, enhancing transparency and usability.



New Experience when users is not logged in



New Experience when user is logged in

Automatic log file archiving – To reduce disk usage on systems with limited storage, Quality Window now compresses and archives the previous day's logs and maintains only the last 10 days of log files.

Resolved Issues

Security Variable not updating on edit – Fixed an issue where editing a record did not properly update the user assigned to the configured Security Variable. The correct user is now recorded in both the audit trail and data record's security variable (if configured).

Crash on short IO filenames – Resolved an issue where QW Admin would crash if an input or output file had fewer than 3 characters in its name.

Crash when using #Include in scripts – Addressed a bug where using #Include in certain script contexts would prevent applications from opening.

Error when variable appears twice in a view – Fixed a bug that triggered an error when accessing Variable Information “VarInfo” via the toolbar for variables that appeared more than once in a view.

Loss of “Summarized By” settings on admin changes – Resolved an issue where admin changes would reset the “Summarized By” configuration in views.

Incorrect variable type when summarizing Date/Time values – Fixed an issue where summarizing views that included Date or Time variables as "Last Value" incorrectly cast them as numeric.

Summarized view grouping issue – The summarize function now correctly groups all records with identical values, regardless of their sequence order.

Previous Builds

2025-02-10 | Build 6.1.174

Resolved Issues

Flexible Popup Excel Import/Export Issues Resolved – Addressed a problem where the flexible popup functionality interfered with Microsoft Excel import and export. The issue caused failures when popups had unbalanced levels, preventing proper use of the feature. This has now been fixed.

Enter Key Incorrectly Selecting Checkbox Fixed – Fixed an issue where pressing the enter key on the add/edit screen would inadvertently skip over a numeric checkbox field and automatically set it to checked. This behavior has been corrected to ensure accurate data entry.

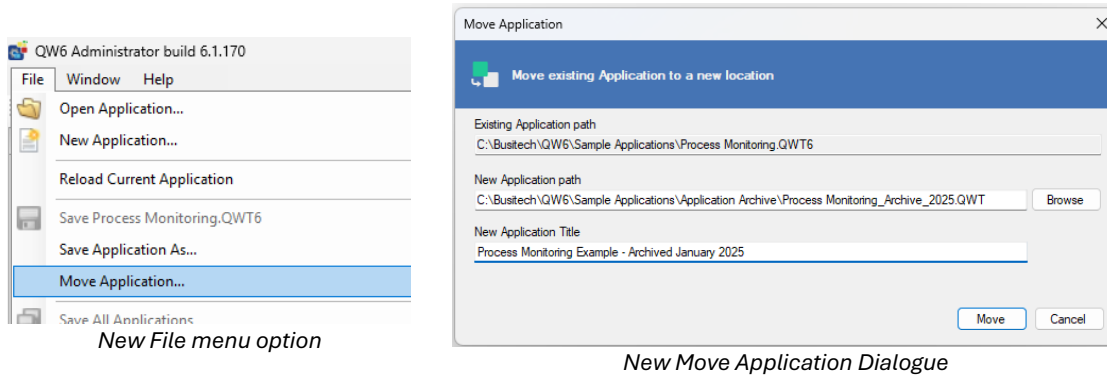
2025-02-04 | Build 6.1.172

New Features and Improvements

Flexible Popup Structure – Previously, hierarchical popups required full population at every level. With this update, you can now create hierarchical dropdowns without requiring every level to have child nodes, providing greater flexibility in structuring your data.

Popup Editor Default Folder – The Popup Editor now defaults to using the Data Directory configured in Shared Configuration for save and open operations. It will remember the last folder used during a session and reset to the default data directory when closed.

Move Application Feature – Administrators can now easily move an entire QW application, including associated files, to a new location. This feature, available in the Maintain Application console under **File → Move Application**, ensures that input, output, help, and popup files located in the same folder as the application are copied while leaving references intact to avoid disruptions to other applications.



Improved Save As with Title Field – Enhancements to the "Save As" functionality now allow for more intuitive title management during the saving process.

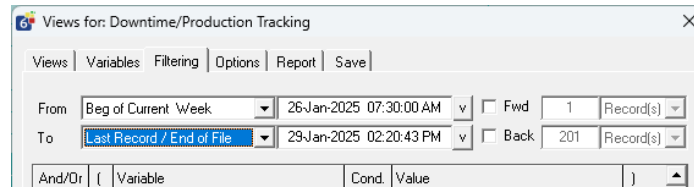
Improved Lookup Administration – The lookup experience in the QW Application Editor (Maintain Application) has been refined with the following improvements:

1. The **Variable Key to Popup** property has been repositioned as the first popup-related property for better workflow.
2. The **Variable Key to Popup** selection now filters the list to include only text and popup variables, simplifying configuration.
3. **Popup Filename** and **Number of Questions to Ask** now auto-fill based on the selected popup, and **Which Field to Display** defaults to the first available field that isn't already used.

Variable Details	
Variable Number	7
Variable Name	Product_Std_Cost
Field Type	Lookup
Length	8
Variable key to Popup file	v6 - Product_Description
Popup File Name	v3 - Team
Number of questions to ask	v6 - Product_Description
Which field to display in Popup	v9 - Downtime_Type
Required	v12 - Downtime_Cause
Protected	v18 - Checkbox10
Sampling Plan	v19 - CheckboxYN
Convert to Capital Letters	v20 - Comments

Example of new property placement and filtering

Improvements to Last Record Filter – The **To: last record** filter previously prevented users from saving filters when using **From** beginning filters due to conflicts with record ordering. The filter now automatically uses the end of the file or the current date-time, eliminating this limitation.



Improved Last Record / End of File filter label

Resolved Issues

Improper Filter Warning After Adding a Record – A warning was incorrectly displayed in certain filter settings, stating that the added record would not be visible. This warning now only appears when appropriate.

F9 Previous Value for Popups Providing Incorrect Data – An issue with the **F9 Previous Value** feature sometimes caused bad data to be inserted into popup fields. This has been resolved.

Infinite Load Loop When Only Deleted Records Exist – A bug that caused an application to enter an infinite loading loop when all records were deleted has been fixed.

Variable Reference Field Changes Not Enabling Save – When modifying reference fields for variables in QW Admin, the system did not detect the change, preventing users from saving. This has been corrected.

Popup Integrity Check Improvements – Integrity and validation checks for popups and lookup variable configurations have been improved to prevent unexpected results when popups are edited in a way that invalidates existing configurations.

Popup Editor Hiding Behind Other Windows – Fixed an issue where the Popup Editor could become lost behind other windows or appear as a background task, improving usability.

Incorrect Field Progression with Enter Key on Add/Edit Screen – When users pressed **Enter** after entering a value in a field before a popup variable, the cursor would auto-select the popup value and skip ahead. This behavior has been corrected.

Error When Pasting Reference Variables – Resolved a crash that occurred when pasting reference-type variables (Lookup, Range) in the QW Application Editor.

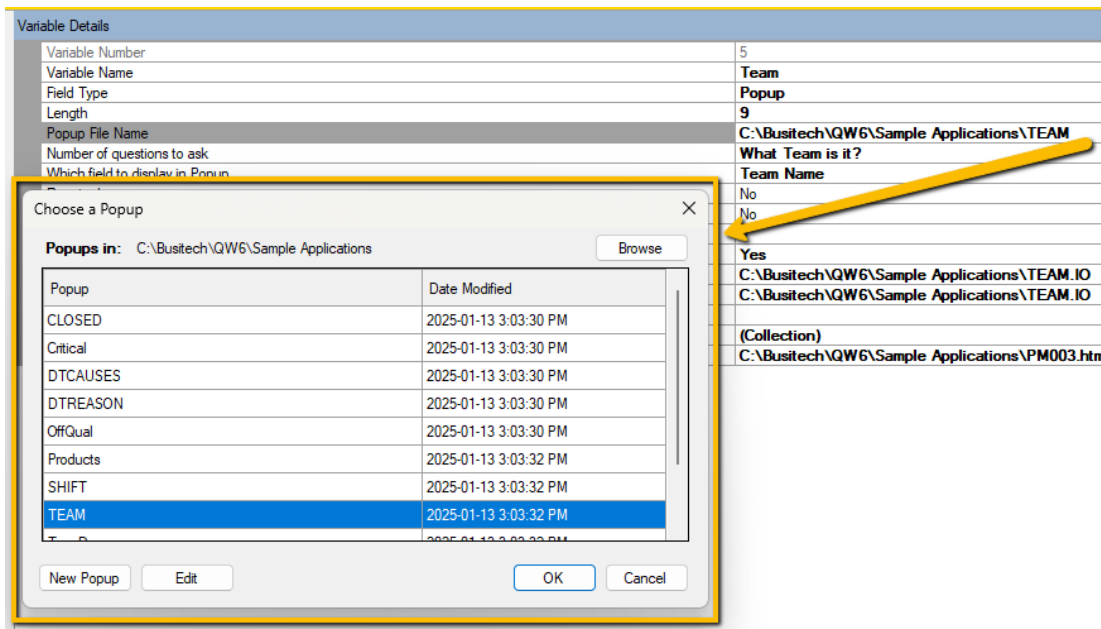
Error When Deleting Certain Variables – In some rare cases, deleting popup, lookup, or range variables in QW Admin caused an error preventing deletion. This has been fixed.

Audit Logs Not Displaying New Variable Name – The Admin audit log did not properly display new variable names for variable additions. This has been corrected to ensure accurate logging.

2025-01-14 | Build 6.1.161

New Features and Improvements

Improved Popup Selection Experience - The popup file selection interface in the QW Applications Editor Console (Maintain/Create Application) has been enhanced. This improvement provides administrators with a more intuitive and streamlined experience when selecting popup.

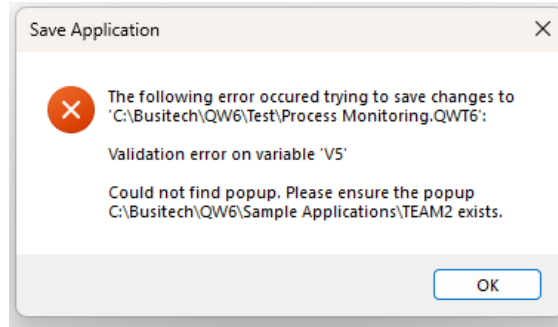


New popup selection interface

Resolved Issues

View Limits Reset on Admin Changes - Resolved an issue where custom limits set in views were unintentionally reset after administrators made changes to a QW application in the QW Application Editor Console (Maintain/Create Application).

Improved Popup Reference Error Messages - When a QW Application referenced missing popups, the error message displayed was unclear and unhelpful. A clearer message now identifies the problem and specifies the affected variable.



New error message

2025-01-09 | Build 6.1.160

New Features and Improvements

Expand Parent Folders - The Open File dialog now automatically expands all parent folders for the selected folder, streamlining navigation for users managing their QW applications with a folder-based structure.

Hide Popup Keys in Add/Edit Screen - The *Hide Popup Keys* setting now applies to the Add/Edit screen, ensuring a consistent user experience. To re-enable popup keys, navigate to **Tools > Settings**, and set *Show Popup Keys* to "Yes" under the General section.

Variable	Value	Variable Name	V5 - Team
1 Date YYYY-MM-DD	2025-01-09	Data Entry	Optional
2 Time HH:MM:SS	10:47:07	Data Type	Popup
5 Team	A TEAM	Units	
7 Batch Number		Sampling Plan	0
8 Batch Viscosity		What Team is it?	
9 Conveyor Speed (fpm)		A Team	
10 Oven Temp. (F)		B Team	
11 Weight Lane 1 (gm)		C Team	
12 Weight Lane 2 (gm)		D Team	
13 Weight Lane 3 (gm)			
18 Avg Diameter (cm)			
19 Diameter Range (cm)			
20 # Chips per Cookie			
21 Defects Found			
26 Comments 223			

Hide Popup Keys

Variable	Value	Variable Name	V5 - Team
1 Date YYYY-MM-DD	2025-01-09	Data Entry	Optional
2 Time HH:MM:SS	10:49:23	Data Type	Popup
5 Team	10 - A TEAM	Units	
7 Batch Number		Sampling Plan	0
8 Batch Viscosity		What Team is it?	
9 Conveyor Speed (fpm)		10 - A Team	
10 Oven Temp. (F)		20 - B Team	
11 Weight Lane 1 (gm)		30 - C Team	
12 Weight Lane 2 (gm)		40 - D Team	
13 Weight Lane 3 (gm)			
18 Avg Diameter (cm)			
19 Diameter Range (cm)			
20 # Chips per Cookie			
21 Defects Found			
26 Comments 223			

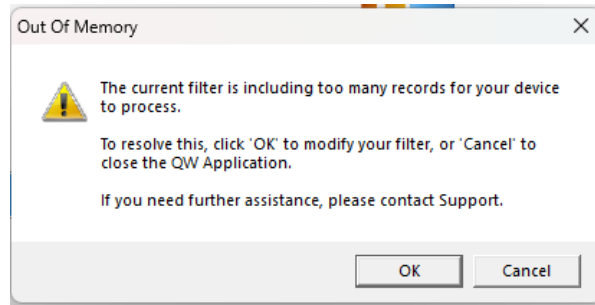
Show Popup Keys

Alarm Shortcut Key - A shortcut key (S) has been added for the Alarm tab, aligning with the shortcut functionality of other tabs.

Home Key Behavior - On the Logsheet tab, pressing the *Home* key now mirrors the behavior from QW5: it moves the cursor to the first unlocked column and automatically scrolls the view.

Improved Configuration Messages - Error messages in the Views Manager have been refined to provide clearer feedback on invalid configurations.

Out of Memory Warning - Users encountering out-of-memory errors due to inappropriate filters when processing large datasets will now see a warning instead of experiencing a crash. This allows users to adjust their filters and resolve the issue independently.



Resolved Issues

Filter Handling - Fixed an issue where certain filter combinations (e.g., date/time selection with variable value filters) unintentionally excluded all records.

Message Log Read-Only Error - Resolved an issue where QW Admin could not save message file contents if the QW Application message file was in a read-only state.

Delete Key on Popup Values - Fixed an issue preventing the *Delete* key and the right-click menu option from working for popup variable types on the Add/Edit screen.

Locked Variables Hiding Scroll Bar - Addressed a problem where setting too many locked variables in the Logsheet prevented the horizontal scroll bar from appearing on smaller resolution screens. When this occurs, the “Number of variables to lock” setting will now be ignored to ensure usability.

QW Move File Extension Issue - Fixed an issue in QW Move (accessible via QW Admin Utilities) that prevented proper archiving for applications with a `.QWT6` extension.

QW Move Default View Handling - Resolved an issue where archiving without selecting a specific view and using a record range could result in unexpected archive of records, depending on the default view configuration. Note: No data was being lost due to this issue.

2024-12-04 | Build 6.1.144

Resolved Issues

An error was resolved that occurred when loading some views with specific data signatures that either summarize data or use the hide empty variables option.

2024-11-23 | Build 6.1.142

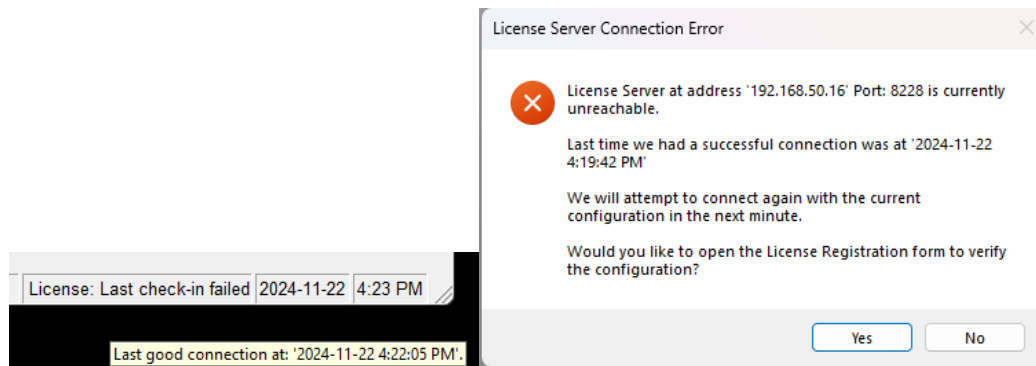
New Features and Improvements

Auto-Setting Popup Variable Length: QW Admin now automatically calculates and sets the minimum variable length for popups used in popup/lookup fields. If the length is too small, a warning prompts the admin to increase it to the required minimum.

Open QW Applications Directly from QW Admin: Admins can now open QW Applications they are editing directly from the file menu or a new toolbar button.



Enhanced Concurrent License Validation: Improved handling of degraded or intermittent network conditions. The system now retries connection attempts for up to five minutes before notifying users of license server issues. The status bar also updates license status during this retry period.



Resolved Issues

Record Editor Data Entry Optimization: Fixed an issue where rapid variable data entry caused fields to lag or become unresponsive.

Improved Record Saving Performance: Addressed slow record-saving under certain conditions.

Clipboard Paste Crash: Resolved a crash occurring when pasting data into the Record Editor.

Field Focus in Record Editor: Fixed a bug where focus wasn't set on the first field when adding a record by clicking the "Add" tab.

Checkbox Keyboard Navigation: Improved keyboard navigation for checkbox variables on the Record Editor screen to align with expected behavior found in QW5.

Edit Record Date/Time Issue: Fixed rendering problems with date/time-formatted text variables in the Edit Record view.

Unexpected Crashes or Closures: Resolved issues causing Quality Window to crash or close without error. The application now displays error messages, aiding troubleshooting.

Large Record Set Handling: Prevented crashes and rendering issues when loading large record sets. A best practice of limiting record counts to 100 is still recommended.

Report Tab Copy Crash: Fixed a crash caused by copying data via the "Edit -> Copy Data" command on the Report tab.

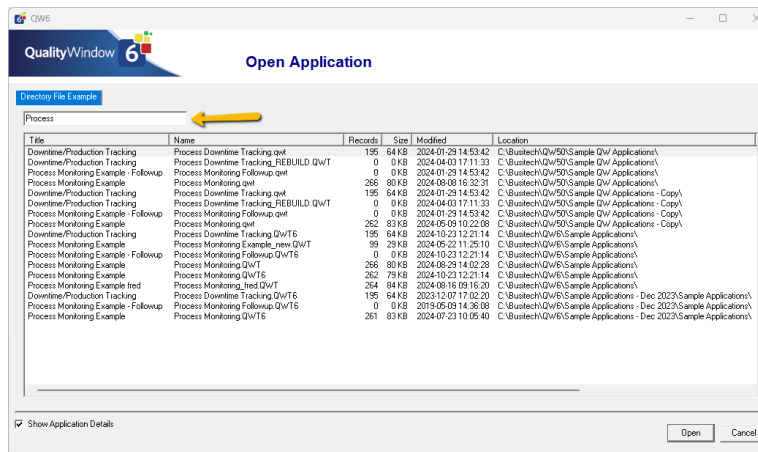
Control Chart Range Whiskers: Corrected an issue with range whiskers for @Pop-calculated variables on control charts.

Erroneous Admin Change Notifications: Fixed spurious admin update notifications in degraded network conditions.

2024-10-28 | Build 6.1.120

New Features and Improvements

File Filtering for Open Dialog and Directory Files - Responding to customer requests, we've added keyword-based file filtering for both the open dialog and directory files. This allows users to quickly find applications by using keywords and enables organizations to use Directory files as a security measure to restrict access to specific applications. The filtering applies to both the title and filename columns.



Last Folder Memory in Open Dialog - The open dialog in QW Workstation and QW Admin now remembers the last accessed folder instead of defaulting to the primary data directory. The folder reverts to the default data directory when Quality Window is restarted. Click the home icon to return to the default folder quickly.

Optimized Logsheet Performance - We've improved Logsheet loading speeds, particularly noticeable when handling applications with numerous variables and/or records.

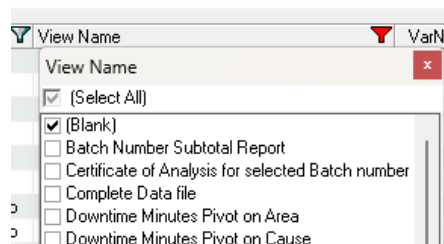
New Security Permission for Tools and Utilities – Customers wanted more control over the tools and utilities area of the QW Admin. We therefore added a new permission called “Access Tools and Utilities” which gives a consistent security model across all of the QW Admin capabilities.

Save Application View as option requires security permissions – QW Workstation now respects the permission “Manage Applications” for the File menu option “Save Application View as”. This was implemented to respect organizations that need to control who can create QW Applications.

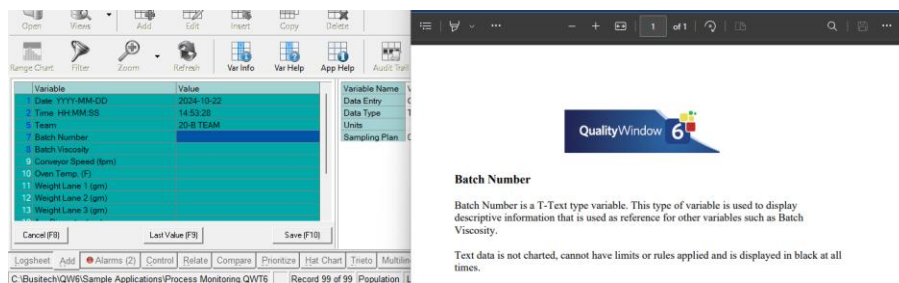
Automatic Audit Log Generation - QW Workstation now auto-generates log entries for applications lacking configured audit logs, eliminating the need to verify logging status manually in QW Admin.

Self-Healing for Mismatched Log Files - QW Admin identifies and corrects log files saved in incorrect locations or with unexpected filenames, ensuring audit logs are accessible and consistent with the application’s structure.

Spec Manager Filter Improvement - Blank values in Spec Manager now appear as “(Blanks)” during row filtering, enhancing clarity and aligning with industry standards.



Help Access on Add Screen - The Application and Variable help features are now accessible directly from the Add Screen, providing easy support while entering new data.



Resolved Issues

Column Header Visibility - Fixed an issue where column headers were cut off. The calculation now considers the largest width between the column header or variable character length.

Limit Colors in Large Record Sets not showing - Limit colors are now visible even when displaying

more than 33,000 records. (Note: for optimal statistical relevance, we recommend a maximum of 100 records.)

F-Key Unresponsiveness - Resolved an issue where the F-Key shortcuts (F8, F9, F10) occasionally became unresponsive on the Add Screen.

Spec Manager Auto Archive - When administrators modify applications, Spec Manager now automatically archives the state prior to changes.

Excel Data Pasting in Spec Manager - Addressed an issue where pasting from Excel into Spec Manager caused errors.

Focus Save Issue in QW Admin Grid View - Corrected a problem where in-focus changes were not saved in Grid View when using the toolbar save button.

Copy and Paste Hotkeys on Add Screen - CTRL+C and CTRL+V hotkeys have been restored. CTRL+SHIFT+V now pastes without formatting.

Relative Path Normalization - Enhanced file referencing by displaying and storing only filenames (instead of full paths) when files are in the same folder as the application, making application migration easier.

Validation Warning Crash - Fixed a crash that occurred when attempting to save changes after a validation warning.

Lowercase Extensions in Application Renaming - Resolved renaming issues with lowercase extensions (“qwt,” “qwt6”) in QW Admin.

Shared Configuration Permissions Handling - Quality Window now provides error messages instead of crashing when encountering misconfigured shared configuration permissions.

Rename Application Stability - Additional safeguards have been implemented to prevent renaming errors caused by concurrent user access.

Date Filter in Views - Fixed an issue with specific date filters failing to load in views.

Pasting in protected fields – Fixed an issue where users could circumvent protected fields by using the windows paste operation.

Resolved Issues

Fixes for Scripts

Current Record issue – in some rare cases when pulling the current record from the QW Repository object in the Quality Window API, the current record is not updated to the latest added

record causing issue with script record updates. This issue has been resolved as part of this release. If your team has questions about this update, please contact support@busitech.com.

2024-08-02 | Build 6.1.83

Resolved Issues

Fixes for Views

View File encoding issues – A rare issue was resolved where if special characters were in a variable file name, QW Admin would encode the files in a way that can create visual issues for variables in QW Workstation.

Remove saving of Units of measure in Views – The ability to edit units of measures in views was removed to simplify the user experience and prevent other issues related to inconsistent data.

Previous version reports not properly configured – An issue was resolved where when opening a view that was created in Quality Window 5 the report configuration was lost in some cases.

QW Administrator Fixes

Spec Manager Crashing – In 6.1.78 a new bug was introduced where spec manager module was not loading correctly for some users. This issue is now resolved.

Merge File issue – In 6.1.78 an issue was introduced where when opening merge applications that were created in QW5 references for the merge application were not properly loading forcing users to rebuild their merge applications. This issue has been resolved.

2024-06-27 | Build 6.1.78

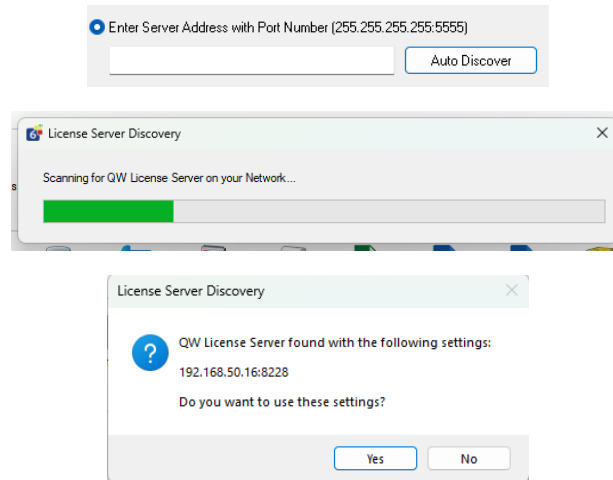
New Features and Improvements

Improved Integration with QW License Server

Improved responses for Concurrent Licensing – QW Admin and QW Workstation are now more efficient and clearer when interacting with the QW License server. This will remove unnecessary log entries on the License server and provide more detailed version information allowing organizations to leverage QW License Server to identify non-compliant devices with out-of-date versions. These updates also provide more feedback related to connection issues to the end user when trying to connect to QW License Server.

Auto Discover QW License Server – The licensing console in both QW Admin and QW Workstation now supports QW License Server Auto discovery capability, allowing users to scan for a QW License Server instance on the network by clicking “Auto Discover” button and not having to enter server details. This may not work in some network configurations.

Quality Window 6.1.400 - Release Notes



QW Admin

New Icon for QW Admin – The QW Admin icon has been updated to help users differentiate between QW Workstation and QW Admin.



Load Remote Configuration for shared configuration – In this release, The QW Admin - Shared configuration console can now initiate a download of the shared configuration settings from QW License server if set for a product item. This can be completed by click **File -> Load Remote Configuration**.

Removal of Debug Tracing – It was determined that the Debug tracing tool was no longer required as part of the QW Admin experience due to performance impacts. This support capability is still available through other tools that are available in the platform.

Added Email Server settings – In organizations that have internal mail servers (SMTP servers) that don't require user credentials or use self signed certificates will now be able to configure their email configuration settings to support these SMPT configurations. These settings should only be used with support from your IT departments.

New Setting	Description
Ignore certificate errors	Enable this setting if your IT department instructs you that the SMPT server uses a self signed certificate. This should only be set on trusted SMTP servers.
SMTP server does not require credentials	Enable this setting if your IT department instructs you not provide username and password credentials when sending emails from Quality Window through an internal SMTP server.

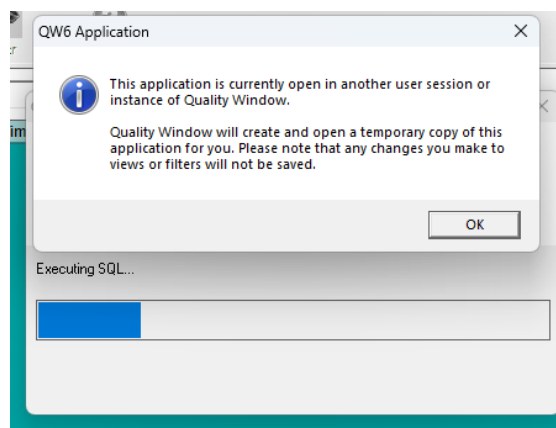
QW Workstation

Improved labeling of Shared Configuration Features – in an effort to improve the clarity and purpose of QW workstation’s ability to request an update for shared configuration from the QW License server the following label changes have been made

Old Label	New Label	Location	Function
Update Shared Config	Download Shared Configuration	Tools Menu	Initiates a download latest shared configuration settings from the QW License Server if configured.
Auto Update Shared Config	Use Remote Configuration	Tools -> Settings dialogue	When set to yes, forces QW Workstation to update its shared configuration from the value on the license server every time it is opened.

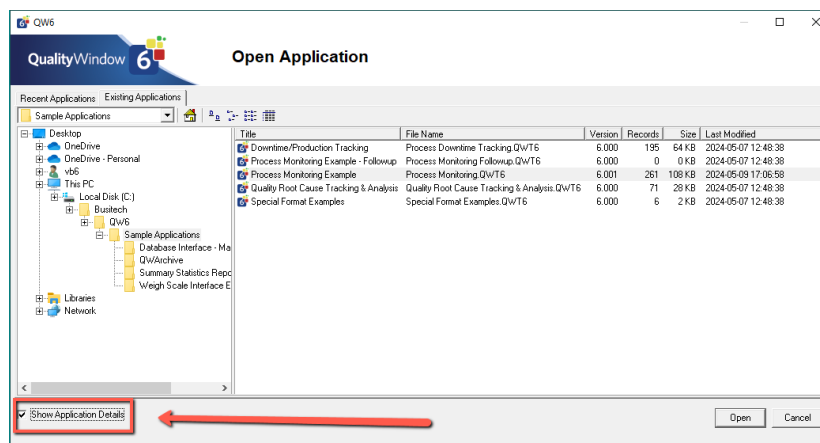
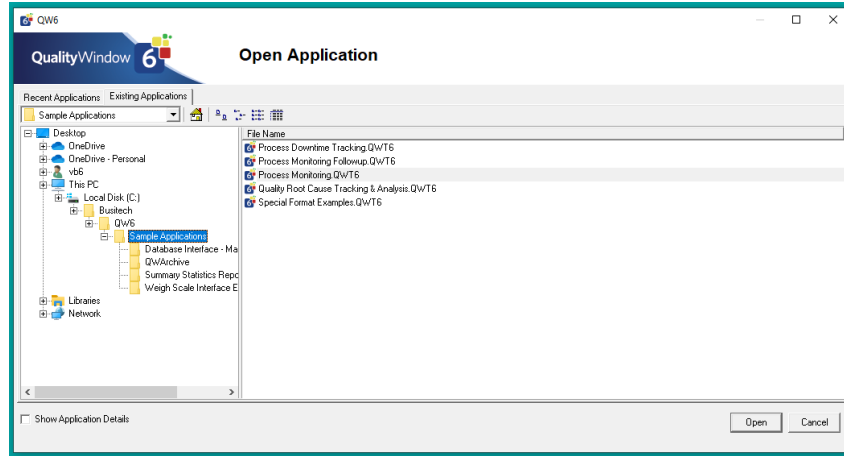
Removal of Debug on startup – It was determined that the Debug tool was no longer required as part of the QW Admin experience due to performance impacts. This support capability is still available through other tools that are available in the platform.

Ability to open Locked QW Applications – QW Applications that are integrated to an external data source such as excel files or SQL databases are locked when opened by a user. This prevented other users from opening the same application due to how Quality Window handles these external data sources. In this version, when one of these types of QW Applications are locked by a user, subsequent users will be permitted to open a temporary copy of the QW Application. When opened in this temporary mode, any changes to views will not persist after closing the application due to it being a temporary copy.



Improved Open Application performance – In an effort to continue to address performance issues in degraded network conditions, the open application dialog is now even simpler and only shows the application file name and no longer displays file size, file path and modified date/time. To view application details just check the “Show Application Details” checkbox to display fields.

Quality Window 6.1.400 - Release Notes



Resolved Issues

QW Workstation

Log in prompt passing extra enter/return keystroke to Add screen – An issue was resolved where when a user is prompted for credentials when adding/editing a record, an extra enter key is sent to the application which can impact the editor where values can be auto selected in popups.

Subscript out of range error – In rare cases when users are opening multiple QW applications, a subscript out of range error occurs which has been resolved with this release.

Focus issue after resuming Application – When resuming QW Workstation in the middle of an add or edit of a record, Quality Window would require the user to re-enter a field that was already being edited. In this release when resuming the application your focus field will be preserved allowing users to continue interacting with the field.

2024-05-14 | Build 6.1.47

Introducing Seamless Quality Window 5 support

Quality Window 6 now supports Quality Window 5 data format seamlessly and now allows customers to install Quality Window 6 and immediately transition without the need to migrate their data. See [Quality Window 6.1 Upgrade guide](#) for further details on the upgrade.

For customers already using Quality Window 6, the only difference this update will have on your experience is quality window data files will now use the quality window 5 file extensions by default. Any existing quality windows 6 files will continue to work as is with their existing file extensions without issue.

Workstations users can now open Quality Window 5 files in Quality Window 6 without issue, benefit from supported software and Quality Window 6's new capabilities.

Administrators, users can manage their Quality Window 5 applications immediately without worrying that they will break compatibility with Quality Window 5. The only exception to the seamless experience is scripts and macros. Please see our Upgrade guide for further details.

What does this mean for existing Quality Window 6 customers?

There should be no impact to existing customer deployments. QW6 customer will notice we are no longer saving files with the QWT6|QWD6|QVM6 ect... extensions and this version is now saving the same extensions as QW5.

The exception to this is the global script, for reasons related to protecting the existing QW6 customers, this is left unchanged at QWX6.

Any existing application with the 6 series extensions will continue to work as is and do not require migration or special handling.

Script Updates

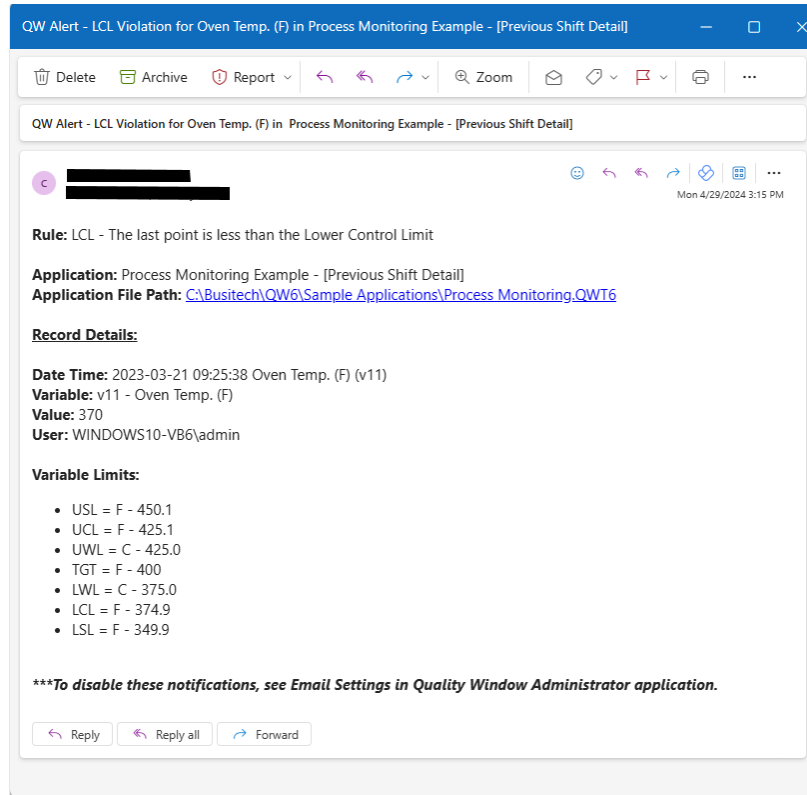
As an admin of existing QW6 deployments, if any of your scripts reference older references, you will be prompted to upgrade them when the application is opened in admin. It is recommended to do this, though not critical. See section below on [Script Editor improvements](#) for more information.

New Features

Email Notifications for Rule Violations

In this version Busitech has added a new capability that allows organizations to get email notifications when a Rule violation occurs on a record update. See [our Email Notification Administration Guide](#) for all details about this new feature.

Quality Window 6.1.400 - Release Notes



QW Workstation Improvements

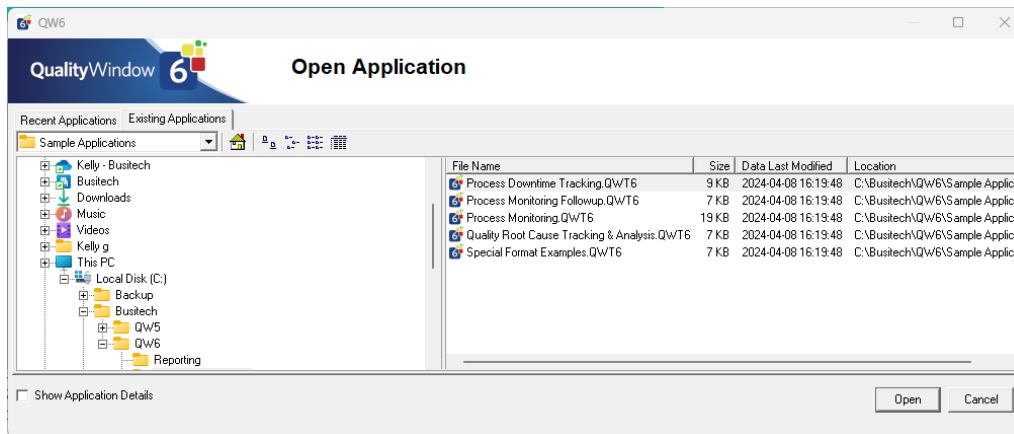
Performance improvements

Busitech has invested considerable time to improve the performance of Quality Window and in some cases, users may see an increase of close to 30% in load times.

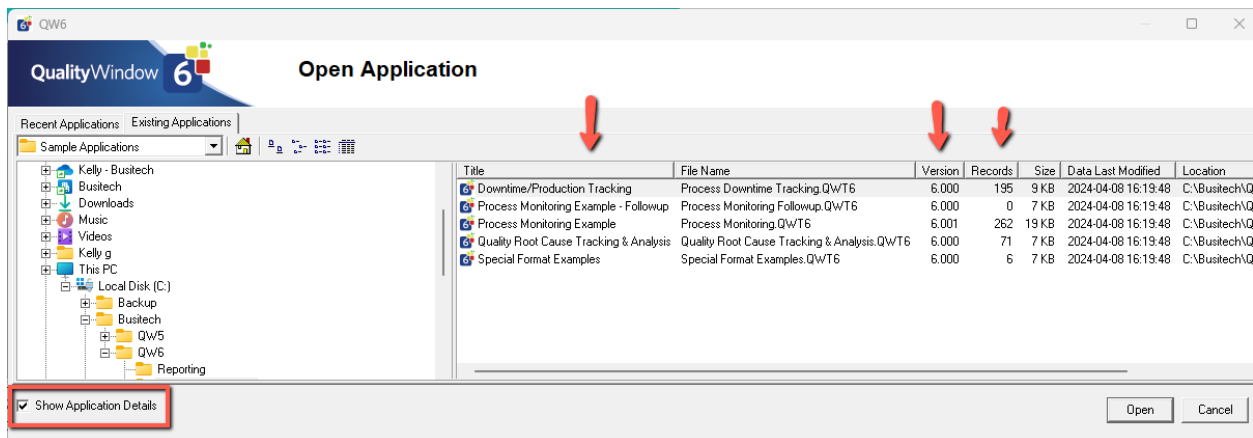
Open Application Dialog

Open Application Performance improvements – In some customer configurations where a network folder has hundreds of applications, the open application dialogue can take a long time to load or even lock up. Even though Busitech would guide customers towards more organization of their applications as a best practice, especially on a network, we have removed the application title unless the user has the show application details checked which will decrease the network load when on this screen. See screenshots to see the difference between the two modes.

Quality Window 6.1.400 - Release Notes



VS



QW Admin

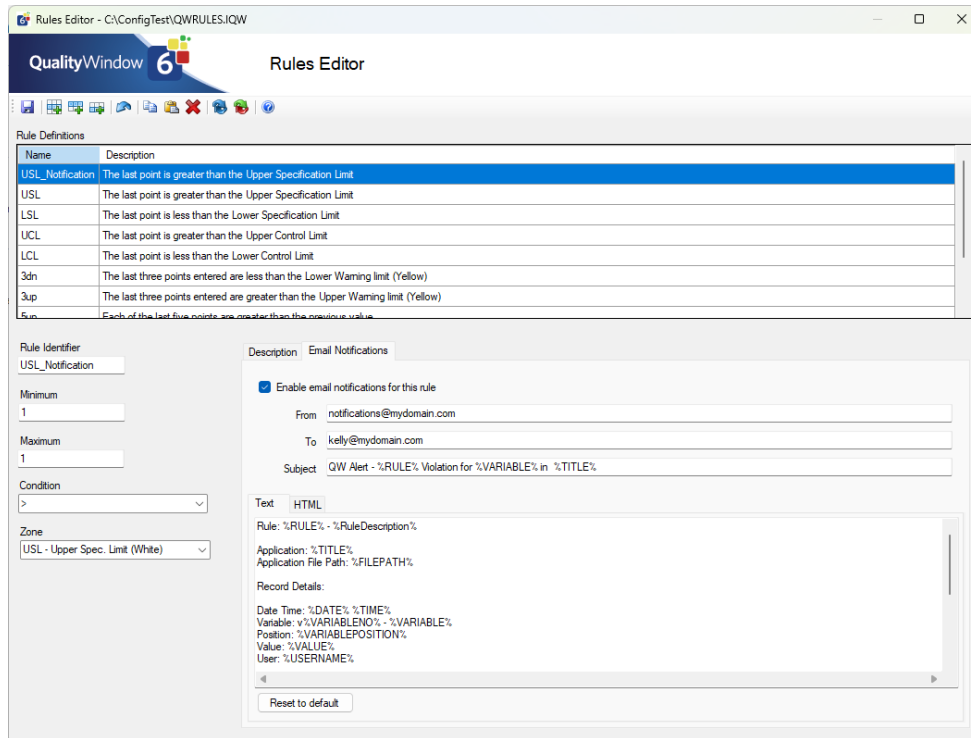
Manage Applications Improvements

Improved Deleting referenced Variable Experience – When deleting a variable that is referenced elsewhere in the application (calculations, lookup, general setting etc.) the following experience improvements have been added:

1. To ensure clarity, the deletion of multiple variables was removed. Administrators now must delete 1 variable at a time.
 - a. If the removal of this feature is not desirable due to your workflow. Please provide feedback at support@busitech.com
2. When a variable that is referenced is deleted, an error message will be displayed indicating the variable is referenced and where it is referenced. This allows administrators to go and update the reference.
3. When a variable that is referenced is deleted the variable reference panel will automatically be enabled allowing the administrator to view all references for the selected variable.

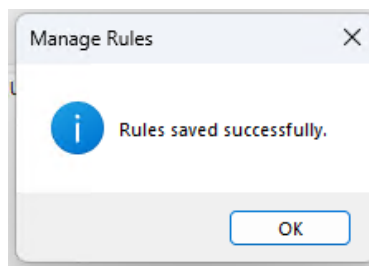
Manage Rules Improvements

Email Notifications - In this release, notifications were added to rule definitions, enabling administrators to optionally configure email notifications for rule violations. . See [our Email Notification Administration Guide](#) for all details about this new feature.



New Rules Editor Console

Save Rules confirmation – a save confirmation dialog was added notifying administrators that rules configuration has been successfully saved.



Save Rules Confirmation

Rule Identifier Locked – It was discovered that when editing rules, if a rule identifier is edited to a different value, that there may be undesirable consequences based on customer feedback. To avoid confusing impacts, Busitech chose to make Rule Identifiers read-only once set. If an administrator needs rename a rule, they should delete the rule and create a new one.

Quality Window Security Improvements

Manage Configuration Permission – In this release, a new permission was added to the QW Administration to provide more governance options to customers. The new “Manage Configuration” permission limits access to the following Shared Data and Scripts administration consoles:

1. Directory Files
2. Manage Units
3. Manage Statistics
4. Manage Rules
5. Script Editor
 - a. This will only limit editing Global and folder level scripts and does not prevent application specific script editing.
6. Shared Configuration

With this update, the following administration consoles have been moved to the applications section to aid with usability and clarity for administrators:

1. Manage Popups
2. Spec Manager

The Query License Server console was moved to the Tools and Utilities section to further align the sections with specific security permissions.

The following table describes which permission is required for each administration console

Section	Option	Permission Required
Applications	Maintain Application	Manage Applications
Applications	Create Application	Manage Applications
Applications	Manage Popups	Manage Applications
Applications	Spec Manager	Access Spec Manager and Manage Applications
Shared Data and Scripts	Directory Files	Manage Configuration
Shared Data and Scripts	Manage Units	Manage Configuration
Shared Data and Scripts	Manage Statistics	Manage Configuration
Shared Data and Scripts	Manage Rules	Manage Configuration
Shared Data and Scripts	Script Editor	Manage Configuration
Shared Data and Scripts	Shared Config	Manage Configuration
Shared Data and Scripts	Security Administrator	Manage Security

**NOTE: if no defined user is given a specific permission than the permission is considered not enabled and all users inherit the permission.*

Support for NLog logging - To improve traceability, Busitech has added initial support for [NLog](#). This will allow customers in a regulated industries to connect Quality Window Logging to external log consuming applications. This implementation does not include transaction or administrative logs in this release, but will in a future release. [Contact Support](#) if you want more details.

Transaction Log File now static – Due to customer feedback and issues where customers did not have transaction logging properly configured or having multiple QW Applications logging to the same file creating corruption or mismatched entries, Busitech has made Transaction log files static to the same file name as the QW Application and in the same folder. Administrators will be notified of this change when it impacts an application.

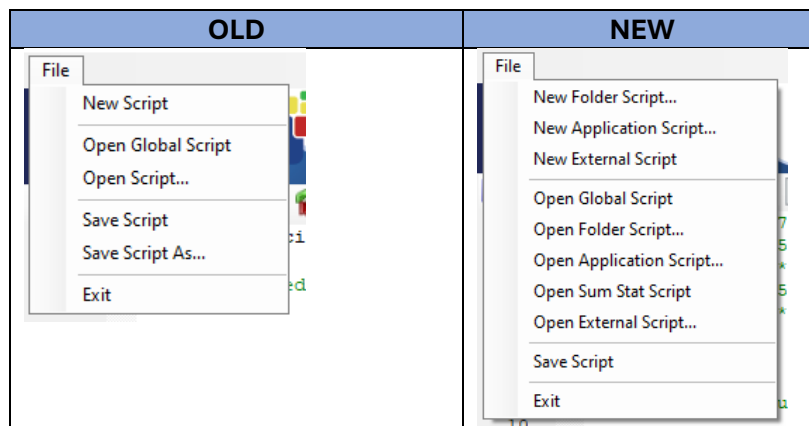
Quality Window Script Editor Improvements

As part of this release, the Quality Window Script Editor has undergone many improvements that apply to both the global script editor and the Application script editor to make it easier for script developers.

Auto Comment on Script Edits - Now when an administrator edits a script in the script editor a comment is added to the top of the script indicating who updated a script and when.

Example: ' [2024-04-20 4:27:00 PM] - Modified by Kelly On machine KellyLaptop

Updated File menu items – The Script Editor’s file menu has been updated to make it easier for common script tasks.



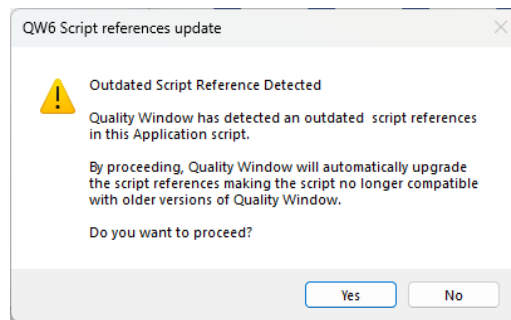
The below table describes each of the file menu options.

Menu Item	Description
New Folder Script	Prompts user to choose a folder and a new Folder Script (<i>QWScript.qwx</i>) will be created in that chosen folder and be used by any application that is stored in this folder when saved. <i>*If a script already exists, the user will be notified of the existence and the existing script will be loaded instead.</i>
New Application Script	Prompts user to select an application and a new script created and added to that application (<i><applicationFileName>.qwx</i>) when saved. <i>*If a script already exists for the application, the user will be notified of the existence and the existing script will be loaded instead.</i>
New External Script	Will create a new external script. User will choose filename when saving the script using the “Save Script” menu option.

Quality Window 6.1.400 - Release Notes

	<i>*External scripts are scripts that don't interact with an application directly instead are used with other tools such as QWAdd.exe.</i>
Open Global Script	Opens the currently configured global script based on your shared configuration settings.
Open Folder Script	Prompts user to select a folder, if a script exists, it will be opened in the editor.
Open Application Script	Prompts user to select an application. If Application has a script, the script will be opened in the editor.
Open Sum Stat Script	Opens the Sum Stat script in the editor.
Open External Script	Prompts the user to select an external script on the file system.
Save Script	Saves the script to the appropriate location.
Exit	Exit's Script Editor

Auto Update of QW5 Script References – With the added seamless Quality Window 5 support, when an administrator opens any script with QW 5 references, the Script Editor will prompt the user with an “Outdate Script Reference Detected” message allowing the user to optionally auto update the script to the latest Quality Window 6 references.



Yes - If yes is selected, all references in the table below will be updated to their Quality Window 6 equivalent. A comment will also be added to the top of the document indicating the script was migrated. The added comment should not be removed as it also improves performance as it will tell Quality Window to not have to support QW5 references.

*****Note: Once upgraded, these scripts will no longer work and may error out in Quality Window 5. If QW5 support is needed while you upgrade, select “No” option until your entire deployment is upgraded to Quality Window 6.**

Example comment:

```

' *****
' [2024-04-03 4:15:22 PM] #QWSCRIPT:V6_REFERENCES_UPDATED# - Script references automatically updated by kelly on machine KELLYSURFACES (do not remove)
' *****

```

No - If no is selected, the script will remain unchanged. Quality Window will still work with the old references because the product magic replaces Quality Window 5 references with the updated QW6 versions.

Quality Window 5 Reference	Quality Window 6 Reference
QWAccessClass	QWAccess60
QWAccessClass.QWAccess	QWAccess60.Connection
QWTool	QWTool60
QWTextClass	QWText60
QWLogView	QWLogView60
prjQWSelect	QWSelect60
QWLicense	QWLicense60
QWRep	QWRep60
QWComSrv	QWComSrv60
QWSQL	QWSQL60

Resolved Issues

QW Workstation

Add Screen Fixes

Named the Add screen, this reference infers the user experience for add, edit, copy and insert.

Add Screen focus issue – An issue was resolved where in some cases after user get a validation warning on the add screen, they were unable to properly regain focus to the variable to enter a corrected value.

Add Record focus issue – When Add Record function was initiated, the focus would be placed on the selected column on the logsheet instead of the first editable field. This has been resolves.

Add Screen Missing Highlight – In rare cases, the current variable would have focus but the highlight would not be shown to the user which is now fixed.

Add Screen Subscript out of Range – In some cases when multiple QW applications were opened a bug was resolved that would throw an error on add or edit screen, forcing the user to restart Quality Window to clear the error.

Add Screen Required Indicator color issue – The add screen colors that render on the left side of variables indicating if a variable should require a value based on the required and sampling plan properties was not working correctly and has been fixed. See below for table indicating how it works.

Required	Sampling	Has Value	Color	Definition	Mandatory
Yes	0	No	Red	No sampling.	Yes
Yes	1	No	Red	Always sample.	Yes

Quality Window 6.1.400 - Release Notes

Yes	> 1	No	Red	Sampling value requires user to enter a value.	Yes
Yes	> 1	No	Blue	Sampling value dictates that the user is not required to enter a value.	No
No	0	No	Blue	No sampling, not required,	No
No	1	No	White	Always sample.	No
No	> 1	No	White	Sampling rule says you should enter data.	No
No	> 1	No	Blue	Sampling rule say you do not need to enter data.	No
Any	Any	Yes	Blue	Entry rule fulfilled	N/A

New Line characters inserted in add screen – It was found that users that user could insert invalid new line characters into variable value by pasting from clipboard, using the CTRL+ENTER key combination or using SHIFT + ENTER key combination. This would result in a malformed transaction audit file and other symptoms. With this release it is no longer possible.

Edit Smart Focus broken – in the last release of Quality Window, when initiating an edit record operation, the user wasn’t automatically placed on the variable that was selected in the logsheet. The feature is now working as expected.

Jumping Variables after entering values for an Average Variable Type – When users were using the keyboard to enter the values for variable of type “Average” the variable focus would skip after completing the entry. This issue has been resolved.

Popup Crashing when adding records – In some rare cases where Popups were improperly defined, quality window would crash when adding records. The crash is now being prevented and an error is being displayed to the user indicating the detected issue with the popup definition.

Logsheets Fixes

Column width issue – If an admin defined a variable to have a length of 1, the column width was too small to read the variable name. This issue is now resolved and will render columns ensure that the variable name is always readable.

Trieto Screen Fixes









Improper rendering of charts for Popups – In some cases on the Trieto screen, the charts were not charting correctly when QW workstation is configured to not show popup keys. Now the charts will render correctly regardless of the Show Popup Key setting.








Open Application Dialog Fixes

Incorrect rendering of dialog tabs – In some cases Quality Window would render the tab contents incorrectly on the open application dialog where the “Existing Applications” and the “Recent Applications”. These tabs now work as expected.

QW Admin

Updated Icons – The QW Admin experience was updated to remove generic icons in favor with a more relevant icon.

QW Admin Feature	New Icon
Spec Manager	 Spec Manager
Shared Config	 Shared Config
Email Settings	 Email Settings
SumStat Reporter	 Sum Stat Reporter
Excel to QW Importer	 Excel to QW Importer
Backup Application(s)	 Backup Application(s)
Restore Applications	 Restore Application
Application Checker	 Application Checker

QW Admin Feature	New Icon
RS232 Administrator	 RS232 Administrator
Version Checker	 Version Checker
Debug Tracing	 Debug Tracing
Application Documenter	 Applications Documenter
Batch Application Checker	 Batch Application Checker
Batch Move Utility	 Batch Move Utility
IO Test Utility	 IO Test Utility

Manage Applications Fixes

File Pack menu option not working as expected – The File Pack option in QW Admin Manage Application console would open File Pack instead of just packaging the current application. This issue has been resolved.

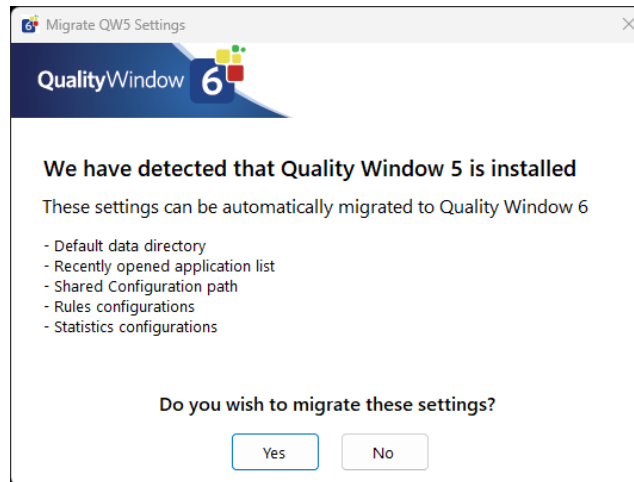
Manage Units Fixes

Toolbar not always working – It was discovered that in some cases the toolbar ceases to work in the Manager Units admin console. The toolbar now works as expected.

QW Installer Fixes

Multi Lingual windows user groups - An issue was resolved where if default windows user groups were translated due different language edition of windows, permissions were not properly set.

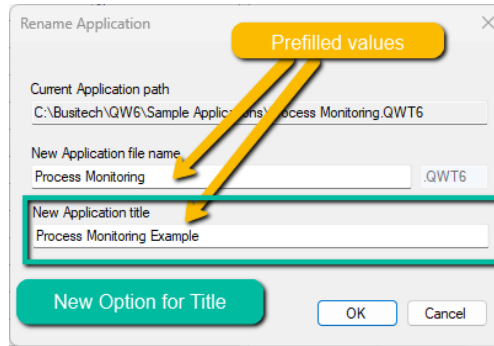
QW5 Configuration Migration – In an effort to help with upgrade to Quality Window 6.1, the installer has a new post install process that prompts the user to migrate these settings if QW5 is detected on the device. See [QW 6.1 Upgrade Guide](#) for more information.



2024-01-30 | Build 6.00.735

Rename Application Improvements

- **Rename Application Title** – We’ve improved the ‘Rename Application’ feature in the Quality Windows Administrator. Previously, administrators had to remember to rename the application in the general application settings as the title was not an option in the initial rename operation. Now, administrators can easily rename the application title as part of the initial rename operation.
- **Rename Application Value Prefill** – As part of the improvements to the ‘Rename Application’ feature, we’ve made it easier for administrators to rename applications. Now, the title and file names are pre-filled with the current title and file name during the renaming process.



Administration Logging Improvements

- **Improved Log Entry for 'Save Application As'** – We've enhanced the log entries for the 'Save Application As' function. Now, when an administrator saves an existing application under a new name and/or location, the log entry clearly indicates that the new application was created from an existing one. Additionally, we've ensured that the logs of the existing application are preserved by copying them over during the 'Save Application As' process.
- **Improved Log Entry for 'Renamed Application'** – We've also improved the log entries for the 'Renamed Application' function. When an administrator renames an application, a new log entry is added to indicate that the application has been renamed.
- **Improved Log Entries for 'Chart Screen Options'** – We've made enhancements to the log entries for changes to application chart screen options. These entries were previously unclear, but have now been improved for better clarity.

Transaction Audit Logging Improvements

- **Expand/Collapse Nested Rows** – We've added a new Transaction Audit feature to the Quality Window workstation. This feature allows users to easily expand and collapse all nested records using new toolbar buttons.
- **Row Highlighter** – We've enhanced the user interface by adding a blue highlight to selected rows. This feature facilitates analysis in applications audit records that require horizontal scrolling.

Quality Window 6.1.400 - Release Notes

Audit Log - Process Monitoring Example

File Edit

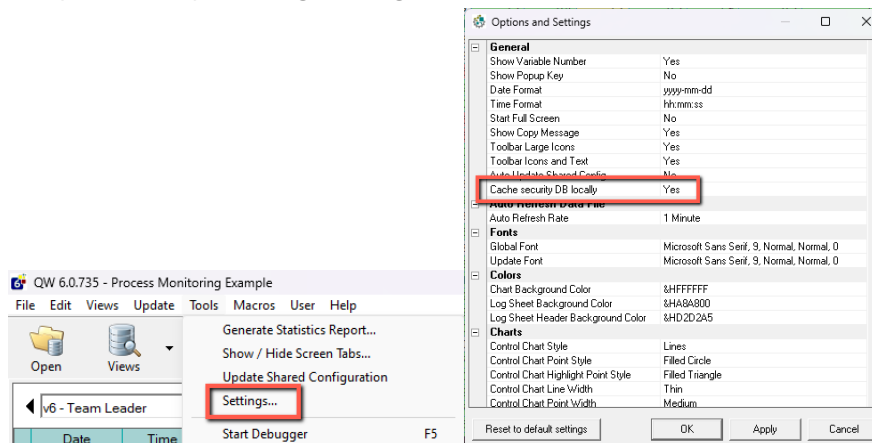
Expand and Collapse all rows buttons

Row Highlighter

Date	Time	Shift	Start	Team	Team Leader	Batch Number	Batch Viscosity	V9	V10	V11	V12	V13	Weight Line 3	Weight Av
YYYY-MM-DD V1	hh:mm:ss V2	V3	V4	V5	V6	V7	V8	V9	V10	V11	V12	V13		
2023-03-21	02:15:39	30	11:30P TO 7:30A	10-A TEAM	FRED	1349	1007	156	400	6.1	6.2	4.8		
2023-03-21	02:15:39	30	11:30P TO 7:30A	10-A TEAM	FRED	1349	1007	156	400	6.1	6.2	4.8		
2023-03-21	02:15:39	30	11:30P TO 7:30A	10-A TEAM	FRED	1349	1007	156	400	6.1	6.2	4.8		
2023-03-21	02:15:39	30	11:30P TO 7:30A	10-A TEAM	FRED	1349	1007	156	400	6.1	6.2	4.8		
2023-03-21	03:14:59	30	11:30P TO 7:30A	10-A TEAM	FRED	1349		140	393	5.8	6	6		
2023-03-21	03:14:59	30	11:30P TO 7:30A	10-A TEAM	FRED	1349		140	393	5.8	6	6		
2023-03-21	03:14:59	30	11:30P TO 7:30A	10-A TEAM	FRED	1349		140	393	5.8	6	6		
2023-03-21	03:14:59	30	11:30P TO 7:30A	10-A TEAM	FRED	1349		140	393	5.8	6	6		
2023-03-21	03:14:59	30	11:30P TO 7:30A	10-A TEAM	FRED	1349		140	393	5.8	6	6		
2023-03-21	04:18:19	30	11:30P TO 7:30A	10-A TEAM	FRED	1349	901	158	409	6.2	6.8	6.4		

Security Improvements

- Network Security Caching** – This feature is designed for scenarios where customers experience performance issues related to Quality Window Security on their networks. In this version of Quality Window, administrators have the option to enable caching. This function temporarily stores security data on workstations, potentially improving performance. However, it's important to note that if user accounts are altered, clients using the caching feature will need to restart their Quality Window applications to reflect the updated security changes. To enable this feature, in Quality window workstation navigate to Tools → Settings and enable the “Cache security DB locally” setting in the general section.



Resolved Issues

- QW Batch Move Utility QW5 template issue** – We've resolved an issue where an error was occurring when opening Quality Window 5 applications in the QW Batch Move Utility.
- QW Merge Warning Dialog Issue** – We've addressed an issue where a Windows update affected the display of the QW Merge warning dialog. This issue occurred when a saved merge

application attempted to load an application that had been modified since the last save. We've now updated the warning message to ensure it displays correctly.

- **Application Renaming Issue** – We identified a problem where renaming an application was causing an error under certain circumstances. This issue has now been resolved.
- **Directory Files Help Issue** – We've resolved an issue where the help link for the Directory Files feature was not directing users to the correct knowledge base article.

2024-01-08 | Build 6.00.734

- **Popup Editor Lost and Locked:** Resolved an issue where the Popup Editor would become unresponsive and lock the Quality Window Administrator application.
- **Extra un-needed Audit log Entries when Saving an application:** Removed unnecessary audit log entries that were added when saving an application.
- **Cannot save Application due to Temp file Conflict:** Fixed a problem where temporary files in the Windows temp folder prevented saving applications.
- **Security Editor Help Not Opening:** Corrected the issue with the non-functioning Help button in the Security Editor.
- **Report Type Options Duplicated:** Addressed the duplication and missing report types in QW Administrator Manage Applications.
- **Application Versioning truncating Trailing Zeros:** Resolved an issue with application version numbers misleadingly truncating trailing zeros.
- **Chart Screen Options Reversed:** Fixed incorrect property updates in Chart Screen Options.
- **Cannot Save Application if View File Was Deleted:** Resolved a blocking issue related to saving an application when its view file is deleted.
- **Directory Files Editor Help not opening Help:** Re-enabled help in the Directory Files Editor with access to a video tutorial.
- **File Version is Inaccurate in Auto-Generated Change Message Log:** Corrected the file version display in the auto-generated change message log.
- **Security Options not always saving in Security Administrator:** Fixed a rare issue where certain security options were not saving correctly.
- **Active X error when adding or editing records to Application:** Fixed a bug causing crashes when adding or editing records in Quality Window Workstation.
- **Opening via Directory File mode throws Error:** Resolved a runtime error when opening an application via Directory File mode.
- **Global Macro “Display All Control Charts” not showing Control charts Properly:** Addressed an issue with the “Display All Control Charts” macro not rendering control charts correctly.
- **Prevent updating QW License Server with invalid shared Configuration:** Fixed an issue where invalid configuration values could overwrite valid ones on the Quality Window License Server.
- **Scripting: QWRepository.CurrentRecord Function returning incorrect value:** Resolved an issue with the QWRepository.CurrentRecord function returning incorrect values in custom scripts.