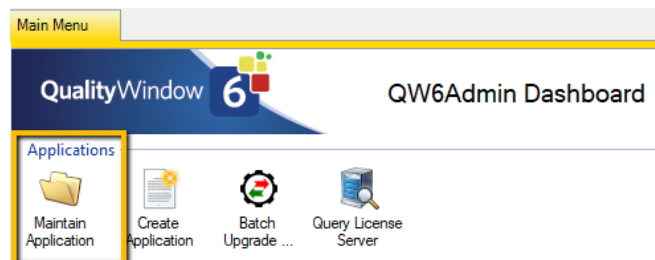


Important considerations when upgrading:

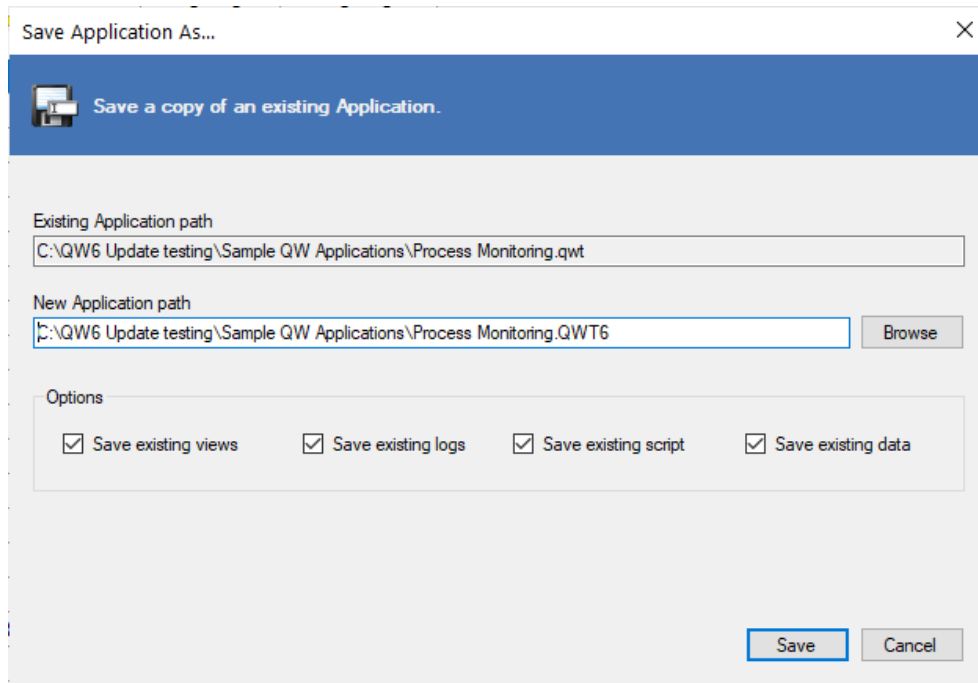
- QW6 can be installed on the same workstation as QW5 with no conflicts. Very useful for the early testing of the QW6 product.
- Upgrading QW5 to QW6 does not affect the QW5 applications. The QW5 applications remain untouched and can be accessed at anytime.
- It is highly recommended that you place the upgraded QW6 applications in a new directory to avoid any confusion for end users.
- The process of upgrading applications to QW6 is a good time to review the volume of data in your existing QW5 applications. The QW5 Utilities Move tool can be used to Archive older data and in turn making the applications smaller and more efficient for upgrading. You should review your regulatory requirements for historical data but understand you can access older data that has been archived. Also you can use QW6 to view QW5 applications if required in the future.
- There are two ways files like Popups and Input/Output files can be referenced in a QW application:
 - **Absolute** – which means the files have a full path to a location other than where the QW applications reside Example C:\QWPopup Files. These file references will be maintained in the new location of the Upgraded QW6 applications.
 - **Relative** – which means the same location as to where the QW5 Applications currently are located. These file references will have any file/path removed making them the same location as to where the QW6 Applications will be located.

There are two methods for Upgrading QW5 applications to QW6:

1. Use the QW6 Admin Maintain Applications tool to load an individual QW5 application. This method is great for the initial testing of the QW6 version with existing QW5 applications.



By selecting the Save Application option you will be prompted with the screen below.



You will have the option to save the application in the new QW6 format with these options:

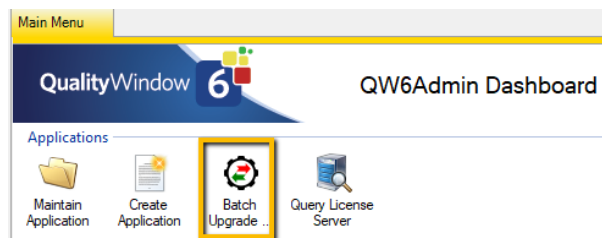
- Save existing Views
- Save existing Log files
- Save existing Script files
- Save existing Data

By default all options are selected.

Note: Remember to save the new QW6 application to a new directory!

2. The second options is to use the QW6 Admin Batch Upgrade tool.

This will allow to select QW5 applications by directory and related sub-directories to upgrade them in a Batch mode to the QW6 format.



Important Notice:

The Batch Upgrade utility has been streamlined to complete the upgrade process as quickly and efficiently as possible. Depending on the number of QW5 applications to upgrade and the

volume of data in each application will affect the time to complete the upgrade process. The Upgrade utility displays a graphical progress indicator as it proceeds.

Recommendations:

- Run the Batch Upgrade process from the Server where the QW5 applications reside. This will decrease the network traffic and make the process more efficient.
- Pick a sample of QW5 Applications to get a sense of the time required to perform the Upgrade process.
- You might consider upgrading applications by grouping like Line, Product or Customer.
- Select QW5 applications to be upgraded that are not currently in use. You should also understand that users can continue to access/use QW5 applications during the upgrade process, but performance may be affected. Also upgrading applications currently in use may result in missing data.

Note: The QW5 applications will not be affected by the upgrade process.

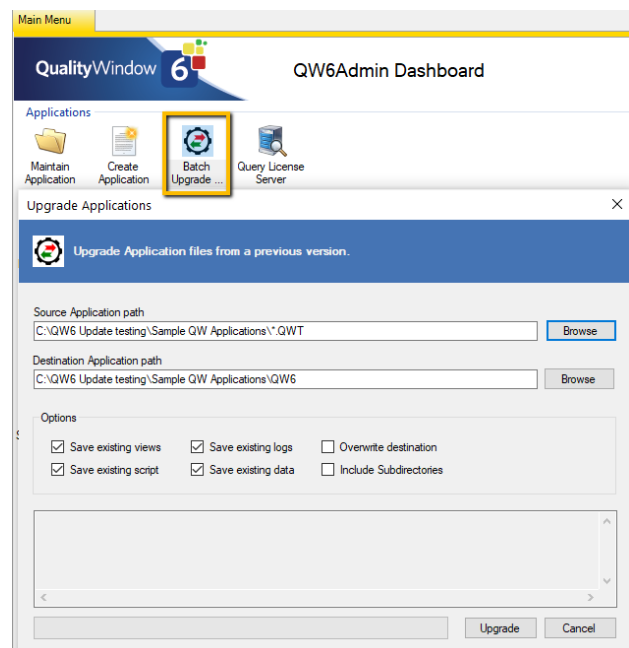
Use Browse to navigate to the location (Source path) for the QW5 Applications to be upgraded.

Use Browse to Select the Destination location where the upgraded QW6 applications are to be placed.

Note: By default, a directory called QW6 will be created under the Source Location of the QW5 applications. Consider the best location for the new QW6 applications – it is recommended to select a location apart for the existing QW 5 applications to avoid confusion by end users.

Options:

- Save existing Views.
- Save existing Scripts.
- Save existing Logs.
- Save Existing Data
- Overwrite existing destination – if the applications already exist at that location.
- Include subdirectories under the selected source directory.

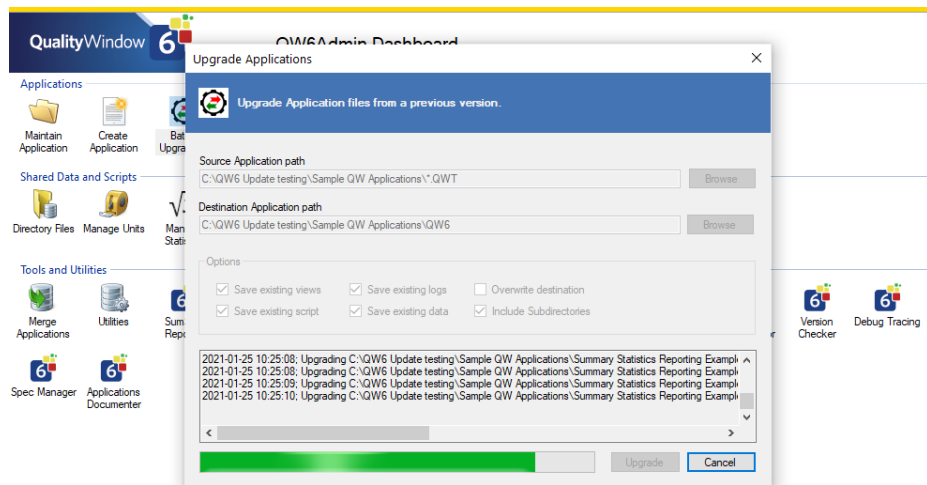


Note: Both the Overwrite Destination and Include Subdirectories options are not selected by default.

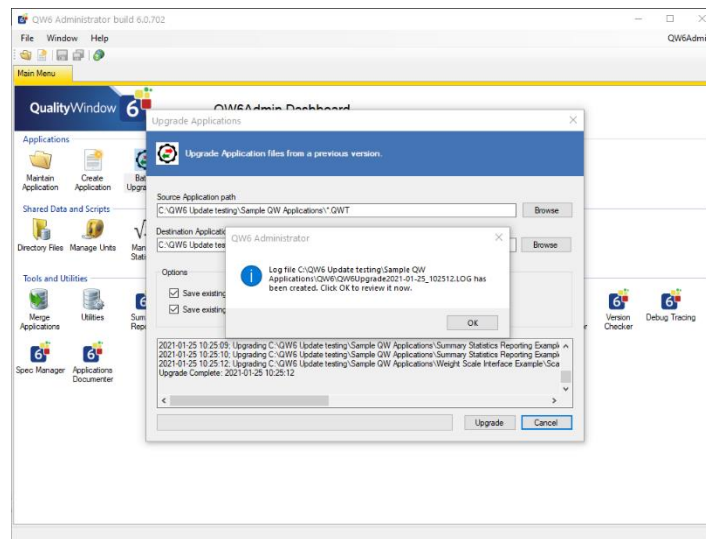
To start the Upgrade Process, Click on the Upgrade button.

Remember the time to perform upgrade is dependent on the number of applications and the volume of data in each application.

This window will be displayed as the upgrade process proceeds. It will list the applications that have been processed and the Green progress bar indicates the stage the process is at.



When the process is complete the window below will be displayed. It will mention the logfile that details the results of the Upgrade process which is stored in the same directory as the Upgraded QW6 Applications



Click on Ok to review the logfile. Scrolling to the right will show additional information like the number of records in the QW6 applications.

```
QW6Upgrade2021-01-25_102512.LOG - Notepad
File Edit Format View Help
Upgrade Started: 2021-01-25 10:24:57
2021-01-25 10:24:57; Upgrading C:\QW6 Update testing\Sample QW Applications\Process Downtime Tracking.qwt to C:\QW6 Update testing\Sampl
Could not find file 'C:\QW6 Update testing\Sample QW Applications\Process Monitoring Followup.QWD'.
2021-01-25 10:25:00; Upgrading C:\QW6 Update testing\Sample QW Applications\Process Monitoring.qwt to C:\QW6 Update testing\Sample QW Ap
2021-01-25 10:25:04; Upgrading C:\QW6 Update testing\Sample QW Applications\Quality Root Cause Tracking & Analysis.qwt to C:\QW6 Update
2021-01-25 10:25:05; Upgrading C:\QW6 Update testing\Sample QW Applications\Special Format Examples.qwt to C:\QW6 Update testing\Sample
2021-01-25 10:25:06; Upgrading C:\QW6 Update testing\Sample QW Applications\Database Interface - Master Limits Example\Production - SQL
2021-01-25 10:25:06; Upgrading C:\QW6 Update testing\Sample QW Applications\Database Interface - Master Limits Example\Production databa
2021-01-25 10:25:07; Upgrading C:\QW6 Update testing\Sample QW Applications\Database Interface - Master Limits Example\Production.qwt to
2021-01-25 10:25:08; Upgrading C:\QW6 Update testing\Sample QW Applications\Summary Statistics Reporting Example\Chocolate Chip 16oz.qwt
2021-01-25 10:25:08; Upgrading C:\QW6 Update testing\Sample QW Applications\Summary Statistics Reporting Example\Chocolate Mint.qwt to C
2021-01-25 10:25:09; Upgrading C:\QW6 Update testing\Sample QW Applications\Summary Statistics Reporting Example\Oatmeal 16oz.qwt to C:\
2021-01-25 10:25:10; Upgrading C:\QW6 Update testing\Sample QW Applications\Summary Statistics Reporting Example\Oatmeal Raisin 16oz.qwt
2021-01-25 10:25:12; Upgrading C:\QW6 Update testing\Sample QW Applications\Weight Scale Interface Example\Scale Interface Example.qwt t
Upgrade Complete: 2021-01-25 10:25:12
```

```
QW6Upgrade2021-01-25_102512.LOG - Notepad
File Edit Format View Help
ing\Sample QW Applications\QW6\Process Downtime Tracking.QWT6; Record Count: 195

ple QW Applications\QW6\Process Monitoring.QWT6; Record Count: 260
6 Update testing\Sample QW Applications\QW6\Quality Root Cause Tracking & Analysis.QWT6; Record Count: 71
g\Sample QW Applications\QW6\Special Format Examples.QWT6; Record Count: 5
on - SQL Server.qwt to C:\QW6 Update testing\Sample QW Applications\QW6\Production - SQL Server.QWT6; Record Count: 200
on database SQL Inquiry.qwt to C:\QW6 Update testing\Sample QW Applications\QW6\Production database SQL Inquiry.QWT6; Record Count: 2695
on.qwt to C:\QW6 Update testing\Sample QW Applications\QW6\Production.QWT6; Record Count: 100
16oz.qwt to C:\QW6 Update testing\Sample QW Applications\QW6\Chocolate Chip 16oz.QWT6; Record Count: 27
.qwt to C:\QW6 Update testing\Sample QW Applications\QW6\Chocolate Mint.QWT6; Record Count: 71
wt to C:\QW6 Update testing\Sample QW Applications\QW6\Oatmeal 16oz.QWT6; Record Count: 48
16oz.qwt to C:\QW6 Update testing\Sample QW Applications\QW6\Oatmeal Raisin 16oz.QWT6; Record Count: 33
ple.qwt to C:\QW6 Update testing\Sample QW Applications\QW6\Scale Interface Example.QWT6; Record Count: 115
```

Testing the Upgraded QW6 applications

Before you “Go Live” with QW6 you will want to perform reviews and testing on the upgraded applications. Items like Interfaces to devices and external systems, custom scripting and reporting that may be present. This will take time and during that time users will continue to enter and change data in the QW5 version of the application. Applications may also have been modified – updated limits (Spec Targets) new variables added, deleted, or changed in format. Revisions to Views – added, deleted, or changed.

Going Live with QW6 Applications:

Now once you are ready to “Go Live” with QW6 and your testing is complete you may want to consider redoing the Upgrade process to ensure any additional data or changes made to QW5 applications will be included in the updated QW6 Applications.

If you do decide to repeat the upgrade process, make sure you select the Overwrite option to make sure you replace the previously upgraded applications with the current versions of the QW5 applications.

Updating QW6 Shared Configuration Files:

One last task in the Go Live process would be to verify that Shared Configuration Files are set to the correct Shared Resource file and that the correct default data directory is set.

QW6 Shared Configuration Manager 6.0.67

File Help

Shared configuration path:
C:\ProgramData\Busitech\QW6\ Change

Default data directory:
C:\Busitech\QW6\Sample Applications ← Change

Installation directory:
C:\Program Files (x86)\Busitech\QW6\ Change

Path	Modified (Local)	Modified (Shared)
✓ C:\ProgramData\Busitech\QW6\	2021-01-06 6:10:52 PM	
✓ C:\ProgramData\Busitech\QW6\QWRULES.IQW	2002-10-28 9:19:54 AM	2002-10-28 9:19:54 AM
✓ C:\ProgramData\Busitech\QW6\QWUNITS.IQW	2020-12-02 3:00:16 PM	2020-12-02 3:00:16 PM
✓ C:\ProgramData\Busitech\QW6\QWSTATS.IQW	2015-03-12 2:17:48 PM	2015-03-12 2:17:48 PM
✓ C:\ProgramData\Busitech\QW6\QWSCRIPT.QW\X6	2019-10-22 9:48:06 AM	2019-10-22 9:48:06 AM
✓ C:\ProgramData\Busitech\QW6\QWSECURE.MDB	2021-01-26 2:46:49 PM	2021-01-26 2:46:49 PM

Publish local resource files to the shared path on save.

Help Save