



QW6 Spec Manager

User Guide

February 27, 2024

Table of Contents

Table of Contents	2
Overview	3
Using Spec Manager.....	3
Spec Manager Security	3
List of Active Applications	4
Add Application(s)	4
Remove Application(s).....	4
Filtering Applications	5
Opening Bulk Editor	5
Using Spec Manager Bulk Editor	6
Spec Manager Bulk Editor Menu Options	7
File → Manage Applications	7
File → Commit Changes	7
Edit → Restore Original Value	8
Edit → Cut	8
Edit → Copy	8
Edit → Paste	8
Edit → Fill.....	8
Edit → Replace.....	9
Right Click Edit Menu	9
Options → Clear All Filters	9
View → Show Paths	9
View → Show Only Numeric Variables	9
View → Show All Properties	9
Help → PDF User Guide.....	9
Help → About Spec Manager	10
Support	10
Knowledge Base	10

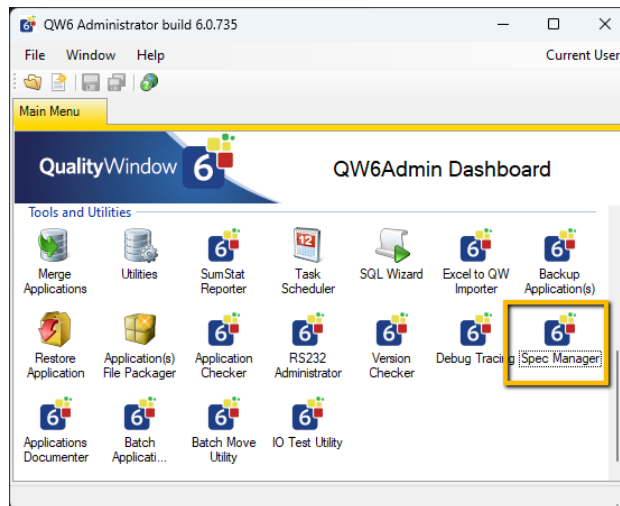
Overview

QW6 Spec Manager is a rapid change tool for making bulk variable modifications of Quality Window applications, in terms of application schema changes. Only properties that do not result in structural changes are allowed to be modified. Changes such as variable additions, deletions or variable length changes are not possible in this utility. As with updating a single application, all changes are logged in each application’s change log.

Warning: Before proceeding with making any changes to QW Applications using this tool it is strongly recommended that backups of all applications be performed before committing any changes.

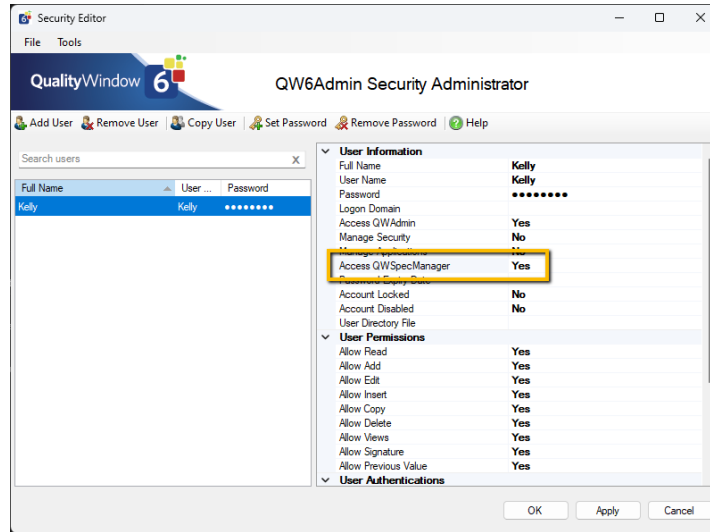
Using Spec Manager

The Spec Manager can be access from the QW6 Administrator Dashboard in the Tools and Utilities section.



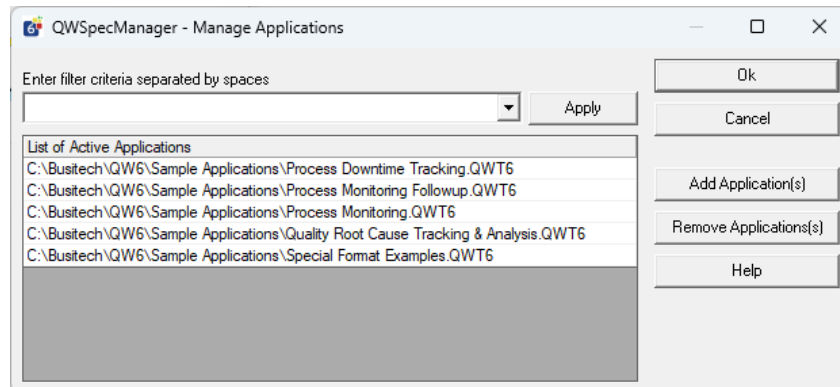
Spec Manager Security

Spec Manager respects QW6 security settings and if security is enabled, only users with Access Spec Manager permissions will be permitted to access the utility. Users with access will be prompted every time they open Spec Manager for their username and password. See [Busitech’s Knowledge Base](#) for more details on configuring security in your QW deployment.



List of Active Applications

When first opened, Spec Manager will display a list of active application file paths. These applications are the applications that will load in the bulk editing tool. The tool will preserve the list across different sessions. Users can easily configure which applications they want to bulk edit by adding, removing or filtering applications.



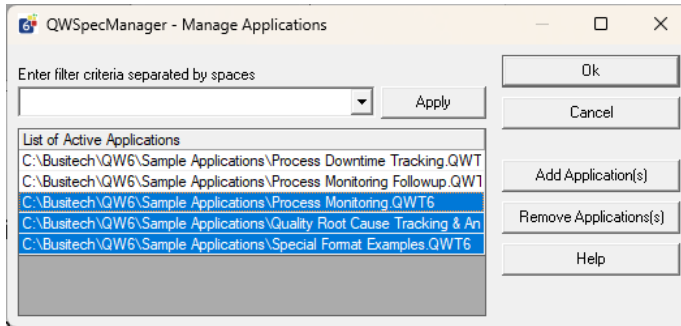
Add Application(s)

Click 'Add Application(s)' to add one or more applications to the active application list.

Remove Application(s)

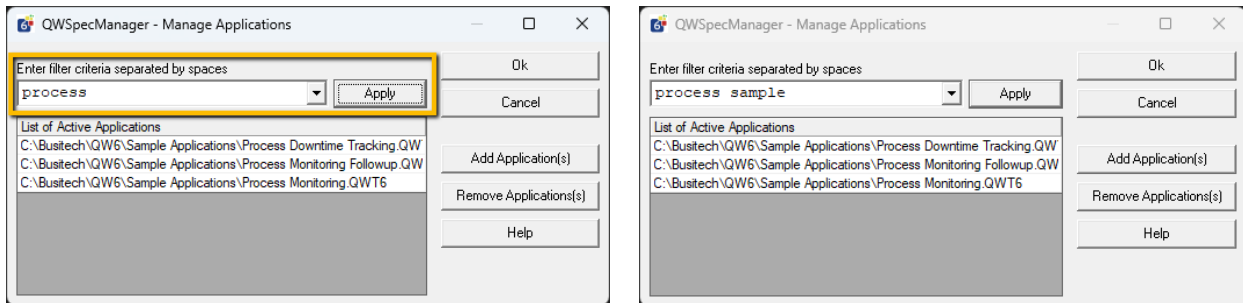
Click 'Remove Application(s)' to remove one or more applications from the active application list. To select multiple applications, use standard Microsoft Windows 'SHIFT+Click' or 'CTRL+Click' method.

QW6 Spec Manager



Filtering Applications

The filename text filter allows the user to filter for specific words in the list of active applications file paths. You can filter using multiple words that occur in the applications path such as folders or filenames.

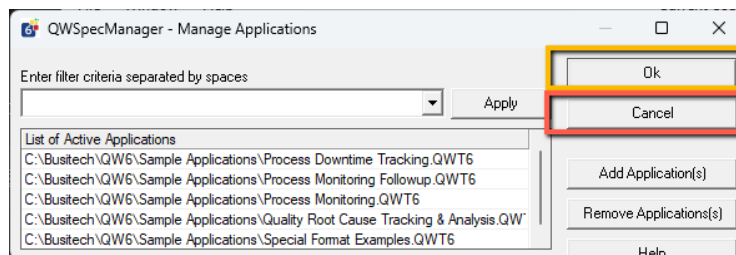


This feature allows users to add many applications to the active application list but only bulk edit ones that are filtered using the text filter criteria. Clicking OK when a filter is applied will open only the filtered applications in the bulk editor.

The filter dropdown will remember previous filters users have used to open the bulk editor making it easier in future sessions.

Opening Bulk Editor

To open the bulk editor with the current Active applications, click the Ok button. Clicking the cancel button will close Spec Manager.



Using Spec Manager Bulk Editor

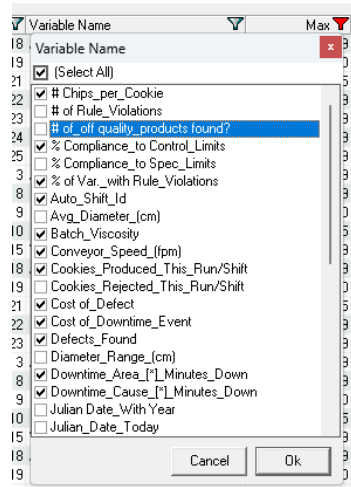
The Bulk editing screen allows administrators to quickly bulk update any of the active application variables. The main purpose of this view is to make updating limit specifications in bulk easy. By default, the bulk editor grid displays all numeric type variables (numeric, calculated, range and average) in the active applications. It should be noted that each view defined in an application will have its variables also listed in the editor.

Each Variable (row) will have the following columns available.

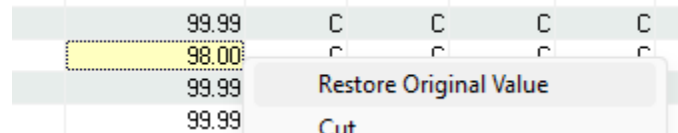
Column	Editable	Details
Filename	No	Application filename.
Title	No	Application title.
View name	No	View name for variable, empty if not associated with a view.
Variable number	No	Index, or position of the variable in the application or view.
Variable Name	Yes	Name of the variable.
Max	Yes	Maximum value
USL	Yes	Upper Spec Limit value
UCL	Yes	Upper Control Limit Value
UWL	Yes	Upper Warning Limit Value
TGT	Yes	Target Value
LWL	Yes	Lower Warning Limit Value
LCL	Yes	Lower Control Limit value
LSL	Yes	Lower Spec Limit Value
Min	Yes	Minimum Value
Type	No	Variable Type (N= numeric, C= calculated, R=range A=average, P= popup, L=Lookup, T=Text)
Length	No	Length of variable value
Decimal	No	How many decimal places
Optional Columns – View Menu -> Toggle “Show All Properties”		
XRef	Yes	Cross Reference Value
Report Type	Yes	Report Type Values (V=Variable, VT=VariableTargetRange, A=AttributeMeasurable, A1=AttributeCount1 A3= AttributeCount3, A5= AttributeCount5, A10= AttributeCount10, A20= AttributeCount20, A30= AttributeCount30)
Limit Method	Yes	Limit Calculation Methods (Population, MovingRangeEstimate, LowVariation, HighVariation, LowAverage, HighAverage)
Target Method	Yes	Target Calculation Method (Fixed, Calculated)
Sample		Sampling Plane
Required	Yes	Is input required (Y=Yes, N=No)
Category	Yes	Category Value
Units	Yes	Units of Measure (Refer to Units of measure configuration for values)
Rules	Yes	Alarm Rules for Variable (Refer to rules configuration)
Popup	Yes	Popup File Path (***)does not support relative paths) Only works for Popup-P variable type.
InputFile	Yes	Input File Path (***)does not support relative paths)
OutputFile	Yes	Output File Path (***)does not support relative paths)
HelpFile	Yes	Help File Path (***)does not support relative paths)
Calculation	Yes	Calculation formula. Only works for Calculated-C variables.
UCase	Yes	Force Upper Case Only works for Text-T variables

QW6 Spec Manager

Each column in the grid can be filtered by clicking on the corresponding column title, and then making selections from the list displayed. You can have as many columns filtered as you like. Filtered columns will have a red funnel icon displayed.



When a value is changed to a different value in the editor grid it will highlight to yellow as seen in the screen shot below. To restore the value to the original value, right click the cell and select “Restore Original Value”



Spec Manager Bulk Editor Menu Options

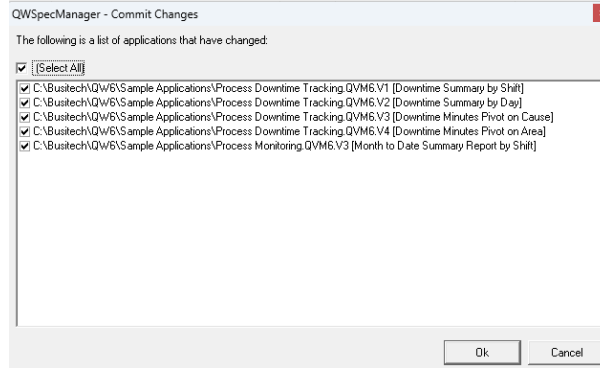
The bulk editor menu provides many capabilities from showing different columns to enabling bulk filling. See below for details on each menu option.

File → Manage Applications

Displays the Active Applications List allowing the user to add or remove applications.

File → Commit Changes

Commits all changes made to the grid by updating the appropriate applications or views. A confirmation dialog with a list of affected applications will be displayed allowing the user to select change which applications should be updated by the commit command.



Note: all changes to an application made using Spec Manager will be written to the application change log. This is the same change log that the QWAdmin Maintain Applications uses to log all changes.

Edit → Restore Original Value

Reverts all values for selected or highlighted cells to their original value (last saved/committed value)

Edit → Cut

Applies Clipboard Cut operation for all selected or highlighted cells. This operation will clear the current value of the cell.

Edit → Copy

Applies Clipboard Copy operation for all selected or highlighted cells. This operation will clear the current value of the cell.

Edit → Paste

Applies the Clipboard Paste operation from the first selected or highlighted cell (Top Left toward bottom right). Support Clipboard table operations such as copying from Excel or other tables.

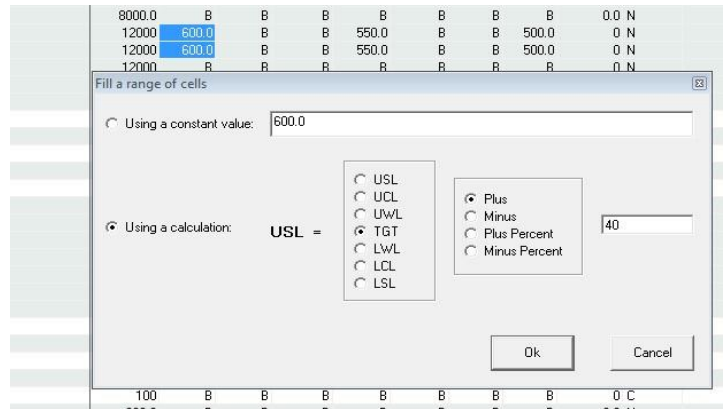
Edit → Fill...

Allows the user to bulk fill values in the selected or highlighted cells. Support two different fill modes:

Constant Value – Fills the selected cells with a constant value.

Calculated Value – If selected cells are of the same limit in a column the values can be calculated from its companion limit value. See example below where multiple USL cells are selected the fill operation will use the value of the companion TGT limit (550) and add 40 resulting in a fill of 590 in the USL column.

QW6 Spec Manager

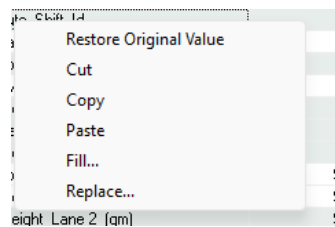


Edit → Replace...

Replace the occurrence of one text with another in selected cells within the same column. This feature is not supported across multiple columns.

Right Click Edit Menu

The edit menu is available via right clicking on the bulk editor grid.



Options → Clear All Filters

Clears all variable filters currently applied to columns.

View → Show Paths

Toggles the display of full paths in the filename column.

View → Show Only Numeric Variables

Toggle hiding non-numeric variables in the bulk editor grid. Enabled by default.

View → Show All Properties

Toggles hiding non-limit properties in bulk editor grid. Disabled by default.

Help → PDF User Guide

Displays this help document.

Help → About Spec Manager

Displays the About screen showing version number and contact information.

Support

If you have questions that are not answered with this document, please contact support@busitech.com and the Busitech support team will be happy to assist you.

Knowledge Base

To learn about other Quality Window capabilities please visit the [Knowledge Base](#) on our website (www.busitech.com) where you can find videos and other PDF resources that will help you increase your success this software.