

# Backing up Applications in QW6

Protecting your valuable data from loss is very important. Regular timely backups of the data ensures that you can recover data when it is required due to hardware failures, deletions, or corrupted files.

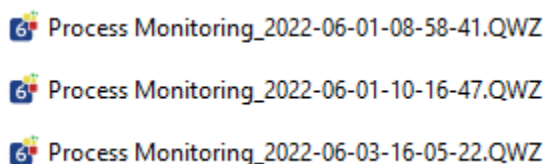
There are three options for backups available in QW6:

1. QWAdmin – Applications Maintenance
2. Using the QWAdmin QW6Backup Utility
3. Automatically performing timed Backups using QW6Backup and the QW6Scheduler Utility

## QWAdmin – Applications Maintenance

In the QW6Admin module when structure modifications are made to an application, (example the addition or deletion of variables), an archive of the application is automatically created prior to the modifications. It is saved by default in the QWArchive directory below the current QW6 Application directory. The archive file will have the name of the QW6 Applications that was modified along with the date and time of when the archive was created with a file extension of QWZ.

*“C:\Busitech\QW6\Sample Applications\QWArchive”*



This option only provides a Backup when a structure change is made to an application. If the last change was made week ago it is not a very timely option.

## QWAdmin QW6Backup utility

The QW6Backup utility is available through an Icon in the QW6Admin module with the Restore Icon right beside it. The QW6Backup Utility can also be found in the in the directory where the QW6 software was installed...typically C:\Program Files (x86)\Busitech\QW6.

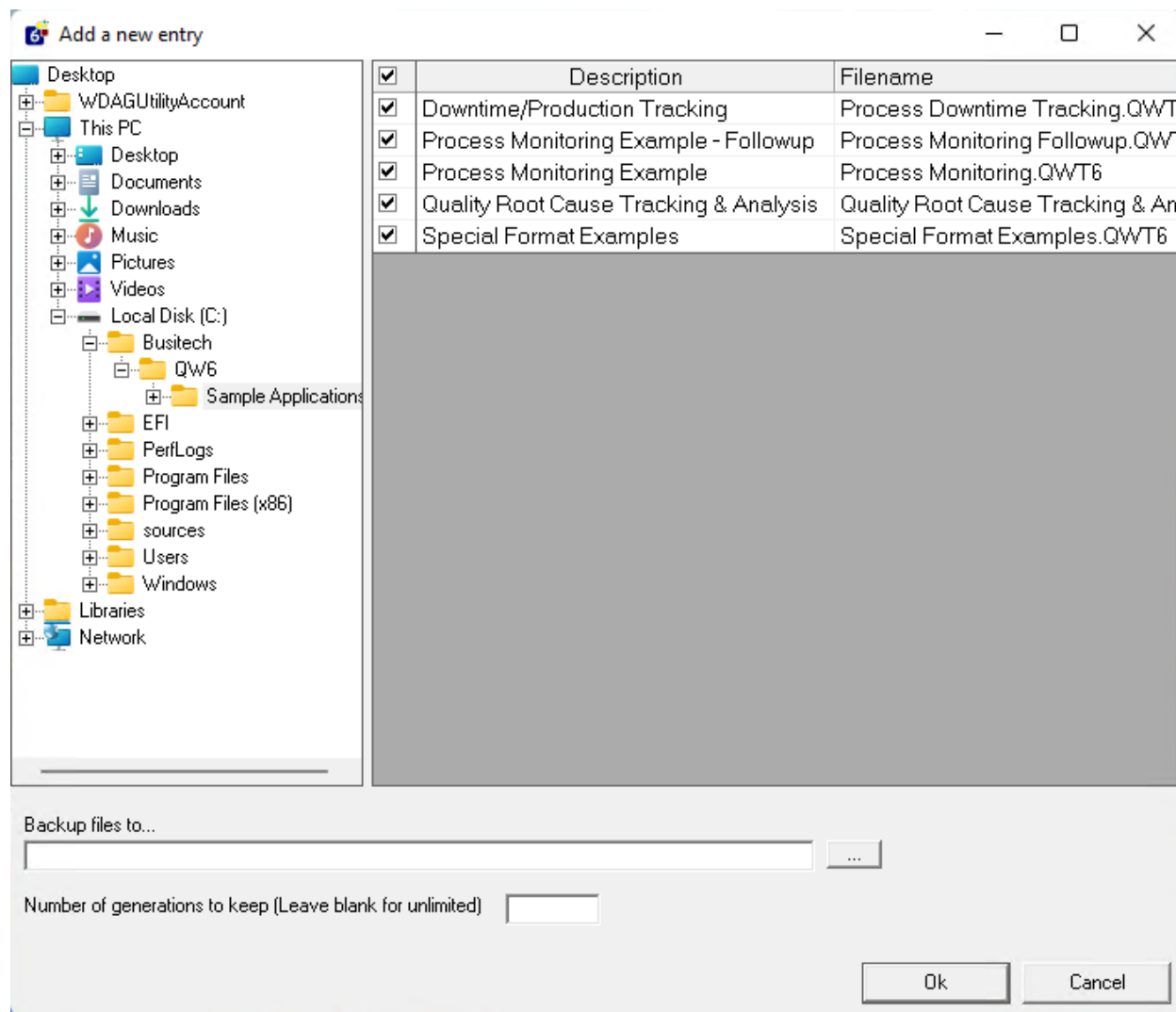


Select the Backup Applications icon from the QW6Admin module by clicking on it.



Select Add and navigate to the directory that contains the application to be backed up and select the application(s) you wish to backup.

# Backing up Applications in QW6

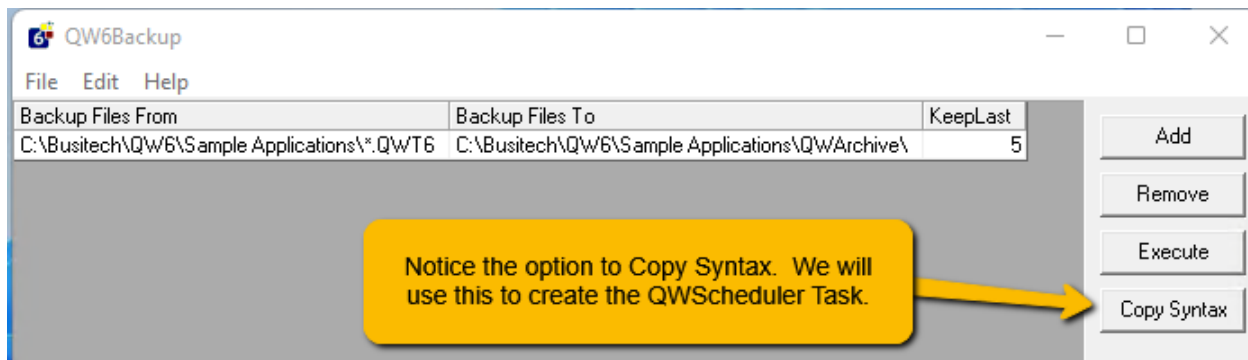


Next, select the location where the Archive files are to be stored. QW6 will typically store the archive files in a directory called QWArchive directly under the QW6 Applications directory. You can select and or create a different directory.



Set the Number of generations to 10 or more to make sure you don't overwrite a backup before you discover there is a problem.

Select Ok when you finished.



You can now save the QW6Backup procedure for future use and select each time you wish to perform a backup.

This option does provide a complete backup of the selected applications, but you have to remember to select the Backup to be performed.

## Automatically performing timed Backups using QW6Backup and the QW6Scheduler Utility

This option will combine the use of the QW6Backup utility and the QW6Scheduler Utility to provide an unattended automatic backup of the selected applications.

Open QW6Admin on the server and select QW6Schedule...if it is already running on the server then look in the system tray to find the QW6 Icon for QW6Schedule. You can hover your mouse pointer over the icons in the system tray to find the one for QW6Scheduler. Click on the Icon to open QW6Scheduler.

Click on File and select Add new Scheduled Task

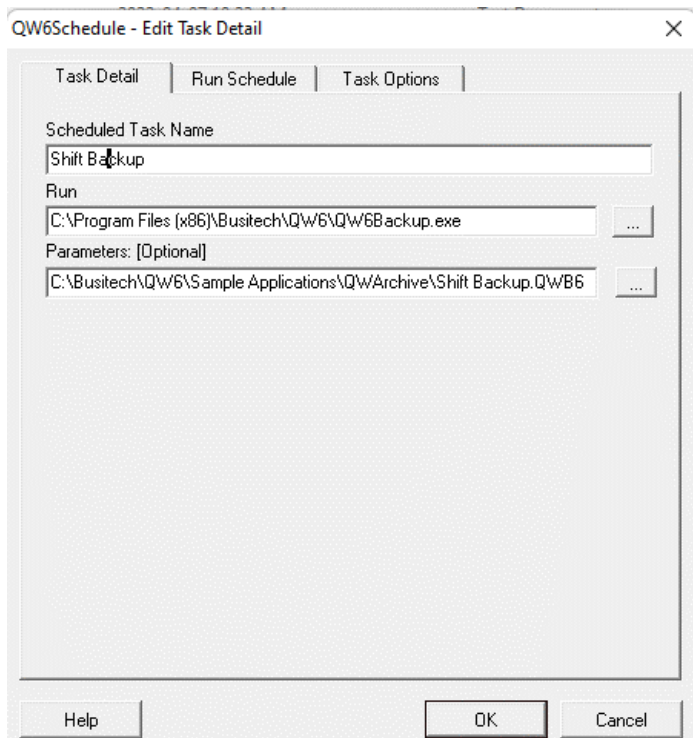
Give the task a name – EX: *“Shift Backup”*

In the Run command use the ... to the right to navigate to the QW6 Program directory ...typically *“C:\Program Files (x86)\Busitech\QW6”* and select the QW6Backup.exe module.

In the Parameters window use the ... to the right to navigate to the location where you saved the Backup Command file and select the file. If you still have the QW6Backup window open, go to that window and select Copy Syntax and paste into the Parameters window.

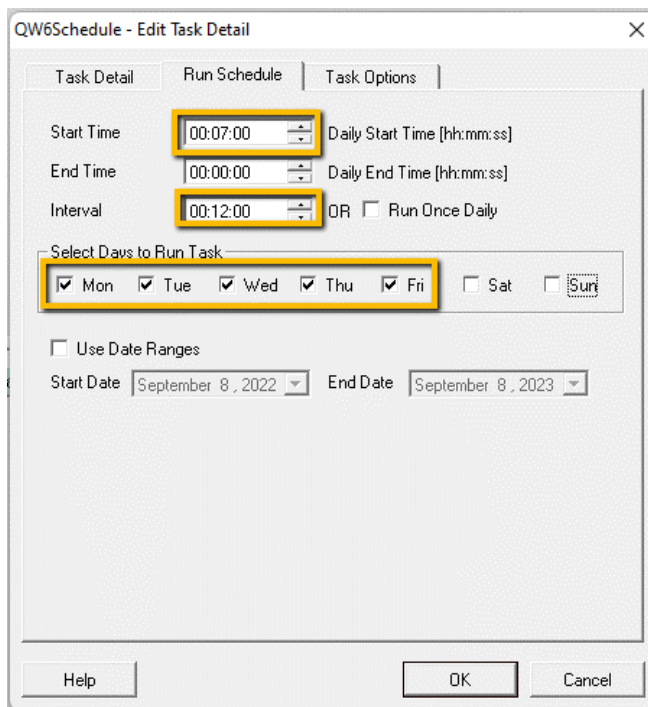
It should look like this:

# Backing up Applications in QW6



Now Select the Run Schedule tab at the top.

I set this example to run at 7am and every 12 hours Monday to Friday (12-hour 5 day operation)



# Backing up Applications in QW6

You could setup two tasks one at 7am and one at 7pm based on 12 shifts or the times that reflect your shift times. As you can see on the screen there are many configuration options to best match your requirements.

Now select the Task Options

If you have a link to an automation system that indicates if the line is active or not you can use this screen to avoid running a backup if the line is down.

The screenshot shows the 'QW6Schedule - Edit Task Detail' dialog box with the 'Task Options' tab selected. The 'Use Run Condition' checkbox is unchecked. Below it, there is a text box for 'Address of Conditional Value (DDE/OPC)' and a 'Condition' dropdown menu. The 'Run Mode' is set to 'Normal'. The 'Show Option' is set to 'Show Normal'. There is a 'Comments: [Optional]' text box. At the bottom are 'Help', 'OK', and 'Cancel' buttons.

Click Ok and the Schedule Task creation is complete.

Now you can activate the task.

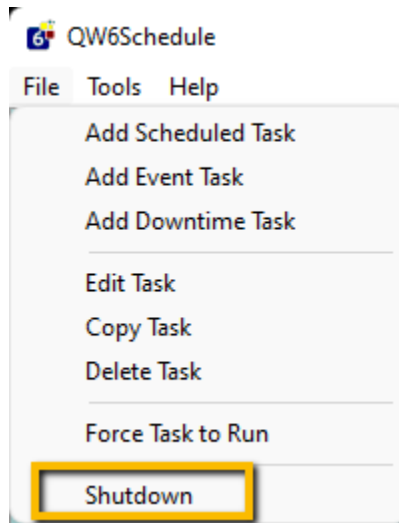
The screenshot shows the 'QW6Schedule' application window. It has a menu bar with 'File', 'Tools', and 'Help'. Below the menu bar is a table with columns: Start Time, End Time, Interval, Start Date, End Date, Times Run, Next Time, Last Date, Last Time, and Status. The first row is highlighted with a checkmark in the Status column. Below the table is a yellow callout box that says 'Click here to activate the task' with an arrow pointing to the checkmark. Another yellow callout box says 'View the activity log here' with an arrow pointing to the 'Run' column of the activity log table below. The activity log table has columns: Date, Time, Task Name, and Run. The first row shows: 2022-09-08, 14:29:36, Shift Backup, C:\Program Files (x86)\Busitech\QW6\QW6Backup.exe, C:\BUSITECH\QW6.

Start Time	End Time	Interval	Start Date	End Date	Times Run	Next Time	Last Date	Last Time	Status
07:00:00	00:00:00	12:00:00			1	19:00:00	2022-09-08	19:00:00	Success

Date	Time	Task Name	Run
2022-09-08	14:29:36	Shift Backup	C:\Program Files (x86)\Busitech\QW6\QW6Backup.exe C:\BUSITECH\QW6

# Backing up Applications in QW6



You can close the QWScheduler Module by clicking on the X in the top right corner. QW6Scheduler will continue to run in the background. If you ever want to stop QW6Scheduler you can call up QW6Scheduler from the system tray and select Shutdown.

## **Special Note:**

**If the workstation/Server that is running QW6Scheduler is shut down and restarted, you should verify that QW6Scheduler is restarted as well.**

**You can add QW6Scheduler to the System Startup applications to automatically run on start up.**