

# Application Help

## Using the Trieto Screen for Event Analysis

This sample application demonstrates how Quality Window can be configured for **event-based tracking**, specifically downtime analysis. It is designed to help teams capture, analyze, and ultimately reduce recurring process disruptions.

### What Is an Event Application?

Event applications are used to record data when something **goes wrong** — such as:

- Downtime events
- Quality defects
- Product loss or waste
- Customer complaints

Each event entry typically includes:

- A **measure of severity** (e.g., minutes down, cost, scrap count)
- **Descriptive context** (e.g., team, shift, root cause, product, area)

This structure enables meaningful **Pareto and interval analysis**, helping users identify top loss drivers and prioritize improvement efforts.

### The Trieto Screen

The [Trieto screen](#) provides a powerful view for analyzing event data across three dimensions:

- **Frequency** – how often events occur
- **Impact** – duration in minutes

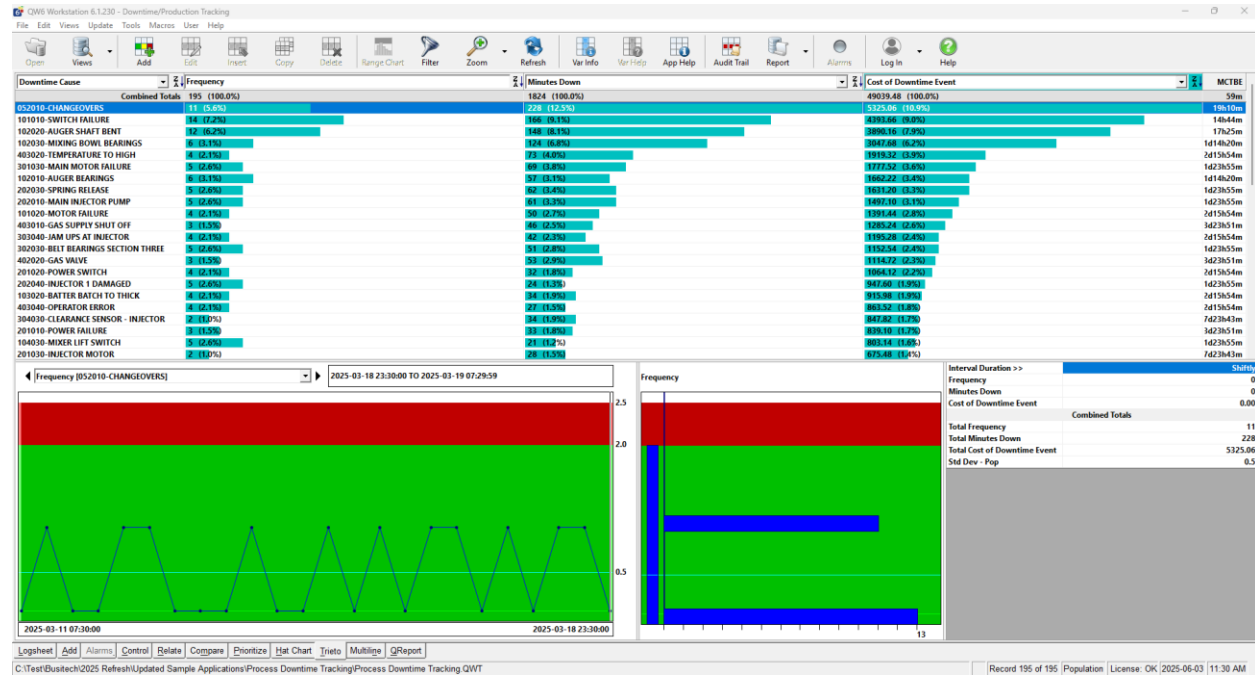
# QualityWindow

The continuous improvement software



- **Cost** – dollar impact

These are shown as **three Pareto charts**, paired with a **time-based interval chart** that highlights when events occurred.



## How to Set Up the Trieto View

Trieto behavior is configured in the **QW Application General View settings** under the section: **Event Information – Trieto Chart**

In this sample, the following mappings are used:

- **Frequency:** Each record represents one event.
- **Units (Duration):** V13 – Minutes\_Down
- **Weight (Cost):** V14 – Cost\_of\_Downtime\_Event

These fields are assigned using:

- Variable used for Units
- Variable used for Weight

Find more help at our [Knowledge Base](#)

[Busitech.com](#)



Event Information - Trieto Chart	
Variable used for Units	v13 - Minutes_Down
Description of Units	Minutes Down
Description of Frequency	Event
Variable used for Weight	v14 - Cost of_Downtime_Event
Description of Weight	\$ Cost

The chart then uses these assignments to automatically group and rank event records across the selected interval.

## Why It Matters

Using the Trieto screen allows you to:

- Visually identify **which root causes** are the most frequent
- Quantify which issues take the most **time**
- Expose which losses are the **most expensive**
- Track how all of this changes **over time**

Together, this empowers users to focus on the **right problems**, backed by real data.

For more information on configuring event-based applications or Trieto analysis, visit the [Busitech Knowledge Base](#) or contact support at [support@busitech.com](mailto:support@busitech.com).