

# Quality Window License Server Installation Guide

Version 5.0.193

## Introduction

Quality Window 5.0 can be licensed in two ways: Standalone License or Server License

In Standalone License mode, a single workstation is assigned a unique license with unlimited use. In Server License mode, a server with QWLicenseServer installed is assigned a special license with an encoded number of seats, and each workstation configured to communicate with the server is allocated a seat based on the number of concurrent seats already allocated. In other words, a 5 seat license means that at most, 5 workstations can communicate to the server at any one time. *It is highly advisable that mission critical workstations be allocated standalone licenses to be guaranteed usage of the software when they need it.*

## Requirements

Quality Window License Server must be installed on a workstation or server with a Static IP address with at least 1 unused TCP port. Win2000, WinXP, Vista, Server2003, Server 2008, Server 2012, Windows 7,8 and 8.1 are supported. There is very little demand on memory, CPU and Disk space when QW License Server is running, however network TCP traffic can be demanding with a high number of concurrent users checking-in (larger than 100 users). The software is usually installed on an existing server that may be providing other services such as a file server or web server.

## Installation

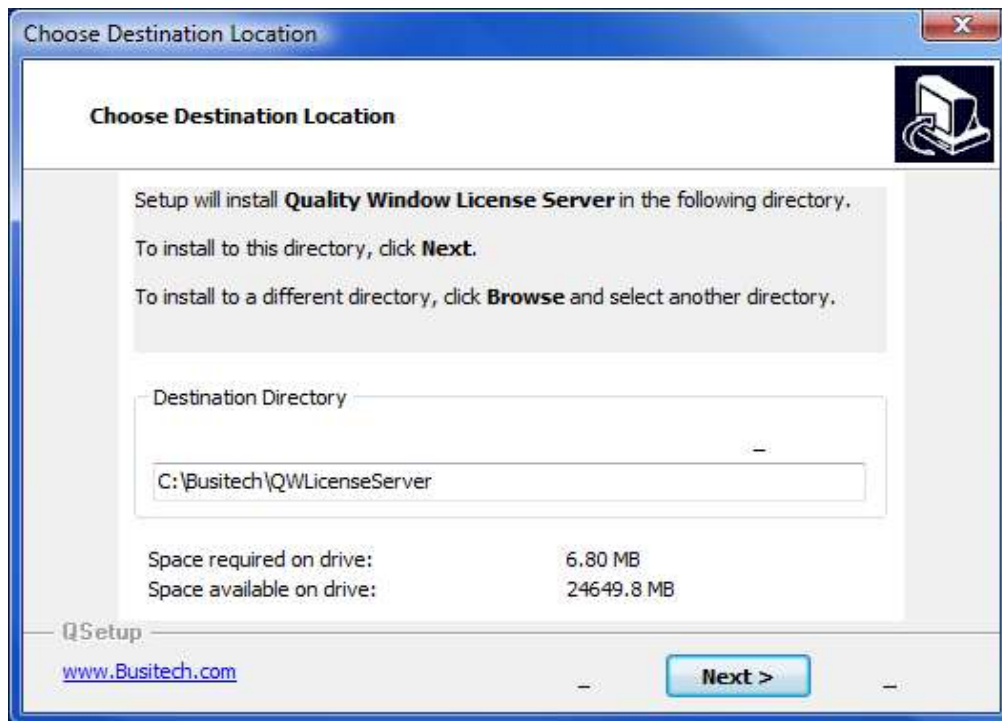
Download and run the following installation package:

<http://assets.busitech.com/software/QWLicenseServer/QWLicenseServerInstall.exe>

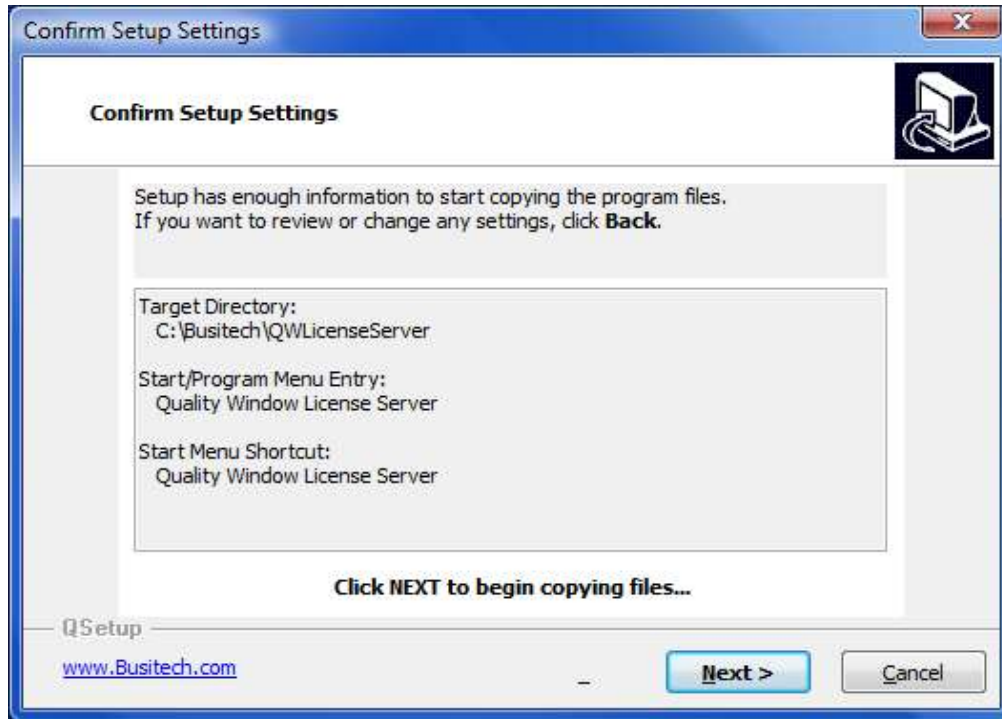
The following screen should appear:



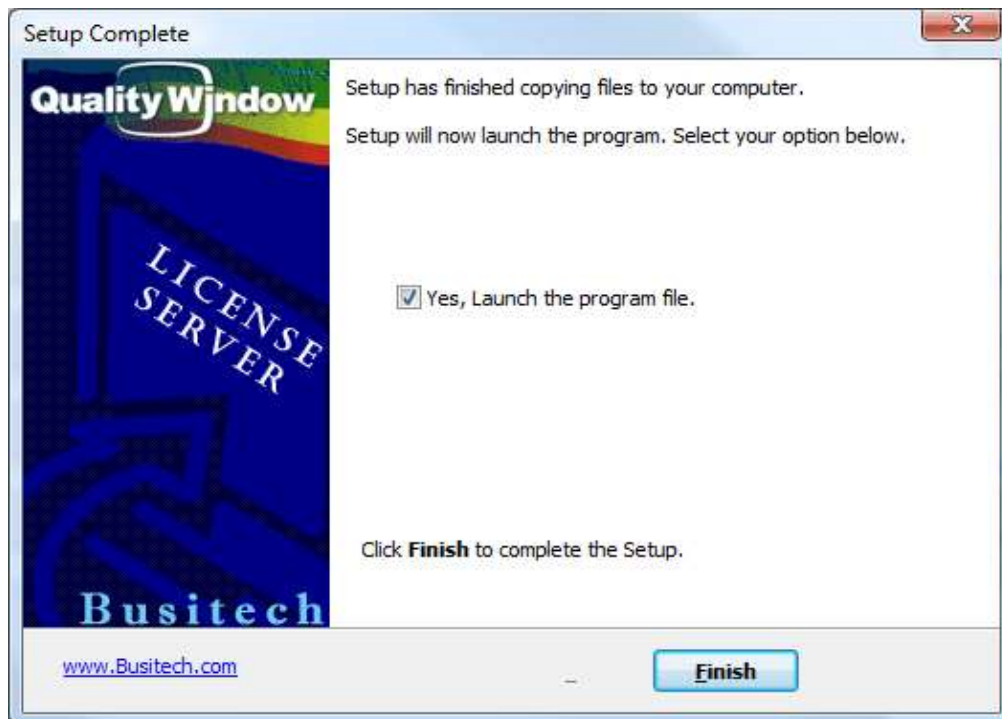
Now click **Next**.



At this point, either change the destination folder or leave it as default, and then click **Next**.



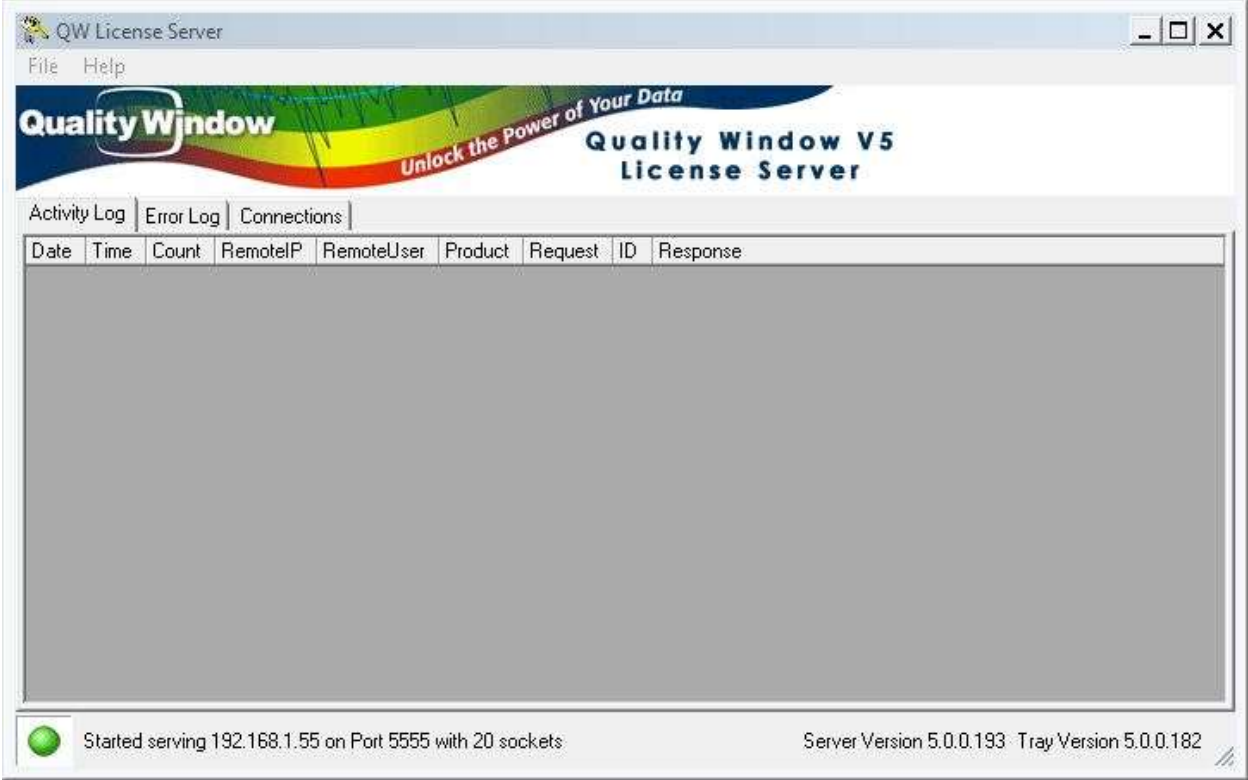
Click **Next** to start copying files.



QWLicenseServer has now been installed. Click on **Finish** to start QWLicenseServer.

Note the KeyChain icon in the System Tray – Right-click on this icon to Start/Stop the Windows service, or to enter the Administration module for QWLicenseServer.

If you Left-click on the icon, a log window such as this will be displayed:



For each access to QWLicenseServer, an entry would be displayed in this window. Make note of the status bar where it says: **Serving 192.168.1.55 on Port 5555**. This is the current workstation IP address that the server is configured for as well as the TCP Port we will specify later in the administration program. These settings will be required when we configure the workstations.

At this point you have no Products defined for QWLicenseServer. Right-click on the icon and select **Administration**.

QW License Server Administration

Quality Window  
Unlock the Power of Your Data

QW License Server Administration

**General**

Local IP Address  
(Only required if you have multiple interfaces) 192.168.0.4

QW License TCP Port 5555

Allow Duplicate Connections

Inactive Connections (secs) 120

Max on Screen Log 1000

Record Check-Ins

Log to Quality Window  
E:\projects\QWLicenseServer\QWLicenseServer ...

Log To Comma Separated File  
E:\projects\QWLicenseServer\QWLicenseServer ...

<http://www.busitech.com>  
[support@busitech.com](mailto:support@busitech.com)

Save Close

For the **Local IP Address**, you can leave this blank and QWLicenseServer will use the IP address associated with the first interface card it finds. If you have multiple interface cards and you want to have QWLicenseServer listen on a specific IP address, then enter the IP address here.

Choose a **TCP Port** that you know is not currently being used on this server (Default 5555)

**Allow Duplicates** if selected, means that if a workstation runs multiple instances of a program, that only 1 seat should be allocated for all instances. If not selected, then each instance will consume a seat.

**Inactive Connections** is the number of seconds that an ID has not checked in, in order to release the seat. The default of 2 minutes is usually fine.

**Max on Screen Log** is the maximum number of log records to display in the Log Window. Note that ALL log records are written to the log files if a log file was specified.

**Log to Quality Window** (if specified) allows you to output log entries to a Quality Window application.

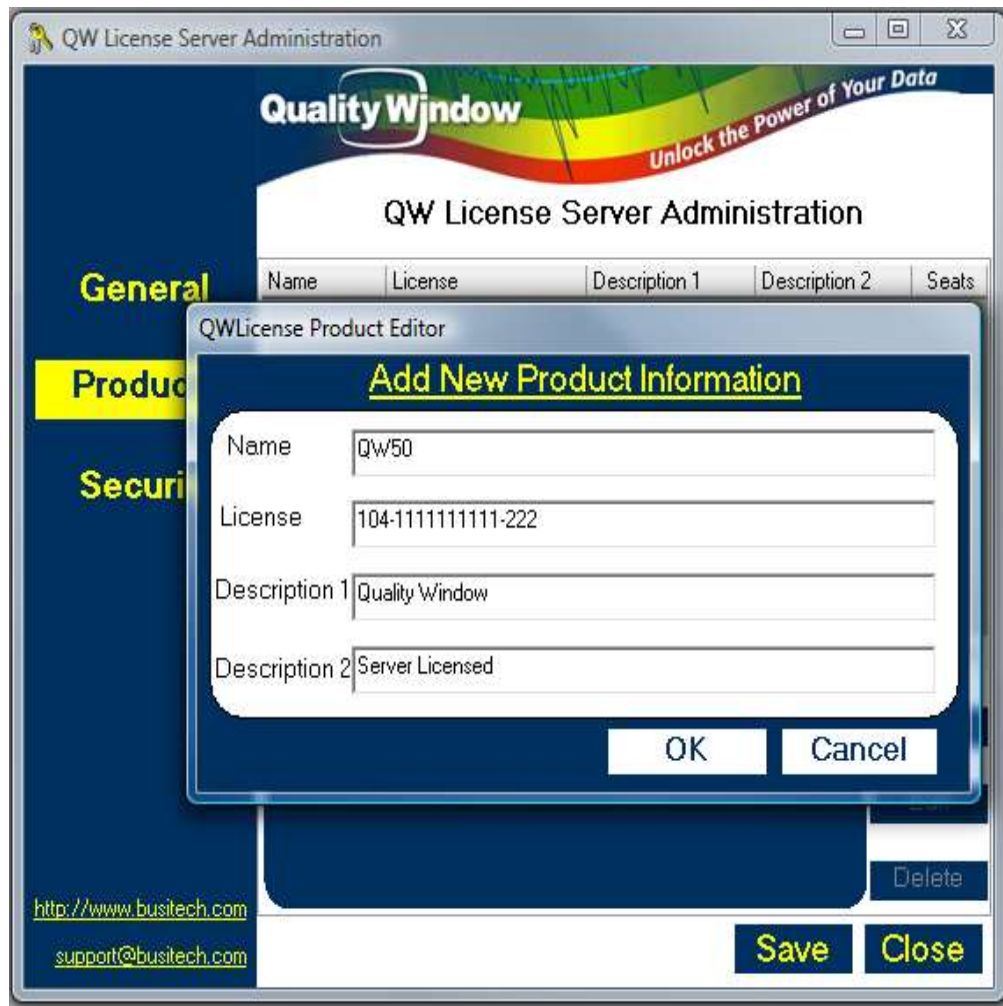
**Log to Comma Separated File** (if specified) allows you to output log entries to a CSV file which can later be imported into Excel.

Now click on the **Products** tab to create a new product.





Now click **Add** to add a new product.



Enter the Product Name (ie if using Quality Window 5.0, then enter **QW50**)

Enter the License number that was assigned or emailed to you. Include both hyphens.

Enter both Descriptions to document the product or company name.

Now press **Ok**.

You have just created your first Product.

The screenshot shows the 'QW License Server Administration' web application. The interface includes a navigation sidebar with 'General', 'Products', and 'Security' options. The 'Products' section is active, displaying a table with one product entry. Below the table is a summary box for the selected product, and at the bottom are 'Save' and 'Close' buttons.

**Quality Window**  
Unlock the Power of Your Data

### QW License Server Administration

Name	License	Description 1	Description 2	Seats
QW50	104-401846-979-229	Quality Window	Server Licensed	10

**Name:** QW50  
**License:** 104-401846-979-229  
**Desc1:** Quality Window  
**Desc2:** Server Licensed  
**Seats:** 10

<http://www.busitech.com>  
[support@busitech.com](mailto:support@busitech.com)

**Save** **Close**



Now that you have your product set up, you can define some Security rules. Click on the **Security** tab on the left.



QWLicenseServer can be configured to allow or refuse external requests based on the user's IP address, his Computer name, or his logon User name. The first drop-down box defines whether you want to initially ALLOW all requestors, or initially DISALLOW all requestors. Set the appropriate value and continue on to the grid below.



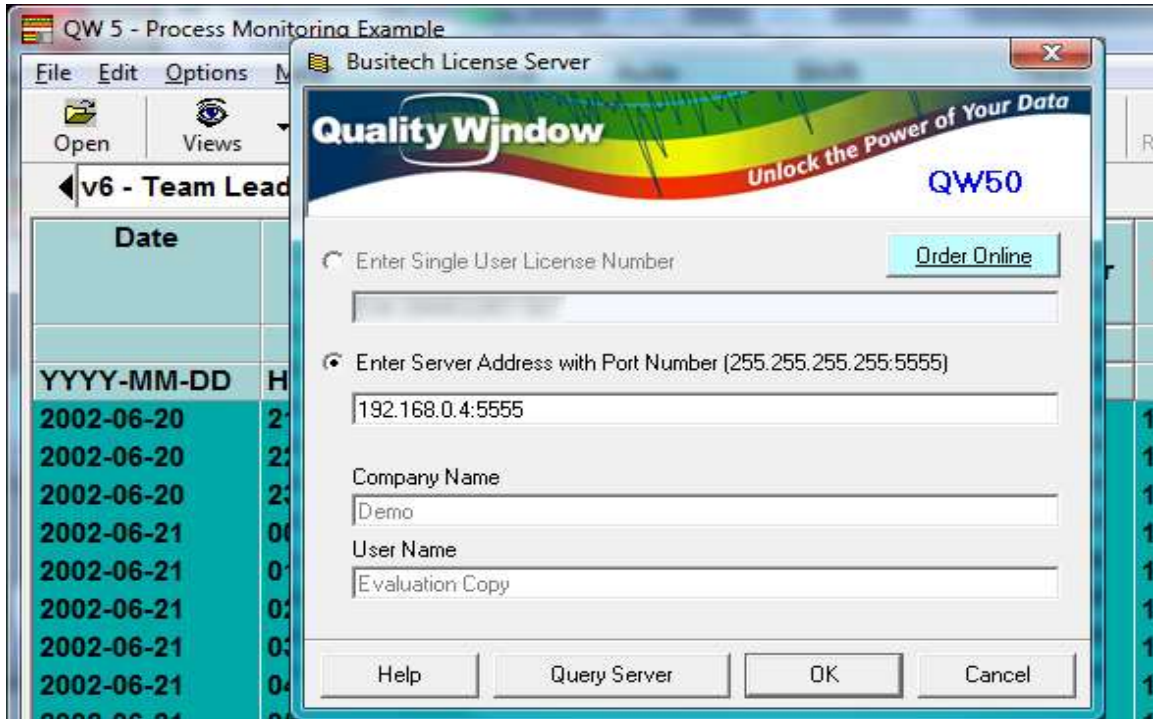
The security grid is broken into 3 parameters, where the first column defines the access rule of Allow or Disallow, then second column defines the scope which could be by IP address, Computer name, or by User name. The third column defines that actual value to test against.

In the example above, all requestors are initially disallowed, but if request came from IP address 207.164.39.216 then allow it. Then it would check if the Computer name was RAYSLAPTOP and if so Allow it. Then it would check if the User's name was RAY, and if so Allow it. Note that you can use the Testing Area below the grid to enter example requests, and click on the Test button to determine if that scenario would be allowed or not. If the example, the test would return that the request was accepted. If a user called RAY was to make a request from IP 1.2.3.4 with a computer name of MYPC, then the request would still be valid since the USER name matched.

The system basically validates the request top-down in the list to determine if the request should be allowed or not. Note that a '0' specified as one of the IP sub-addresses means to use it as a wildcard (eg 207.164.39.0 would correspond to all addresses from 207.164.39.0 through 207.164.39.255 ... entire Class C address range).

Now click on **Save** and then **Close**. You will get a message stating that changes will not take effect until you restart the License Server program. Using the Tray icon, Stop QWLicenseServer and then restart it.

With QWLicenseServer both configured and running, run Quality Window on one of the workstations. Then click on menu **Help**, and choose **Register QW 5**.



Click on the Server Address radio button and enter the IP address of the server, a colon, followed by the TCP Port configured on the server. Now click on the **Ok** button. A warning message appears to remind you that you will be switching to Server Licensing – click **Yes** to confirm.

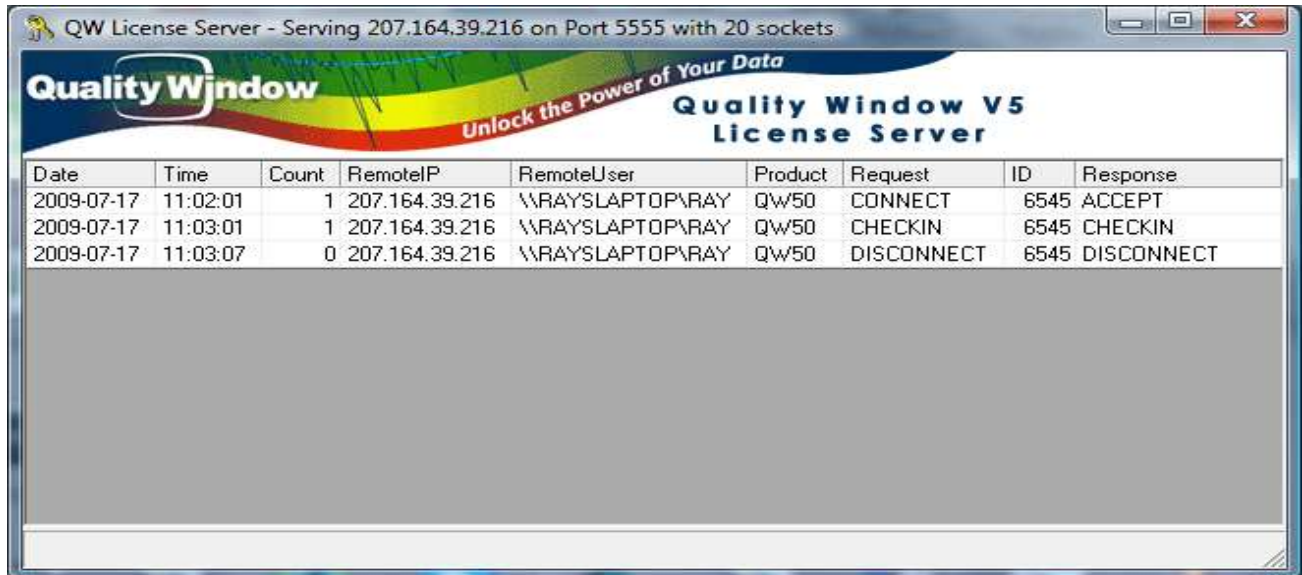


Note that if you have a DNS name defined for the Server's IP address, you can enter the DNS name instead of the IP address in Quality Window. For example, if you have MyLicenseServer.Busitech.com in DNS associated with the address 192,168.0.4, then in Quality Window you could enter:

**MyLicenseServer.Busitech.com:5555**

This way, if you choose to change the IP address of the server, your administrator only needs to change the DNS entry and all Quality Window users will automatically point to the new IP address.

Now close Quality Window and restart it with an open application. You should now see activity in QWLicenseServer as follows:



The screenshot shows a Windows application window titled "QW License Server - Serving 207.164.39.216 on Port 5555 with 20 sockets". The window has a header with the "Quality Window" logo and the slogan "Unlock the Power of Your Data". Below the header, it says "Quality Window V5 License Server". The main area of the window contains a table with the following data:

Date	Time	Count	RemotelP	RemoteUser	Product	Request	ID	Response
2009-07-17	11:02:01	1	207.164.39.216	\\RAYSLAPTOP\RAY	QW50	CONNECT	6545	ACCEPT
2009-07-17	11:03:01	1	207.164.39.216	\\RAYSLAPTOP\RAY	QW50	CHECKIN	6545	CHECKIN
2009-07-17	11:03:07	0	207.164.39.216	\\RAYSLAPTOP\RAY	QW50	DISCONNECT	6545	DISCONNECT

Repeat the above steps for each workstation that you want to connect to QW License Server.

Now that you have QWLicenseServer running as a Windows Service, you can further configure the service by going into Control Panel and clicking on the Services icon. You can then ensure that the service is set to Automatic mode and that the proper security settings have been specified if needed. Since it runs as a Windows Service, QWLicenseServer will be available to process requests even if a user is not logged into the server.

## Automating Licensing

On the client side, if a file with the same name as the client application, with an extension of '.LIC' exists in the same folder as the client application, it will be loaded the first time the client application is executed and the contents of the file applied to the registry.

ie If the file c:\Busitech\QW50\QW.LIC existed and had the following content:

**[QWLICENSE]**

**LicenseNo = 192.168.0.4:5555**

**RegName1 = Busitech**

**RegName2 = Ray St.Denis**

Then the registry would be updated to point to this server and port number, and the file would subsequently be deleted. This can make the transition from Standalone to Server licensing a simple process, as well as transitioning from one license server to another.

## Support

Any questions concerning Quality Window License Server may be directed to **Busitech** at (613) 938-0900 or via email: [support@busitech.com](mailto:support@busitech.com)