

# Quality Window License Server Installation Guide

Build 204

## Introduction

Quality Window 5.0 can be licensed in two ways: Standalone License or Server License

In Standalone License mode, a single workstation is assigned a unique license with unlimited use. In Server License mode, a server with QWLicenseServer installed is assigned a special license with an encoded number of seats, and each workstation configured to communicate with the server is allocated a seat based on the number of concurrent seats already allocated. In other words, a 10 seat license means that at most, 10 workstations can communicate to the server at any one time. *It is highly recommended that mission critical workstations be allocated standalone licenses to be guaranteed usage of the software when they need it or make use of the license reservation feature described later in this document.*

## Requirements

Quality Window License Server must be installed on a workstation or server with a Static IP address with at least 1 unused TCP port. The software will run on all Microsoft operating systems from Windows 7 onward including 32bit and 64bit architectures. There is very little demand on memory, CPU and disk space when QW License Server is running, however network TCP traffic can be demanding with a high number of concurrent users checking-in (larger than 100 users). The software is usually installed on an existing server that may be providing other services such as a file server or web server.

## Installation

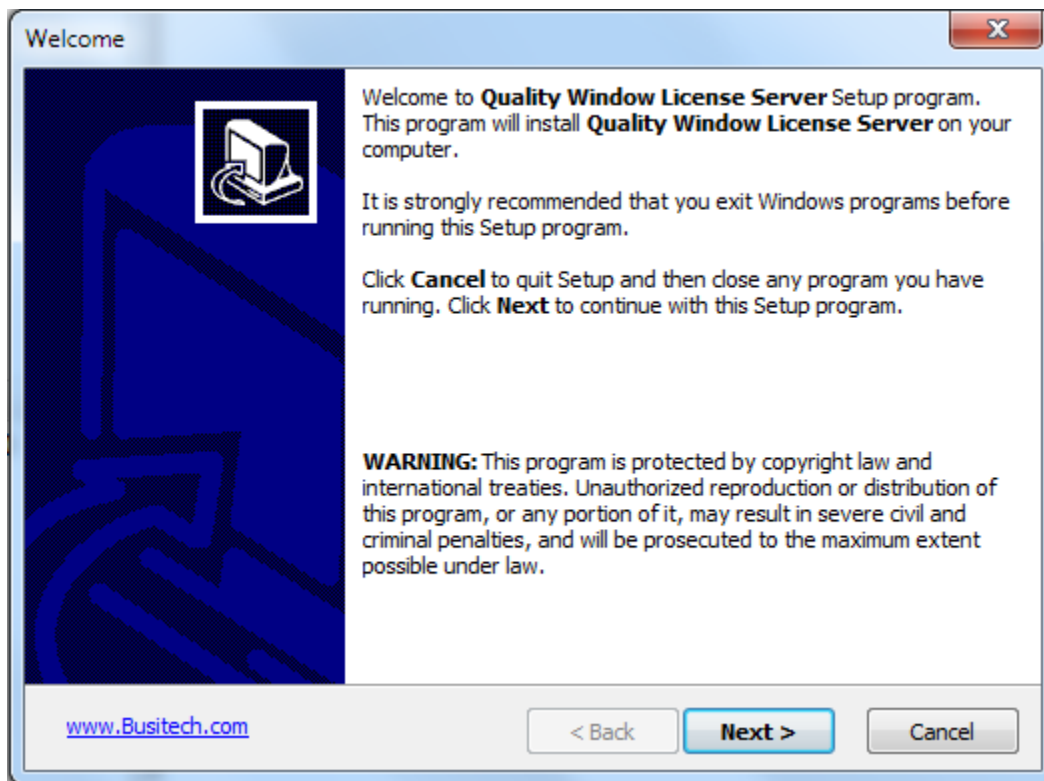
Download and run the following installation package:

<http://assets.busitech.com/software/QWLicenseServer/QWLicenseServer500204Install.exe>

The following screen should appear:

# Quality Window License Server Installation Guide

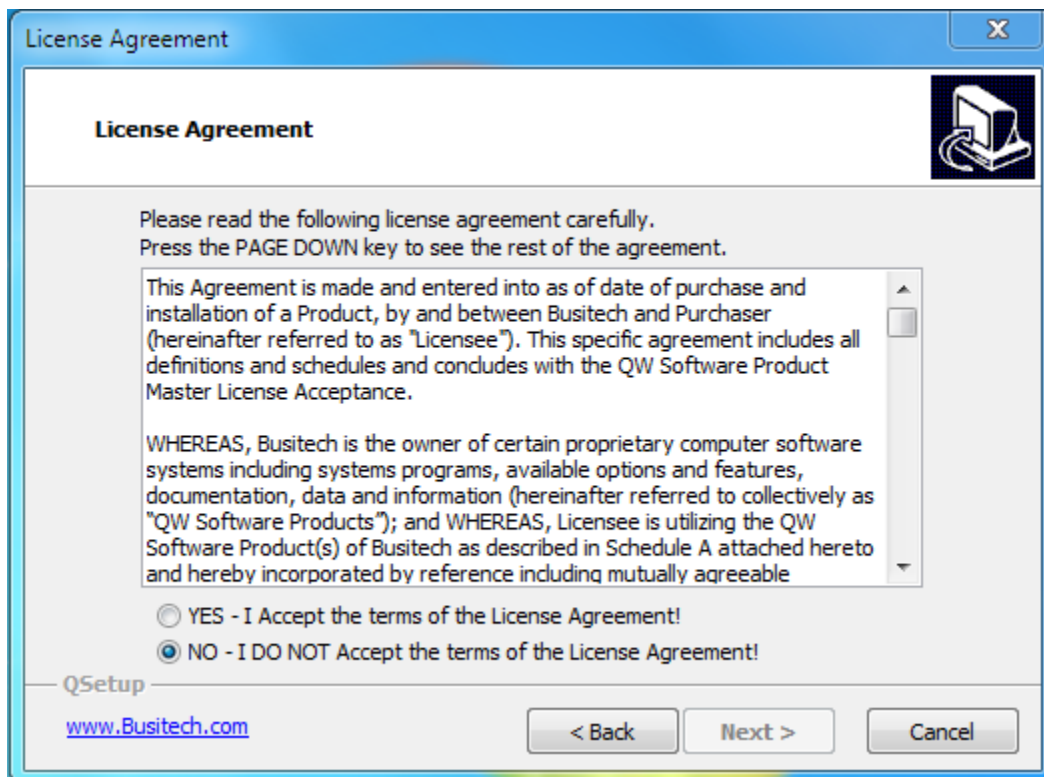
Build 204



Now click **Next**.

# Quality Window License Server Installation Guide

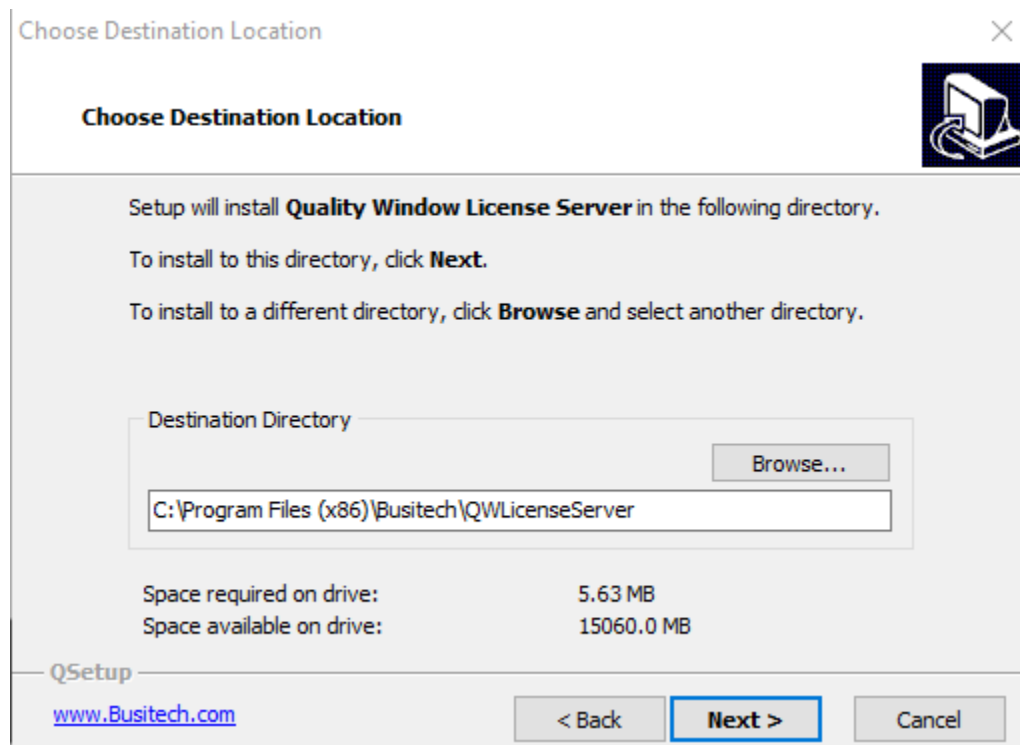
Build 204



Review the license agreement and choose whether to accept the terms. Click "Next".

# Quality Window License Server Installation Guide

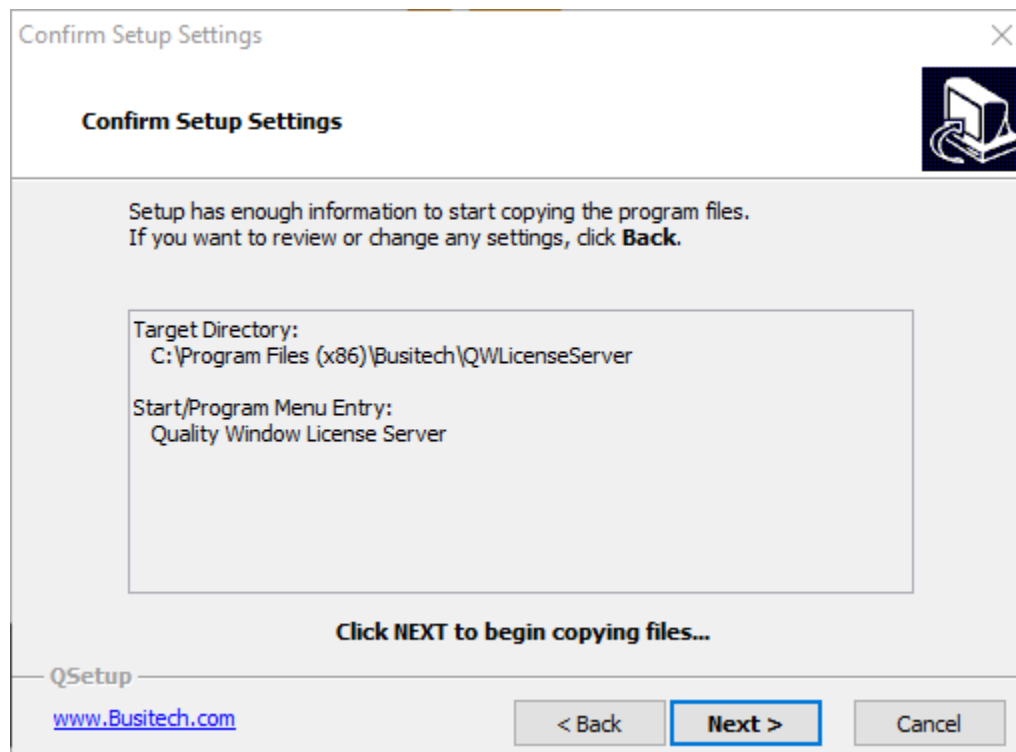
Build 204



At this point, either change the destination folder or leave it as default, and then click **Next**.

# Quality Window License Server Installation Guide

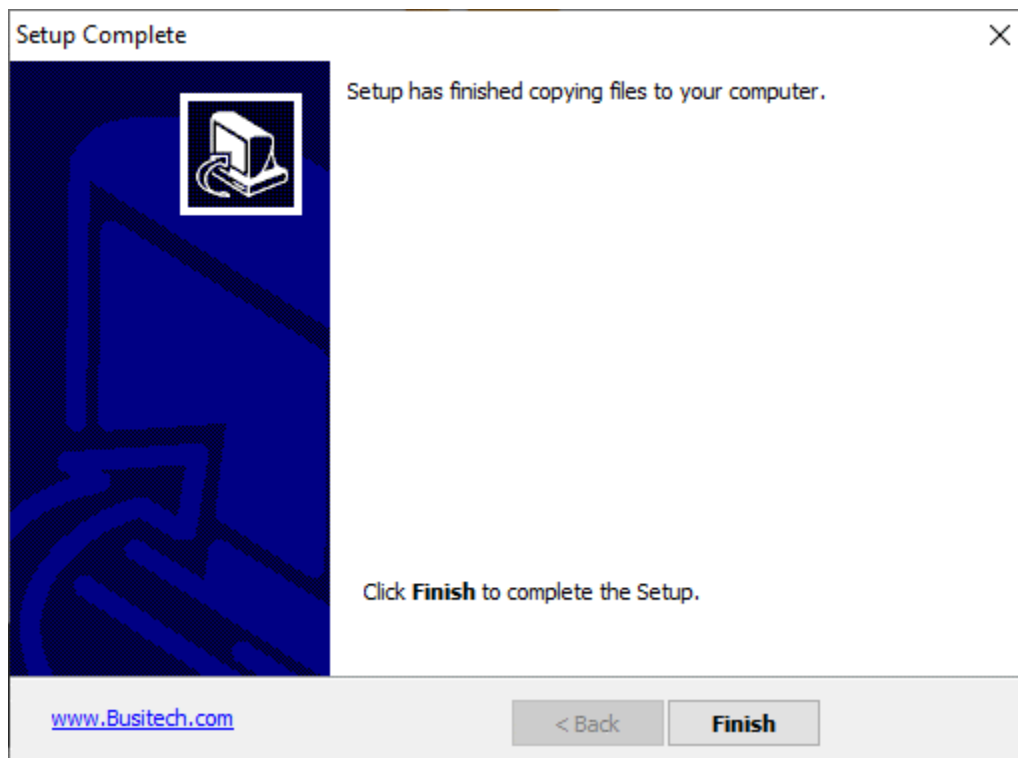
Build 204



Click **Next** to start copying files.

# Quality Window License Server Installation Guide

Build 204



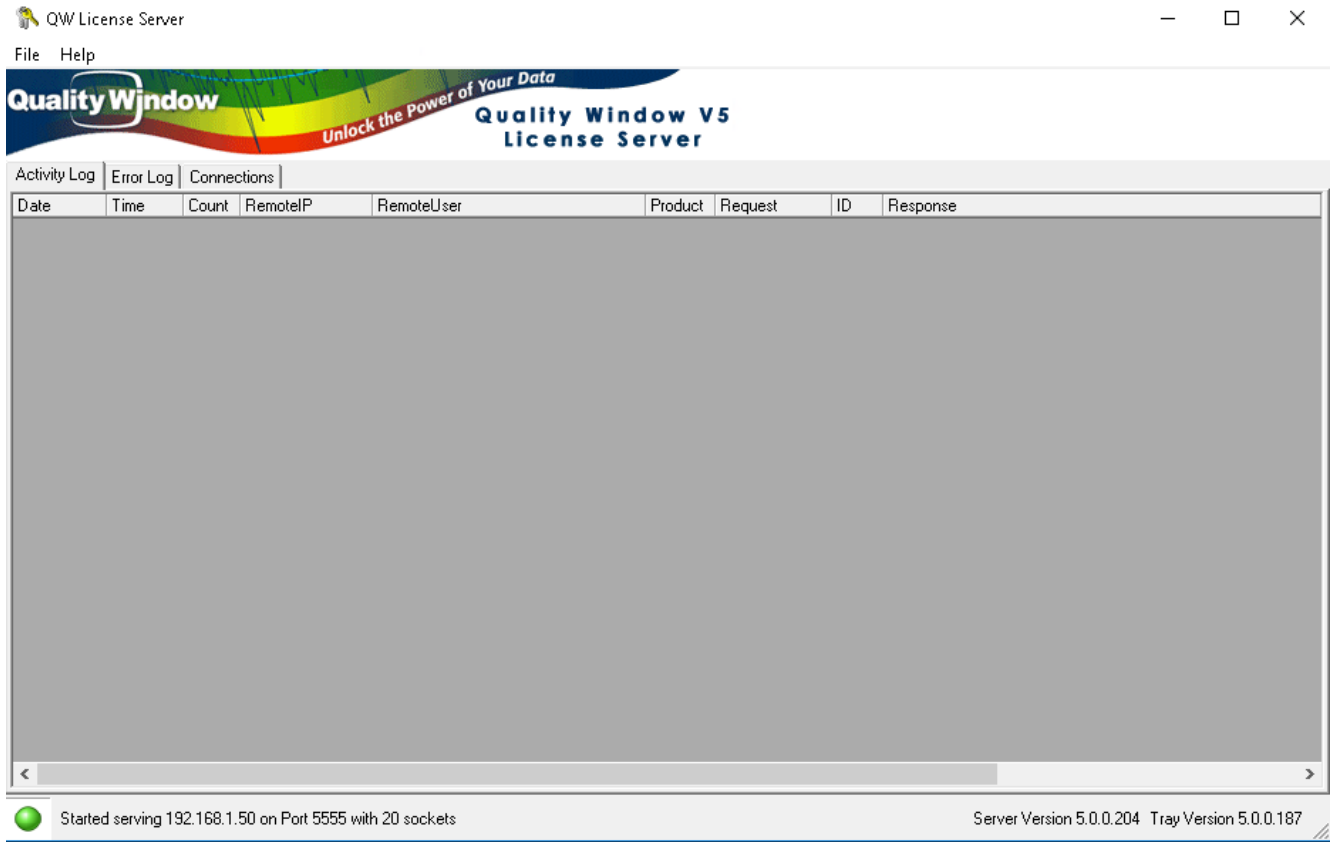
QWLicenseServer has now been installed. Click on **Finish** to start QWLicenseServer.

Note the KeyChain icon in the System Tray – Right-click on this icon to Start/Stop the Windows service, or to enter the Administration module for QWLicenseServer.

If you Left-click on the icon, a log window such as this will be displayed:

# Quality Window License Server Installation Guide

Build 204

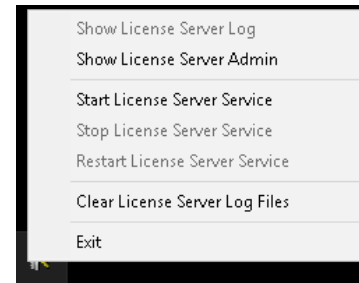


For each access to QWLicenseServer, an entry would be displayed in this window. Make note of the status bar where it says: **Serving 192.168.1.55 on Port 5555**. This is the current workstation IP address that the server is configured for as well as the TCP Port we will specify later in the administration program. These settings will be required when we configure the workstations.

# Quality Window License Server Installation Guide

Build 204

At this point you have no Products defined for QWLicenseServer. Right-click on the Keys Icon in the System Tray and select **Show License Server Admin**.





# Quality Window License Server Installation Guide

Build 204

For the **Local IP Address**, you can leave this blank and QWLicenseServer will use the IP address associated with the first interface card it finds. If you have multiple interface cards and you want to have QWLicenseServer listen on a specific IP address, then enter the IP address here.

Choose a **TCP Port** that you know is not currently being used on this server (Default 5555)

**Allow Duplicates** if selected, means that if a workstation runs multiple instances of a program, that only 1 seat should be allocated for all instances. If not selected, then each instance will consume a seat.

**Inactive Connections** is the number of seconds that an ID has not checked in, to release the seat. The default of 600 seconds (10 minutes) is usually fine.

**Max on Screen Log** is the maximum number of log records to display in the Log Window. Note that ALL log records are written to the log files if a log file was specified.

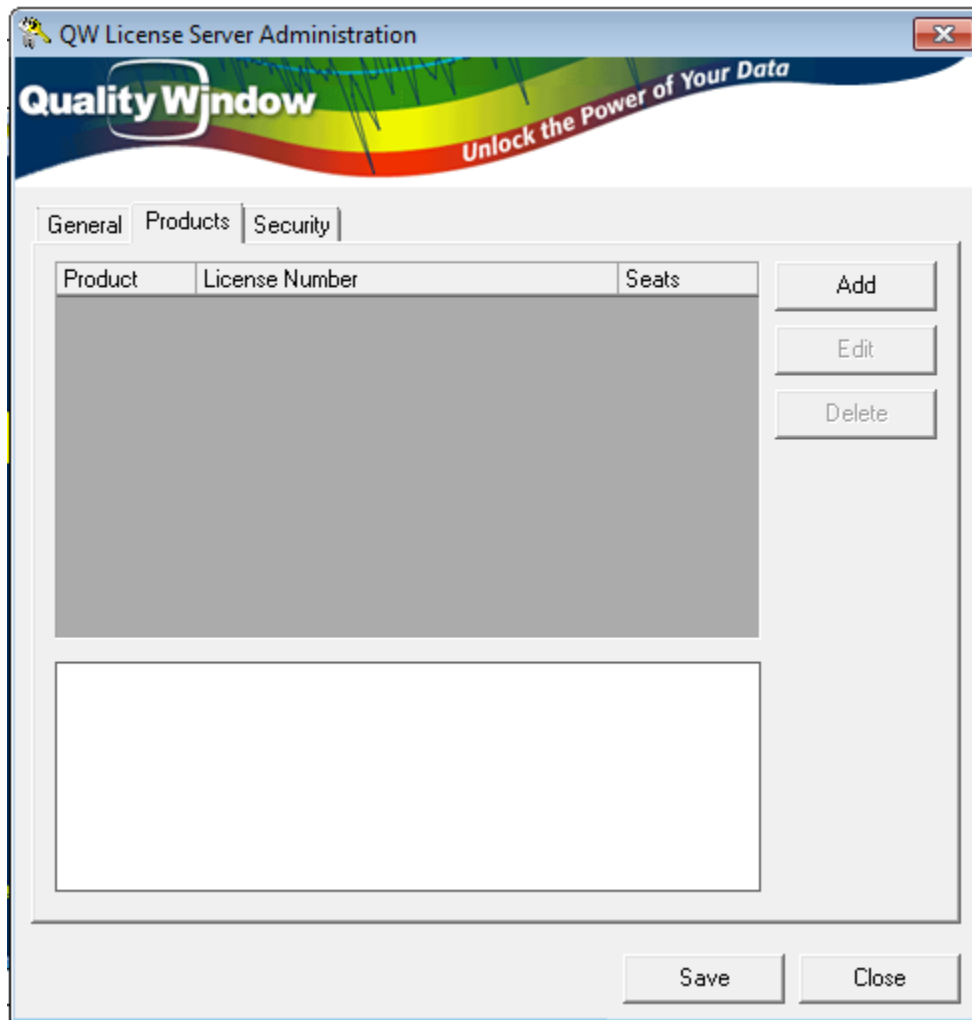
**Log to Quality Window** (if specified) allows you to output log entries to a Quality Window application. Please note that Quality Window 5 must be installed on the same computer as the license server to use this feature.

**Log to Comma Separated File** (if specified) allows you to output log entries to a CSV file which can later be imported into Excel.

Now click on the **Products** tab to create a new product.

# Quality Window License Server Installation Guide

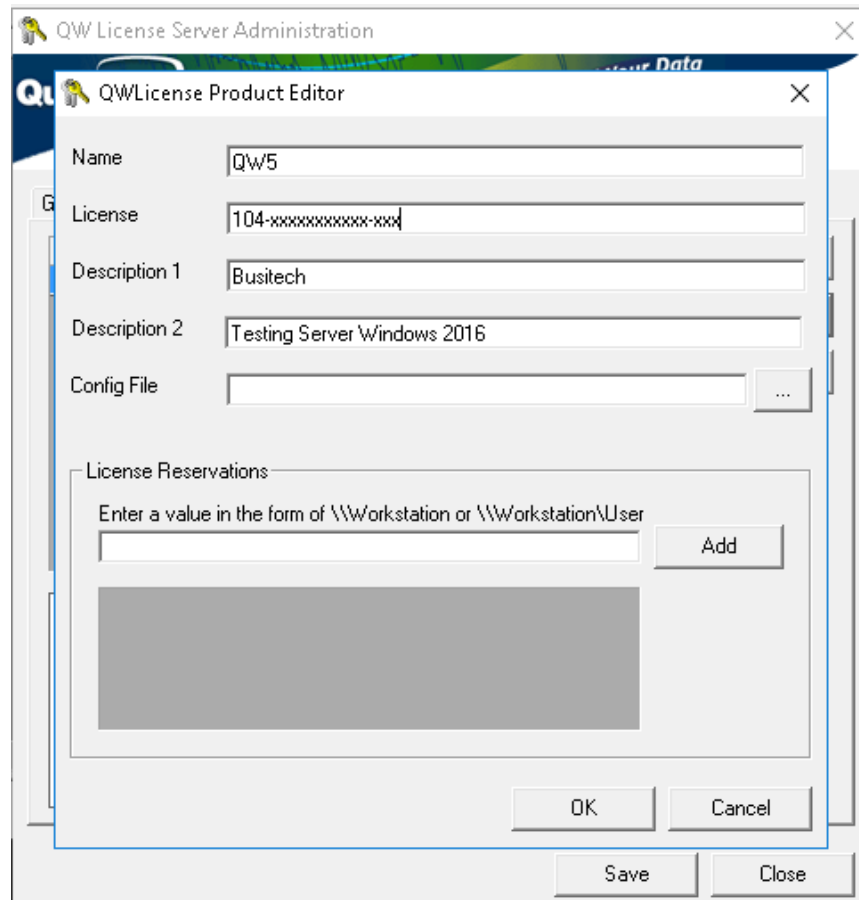
Build 204



# Quality Window License Server Installation Guide

Build 204

Now click **Add** to add a new product.



Enter the Product Name (ie if using Quality Window 5.0, then enter **QW50**)

Enter the License number that was given to you in the exact format including hyphens.

Enter both Descriptions to document the product or company name.

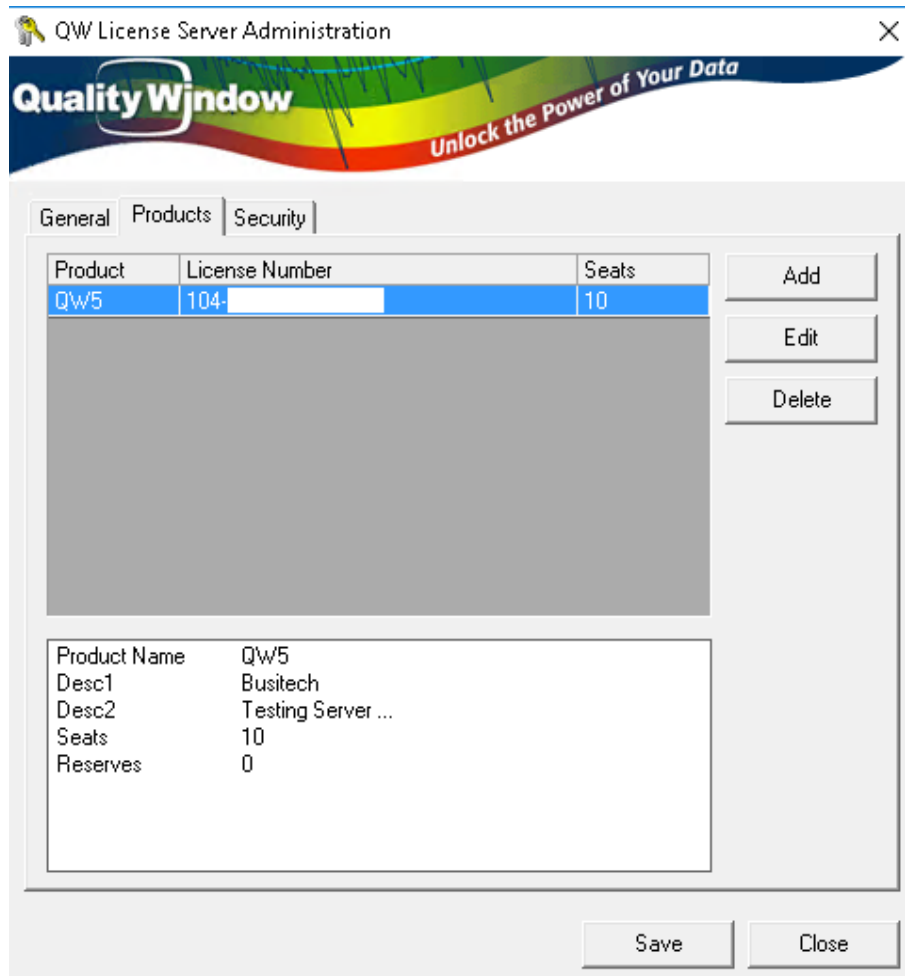
License Reservations is a feature that will guarantee seats to the listed workstations or workstation users. Use this feature to ensure mission critical workstations and workstation users will always obtain a seat when Quality Window is started. Please note that using the feature will reduce the total number of concurrent seats by the total number of reservations. Alternatively, mission critical workstations can be assigned a stand-alone license separate from the license server. This would require a separate license number purchased from Busitech and the workstations would no longer participate with the license server.

Now press **Ok**.

# Quality Window License Server Installation Guide

Build 204

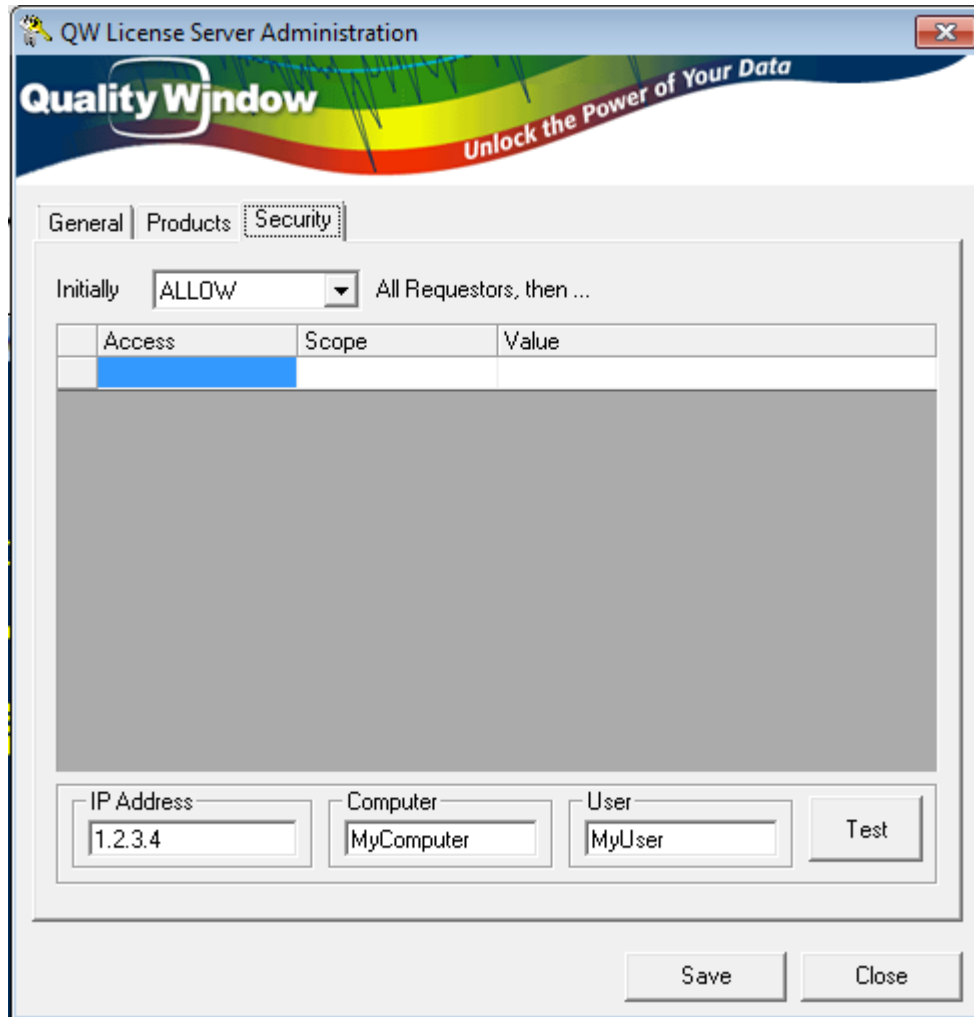
You have just registered your first concurrent server license number.



# Quality Window License Server Installation Guide

Build 204

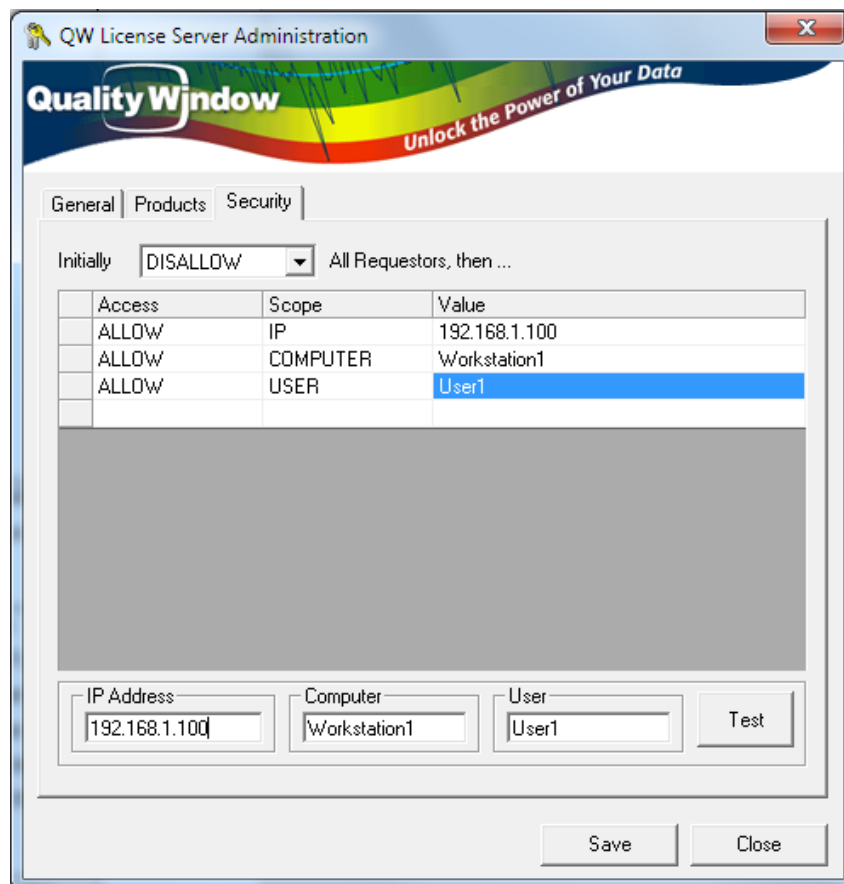
Now that you have your product set up, you can define some Security rules. Click on the **Security** tab on the left.



QWLicenseServer can be configured to allow or refuse external requests based on the user’s IP address, his Computer name, or his logon User name. The first drop-down box defines whether you want to initially ALLOW all requestors, or initially DISALLOW all requestors. Set the appropriate value and continue on to the grid below.

# Quality Window License Server Installation Guide

Build 204



The security grid is broken into 3 parameters, where the first column defines the access rule of Allow or Disallow, then second column defines the scope which could be by IP address, Computer name, or by Username. The third column defines that actual value to test against.

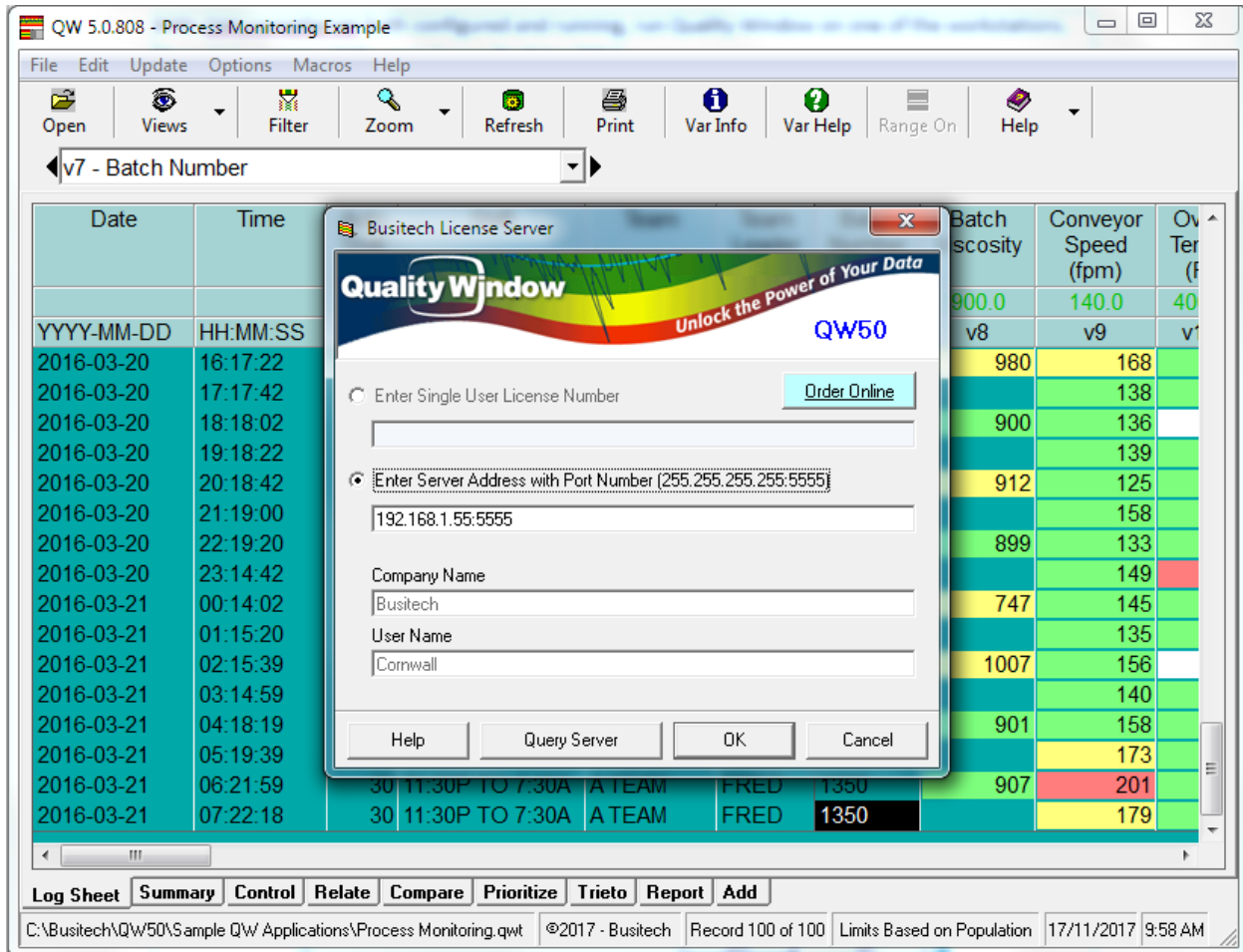
In the example above, all requestors are initially disallowed, but if request came from IP address 192.168.1.100 then allow it. Then it would check if the Computer name was Workstation1 and if so Allow it. Then it would check if the username was User1, and if so Allow it. Note that you can use the testing area below the grid to enter example requests and click on the Test button to determine if that scenario would be allowed or not. The system basically validates the request top-down in the list to determine if the request should be allowed or not. Note that a '0' specified as one of the IP sub-addresses means to use it as a wildcard (eg 192.168.1.0 would correspond to all addresses from 192.168.1.0 through 192.168.1.255).

Now click on **Save** and then **Close**. You will get a message stating that changes will not take effect until you restart the License Server program. Using the Tray icon, Stop QWLicenseServer and then restart it.

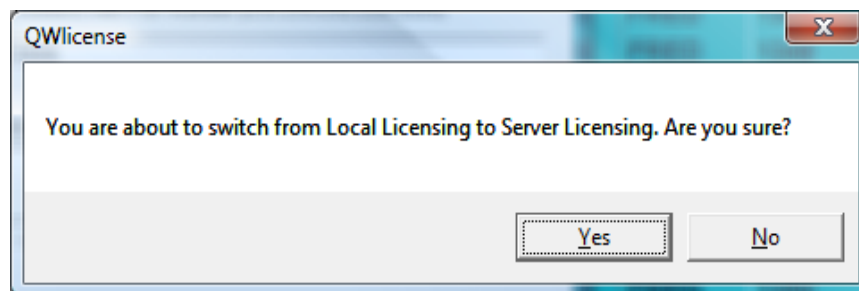
# Quality Window License Server Installation Guide

Build 204

With QWLicenseServer both configured and running, run Quality Window on one of the workstations. Then click on menu **Help**, and choose **Register QW 5**.



Click on the Server Address radio button and enter the IP address of the server, a colon, followed by the TCP Port configured on the server. Now click on the **Ok** button. A warning message appears to remind you that you will be switching to Server Licensing – click **Yes** to confirm.



# Quality Window License Server Installation Guide

Build 204

Note that if you have a DNS name defined for the Server's IP address, you can enter the DNS name instead of the IP address in Quality Window. For example, if you have MyLicenseServer.Domain.com in DNS associated with the address 192.168.1.55, then in Quality Window you could enter:

**MyLicenseServer.Domain.com:5555**

This way, if you choose to change the IP address of the server, your administrator only needs to change the DNS entry and all Quality Window users will automatically point to the new IP address.

Repeat the above steps for each workstation that you want to connect to QW License Server.

Now that you have QWLicenseServer running as a Windows Service, you can further configure the service by going into Control Panel and clicking on the Services icon. You can then ensure that the service is set to Automatic mode and that the proper security settings have been specified if needed. Since it runs as a Windows Service, QWLicenseServer will be available to process requests even if a user is not logged into the server.

## Automating Licensing

On the client side, if a file with the same name as the client application, with an extension of '.LIC' exists in the same folder as the client application, it will be loaded the first time the client application is executed and the contents of the file applied to the product registration. The file will be automatically deleted after registration has applied.

The LIC file should be in the following format and saved as an ASCII text file.

**[QWLICENSE]**

**LicenseNo = 192.168.1.55:5555**

**RegName1 = Company**

**RegName2 = User**

## Support

Any questions concerning Quality Window License Server may be directed to **Busitech** at (613) 938-0900 or via email: [support@busitech.com](mailto:support@busitech.com)